



Price

£2,250 PCM

Fees Apply



Available 15/06/26

OPEN HOUSE FULLY
BOOKED, Havelock
Road, BN1

cubitt & west
Helping you move forwards



Main Features

OPEN HOUSE FULLY BOOKED!

Semi-detached

3 double bedroom plus loft room

2 bathroom plus separate WC

Front and rear gardens

Available now



Deposit required is £2,596.15

The City of Brighton and Hove - Council Tax Band Tax Band E

Renting a property is a big commitment and we recommend that you visit the local authority website and these websites which offer helpful information and advice about letting

www.gov.uk/government/publications/how-to-rent

www.gov.uk/private-renting

www.cubittandwest.co.uk/renting/tenancy-fees-individuals/

www.gov.uk/green-deal-energy-saving-measures

Call Brighton 01273 747525 ■ cubittandwest.co.uk

IMPORTANT INFORMATION: Please contact our Lettings Team who will confirm the total costs involved in renting this property. For clarification, we wish to inform the prospective tenant that we have prepared these details as a general guide. The agent has not carried out a detailed survey nor tested the services, appliances, or specific fittings (unless otherwise stated), and no warranty can be given as to their condition. All room measurements are taken at floor level. We strongly recommend that all the information which we provide about the property is verified by yourself and your advisers. The contents of this publication are © Cubitt & West, 2015. Cubitt & West is a trading name of Arun Estates Limited Registered in England No. 2597969

Accommodation

Reception 7.40 x 3.71

Kitchen/Diner 8.94 x 2.69

Hallway

WC

Bedroom 1 2.45 x 4.22

En Suite

Bedroom 2 3.64 x 2.99

Bedroom 3 3.28 x 2.75

Bathroom

Loft Room/Bedroom 4 4.26 x 3.77

Landing

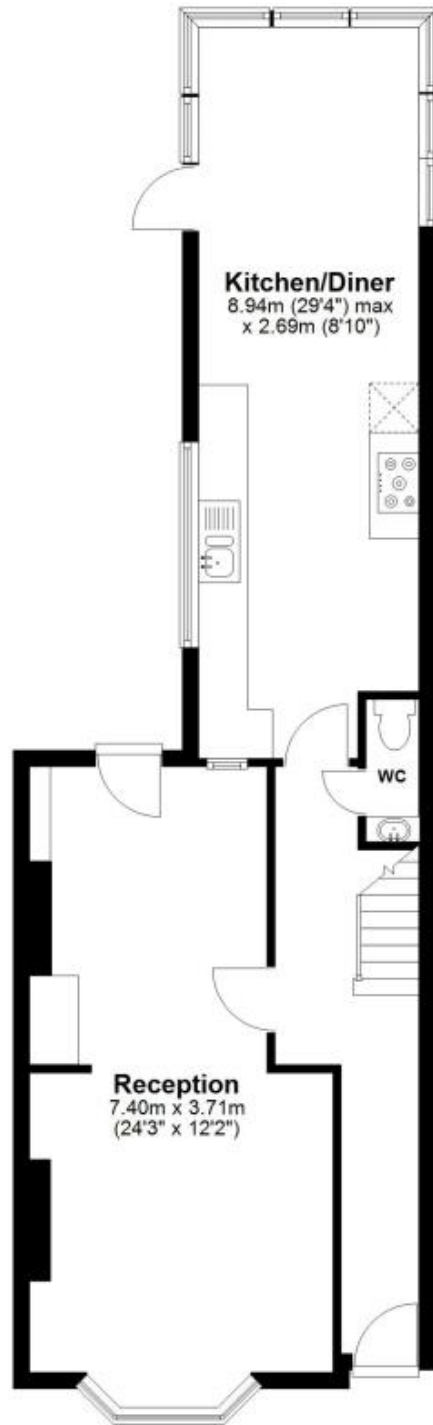
Rear Garden

Street Permit Parking



Ground Floor

Approx. 59.6 sq. metres (641.0 sq. feet)



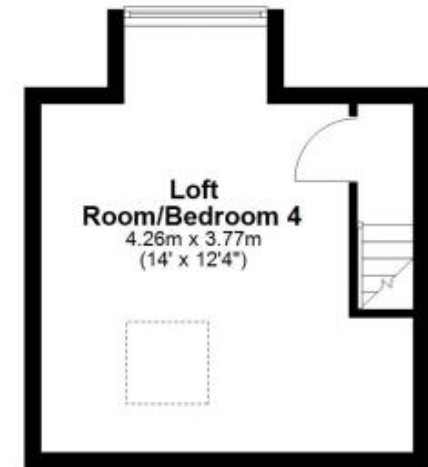
First Floor

Approx. 50.1 sq. metres (539.7 sq. feet)



Second Floor

Approx. 20.4 sq. metres (219.2 sq. feet)



Total area: approx. 130.1 sq. metres (1399.9 sq. feet)