



Guide Price
£475,000

Freehold

4x  2x  1x 

**Seaton Road, Welling,
Kent, DA16**

OVER 60?

Secure this property
for up to **59% less!**

Wards
Helping you move forwards



Main features

- Upstairs bathroom and downstairs shower room
- Large conservatory
- Potential to extend subject to planning permission
- Close to several transport links and sought after schools
- Good sized rear garden

Accommodation

GROUND FLOOR

Entrance Hall

Lounge: 13'7 x 12'7 (4.14m x 3.84m)

Dining Area: 13'7 x 13'0 (4.14m x 3.97m)

Kitchen: 11'9 x 8'7 (3.58m x 2.62m)

Conservatory: 17'5 x 11'2 (5.31m x 3.41m)

Shower Room

FIRST FLOOR

Landing

Bathroom

Bedroom 1: 12'5 x 11'2 (3.79m x 3.41m)

Bedroom 2: 17'1 x 6'5 (5.21m x 1.96m)

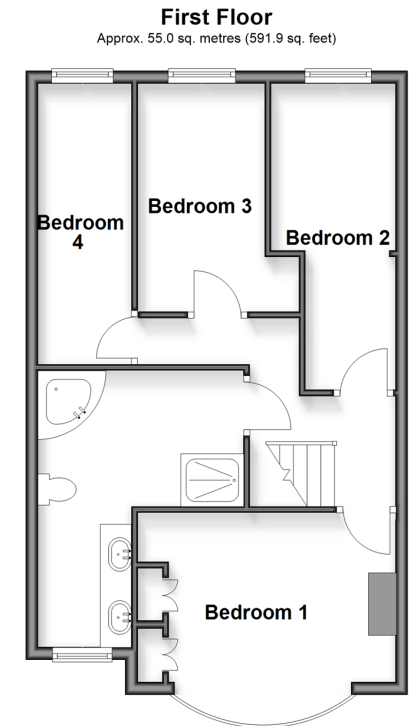
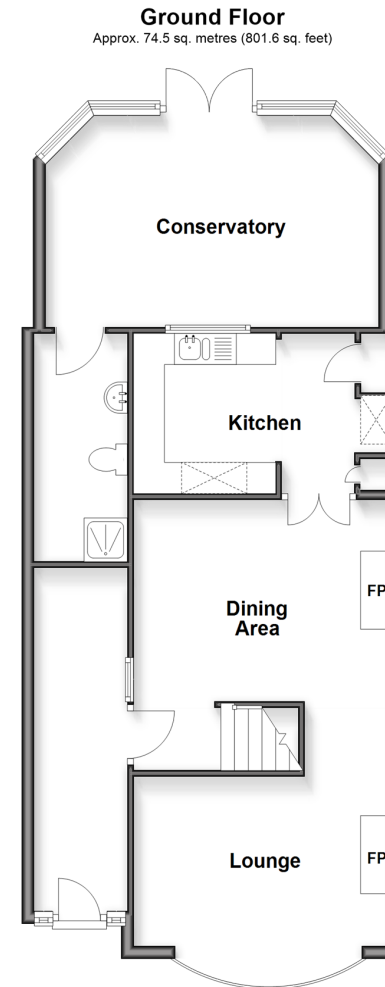
Bedroom 3: 12'5 x 6'8 (3.79m x 2.03m)

Bedroom 4: 15'4 x 4'9 (4.68m x 1.45m)

OUTSIDE

Driveway

Rear Garden



Call Welling - 020 8301 6679 ■ wardsofkent.co.uk

■ Through a Homewise Home For Life Plan people aged 60+ can secure this property for up to 59% less, by purchasing a Lifetime Lease



15009468/20260321/RL/LK