



8 Ripple Walk, Brimington, Chesterfield, S41 0UN

Guide Price £375,000

- Generous plot with off street parking for multiple vehicles
- Modern property with kitchen diner
- 4 Double bedrooms with a Master bedroom with ensuite shower room
- Guide price £375,000 - £385,000
- Utility room and downstairs wc
- Still under NHBC warrantee
- Well presented and maintained throughout
- Enclosed rear garden area with patio seating and lawn
- Large garage with potential for partial or full conversion into a gym/playroom/home office etc
- Ideal family home with good transport links



Ripple Walk, S41

DETAILS
Total area: 1306.78 sq ft

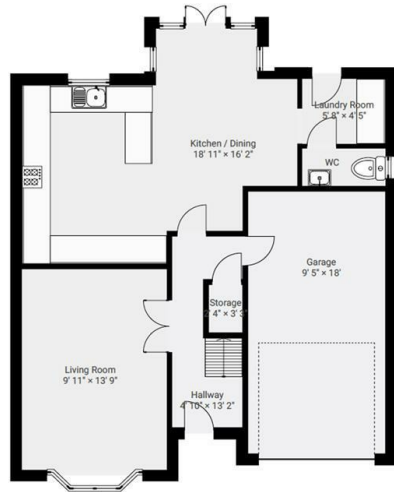
Square Box Media
info@squareboxmedia.com
www.squareboxmedia.com

This floorplan is provided without any warranty. The actual size of dimensions may vary and this floorplan is intended for illustrative purposes only.



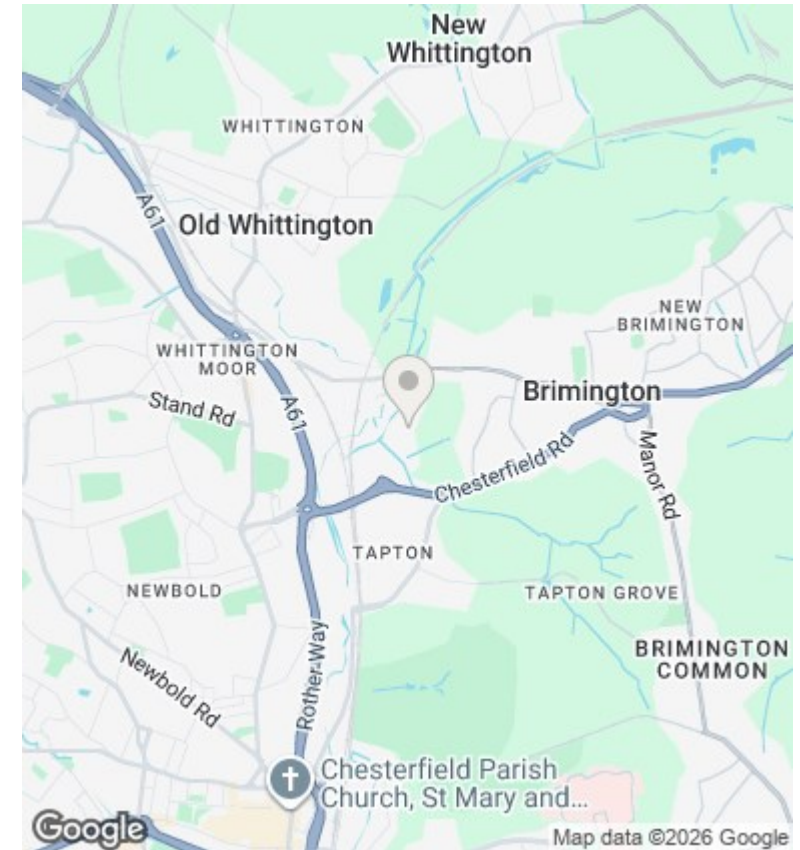
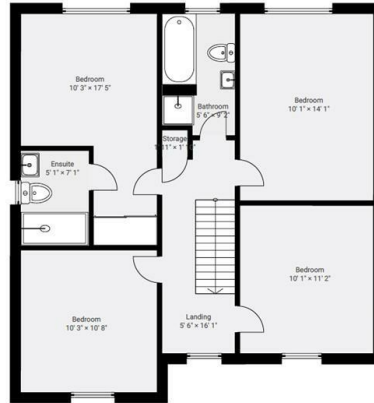
▼ Ground Floor

TOTAL AREA: 634.32 sq ft



▼ 1st Floor

TOTAL AREA: 672.45 sq ft



Directions

Viewings

Viewings by arrangement only. Call 01246 276 276 to make an appointment.

Council Tax Band

A

EPC Rating:

B

Energy Efficiency Rating		
	Current	Potential
Very energy efficient - lower running costs		
(92 plus) A		93
(81-91) B	84	
(69-80) C		
(55-68) D		
(39-54) E		
(21-38) F		
(1-20) G		
Not energy efficient - higher running costs		
England & Wales	EU Directive 2002/91/EC	