



## Eustace Road, SW6

£1,395,000

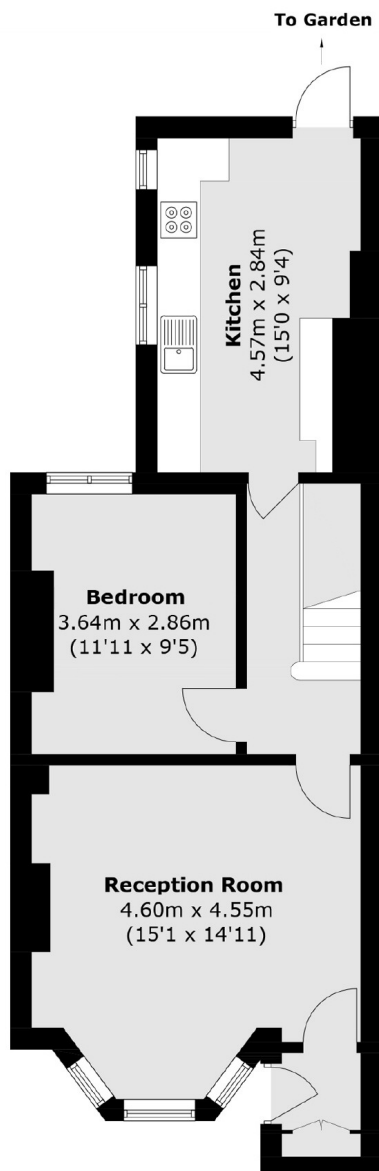
A beautifully updated freehold house situated on a quiet residential street between Fulham Broadway and West Brompton. Spread across three floors, this spacious home offers two reception rooms and a bright kitchen dining area that opens directly onto a private garden.

Situated on a sought-after tree-lined street located within close proximity to the transport links and amenities of Fulham Broadway, West Brompton and Parsons Green.

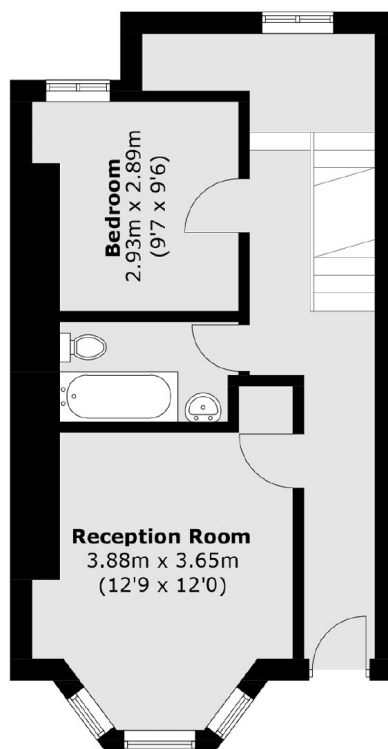
### Features

- Four Double Bedrooms
- Private Garden
- Two Entrances
- Freehold House
- Spanning Over 1,400 Sq. Ft
- Two Reception Rooms

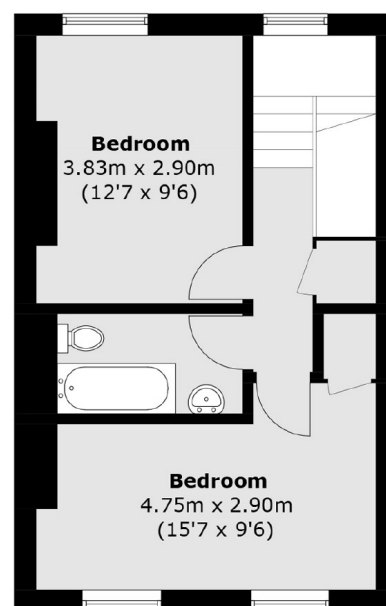
# Eustace Road, London, SW6



**Lower Ground Floor**



**Raised Ground Floor**



**First Floor**

Total area (approx.): 132.1 sq. m (1,421.8 sq. ft)