



115 Church Lane, Cantley, DN4

Offers in the Region of **£140,000**



Bedrooms: 3

Bathrooms: 1

Receptions: 1

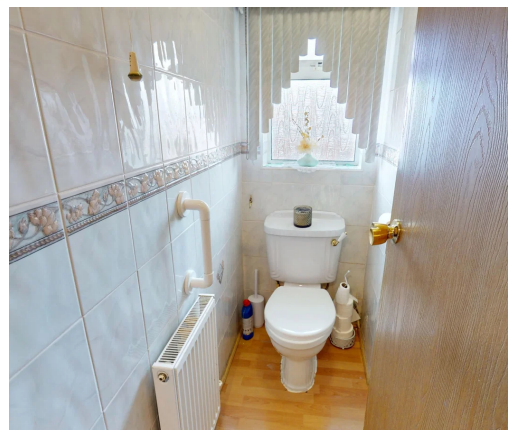
Located on Church Lane in the popular suburb of Cantley, this three-bedroom home offers well-kept accommodation across two floors with good-sized rooms, established gardens, and plenty of potential for a new owner to make it their own.

Living Room

Situated at the front of the property, the living and dining room is bright and spacious, with a large window overlooking the front garden. A feature fireplace creates a focal point to the room, while neutral décor and carpeted flooring give the space a comfortable feel. There is enough room for both lounge furniture and a dining table.

Kitchen

The kitchen is positioned at the rear of the property and fitted with white wall and base units, dark worktops, tiled walls, and slate-effect flooring. There is good cupboard and worktop space along with integrated appliances and room for additional freestanding appliances. The kitchen also enjoys views over the rear garden.



Bedrooms

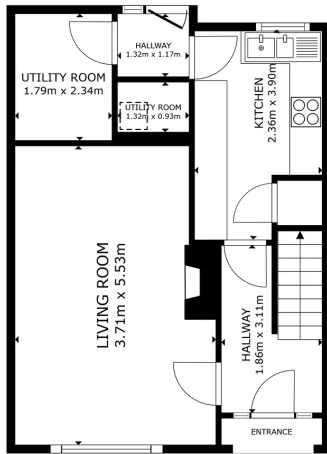
Upstairs are three bedrooms. The main bedroom is a generous double room with fitted wardrobes and overhead storage. The second bedroom is another good-sized room with fitted storage and neutral finishes. The third bedroom is a single room that would also suit use as a nursery, dressing room, or home office.

Bathroom

The bathroom is fully tiled and fitted with a bath, overhead shower, wash basin, and WC. A frosted window provides natural light and ventilation.

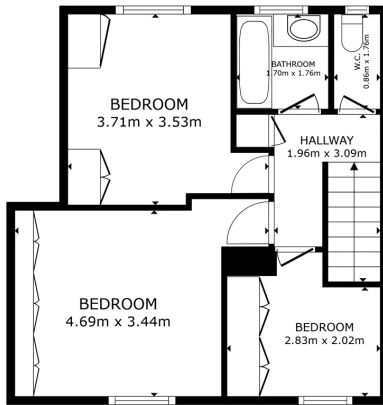
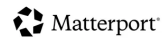
Garden





FLOOR 1

GROSS INTERNAL AREA
 FLOOR 1 44.5 m² FLOOR 2 44.2 m²
 TOTAL: 88.7 m²
 SIZES AND DIMENSIONS ARE APPROXIMATE, ACTUAL MAY VARY.



FLOOR 2

GROSS INTERNAL AREA
 FLOOR 1 44.5 m² FLOOR 2 44.2 m²
 TOTAL: 88.7 m²
 SIZES AND DIMENSIONS ARE APPROXIMATE, ACTUAL MAY VARY.



elitepg.co.uk
 01302 981149