

Rathbone Street, W1T

£650 Per week

This modern one bedroom apartment is conveniently located in the heart of Fitzrovia with close proximity to Tottenham Court Road and Goodge Street station. The apartment is extremely bright with wooden floors throughout the property as well as generous storage space.

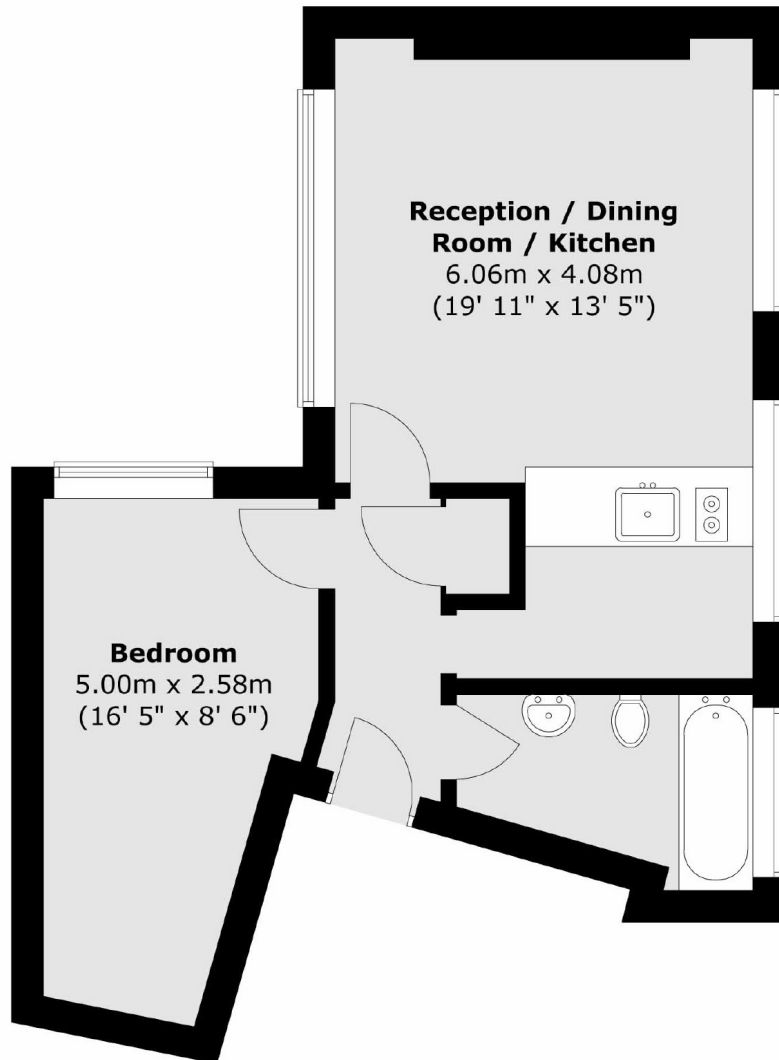
Rathbone Street runs parallel with Charlotte Street which has a wide variety of restaurants, bars and cafés. Oxford Street is also just a few yards away and the nearest Underground stations are Tottenham Court Road and Goodge Street.

Features

- Central Location
- Wooden Floors Throughout
- Great Storage
- Natural Light
- Open Plan
- Great Transport Links

Rathbone Street, London, W1T

Second Floor



Total area (approx.) : 40.9 sq. m (440 sq. ft)