



Guide Price
£325,000

Freehold

3x  1x  2x 

**Woodlands Road,
Gillingham, Kent, ME7**

OVER 60?

Secure this property
for up to **59% less!**

Wards
Helping you move forwards



Main features

- Beautifully presented 1930's terraced house, ideal family home or first time buy
- Modern kitchen and bathroom
- Gas central heating and double glazing
- Large rear garden
- Small garage and off road parking to the rear (limited access)

Accommodation

GROUND FLOOR

- Entrance Hall
- Lounge: 13'4 into bay x 13'3 (4.07m x 4.04m)
- Dining Room: 11'7 x 11'2 (3.53m x 3.41m)
- Kitchen: 11'4 x 7'7 (3.46m x 2.31m)

FIRST FLOOR

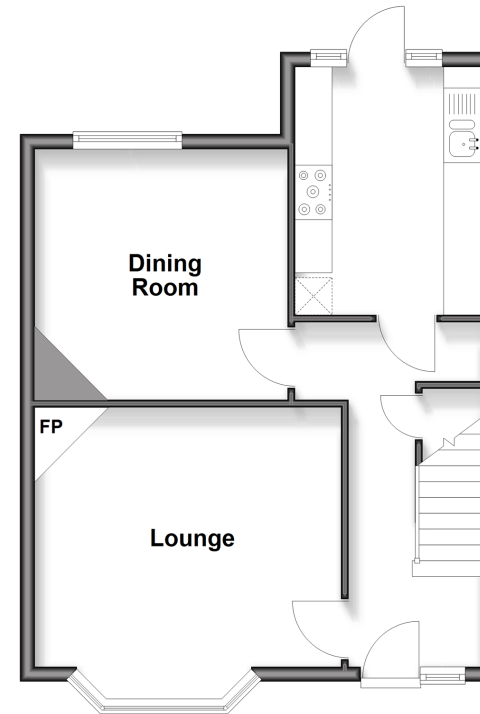
- Landing
- Bedroom 3: 7'9 x 7'6 (2.36m x 2.29m)
- Bedroom 2: 10'6 x 10'6 (3.20m x 3.20m)
- Bedroom 1: 13'4 into bay x 10'7 (4.07m x 3.23m)
- Bathroom

OUTSIDE

- Front Garden
- Rear Garden
- Garage

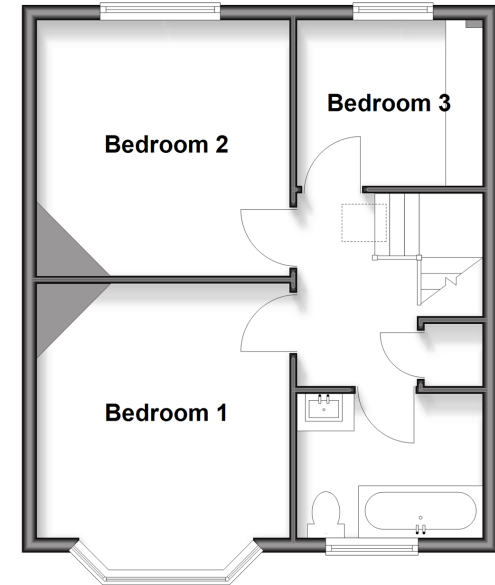
Ground Floor

Approx. 45.1 sq. metres (485.1 sq. feet)



First Floor

Approx. 42.3 sq. metres (455.2 sq. feet)



Call Gillingham - 01634 851191 ■ wardsof Kent.co.uk

■ Legal advice should be taken to verify fixtures/fittings, planning, alterations and/or lease details
 ■ Through a Homewise Home For Life Plan people aged 60+ can secure this property for up to 59% less, by purchasing a Lifetime Lease

■ Appliances & services are untested, dimensions are approximate and floor plans are not to scale



10918942/20260226/ML/GS