

Ben Allman
Estate & Letting Agents



1E Harvey Lane
Thorpe St Andrew, Norwich, NR7 0BG
£1,395



1E Harvey Lane, Thorpe St Andrew, Norwich, NR7 0BG

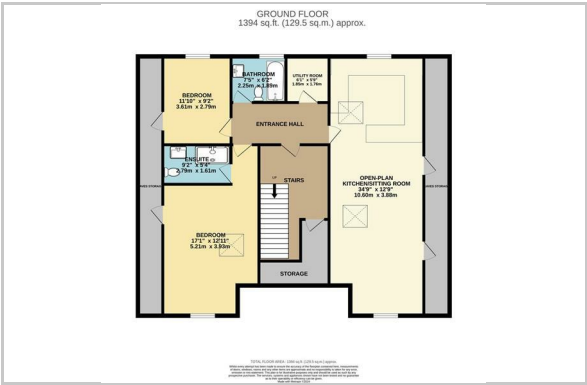
Perched atop a modern complex in the requested suburb of Thorpe St Andrew, this penthouse apartment epitomises contemporary urban living. Boasting over 1000 square feet of internal living space, along with additional external and eaves storage, this residence offers both style and practicality in equal measure.



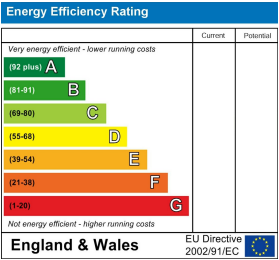
Area Map



Floor Plan



Energy Efficiency Graph



These particulars, whilst believed to be accurate are set out as a general outline only for guidance and do not constitute any part of an offer or contract. Intending purchasers should not rely on them as statements of representation of fact, but must satisfy themselves by inspection or otherwise as to their accuracy. No person in this firms employment has the authority to make or give any representation or warranty in respect of the property.