



Cunnington Street, W4 £400,000

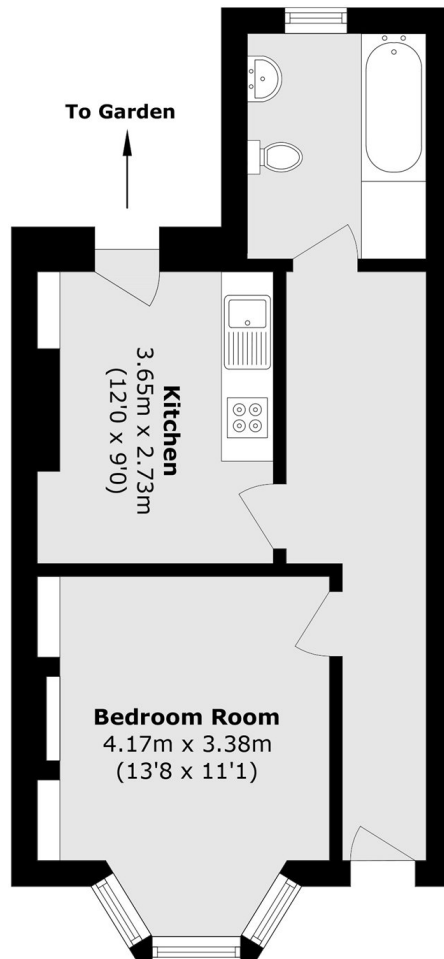
A one bedroom conversion flat. With private west-facing garden, share of freehold, potential to extend (STPP) and no onward chain.

Cunnington Street is moments from Chiswick Park station, near Turnham Green, Acton Green Common, and a short walk from Chiswick High Road's shops, bars, and restaurants.

Features

- One Double Bedroom
- Share Of Freehold
- Private Garden
- Potential To Extend (STPP)
- Close To Transport
- No Onward Chain

Cunnington Street, London, W4



Total area (approx.): 38.3 sq. m (412.2 sq. ft)