



Long Lane, SE1 £400,000

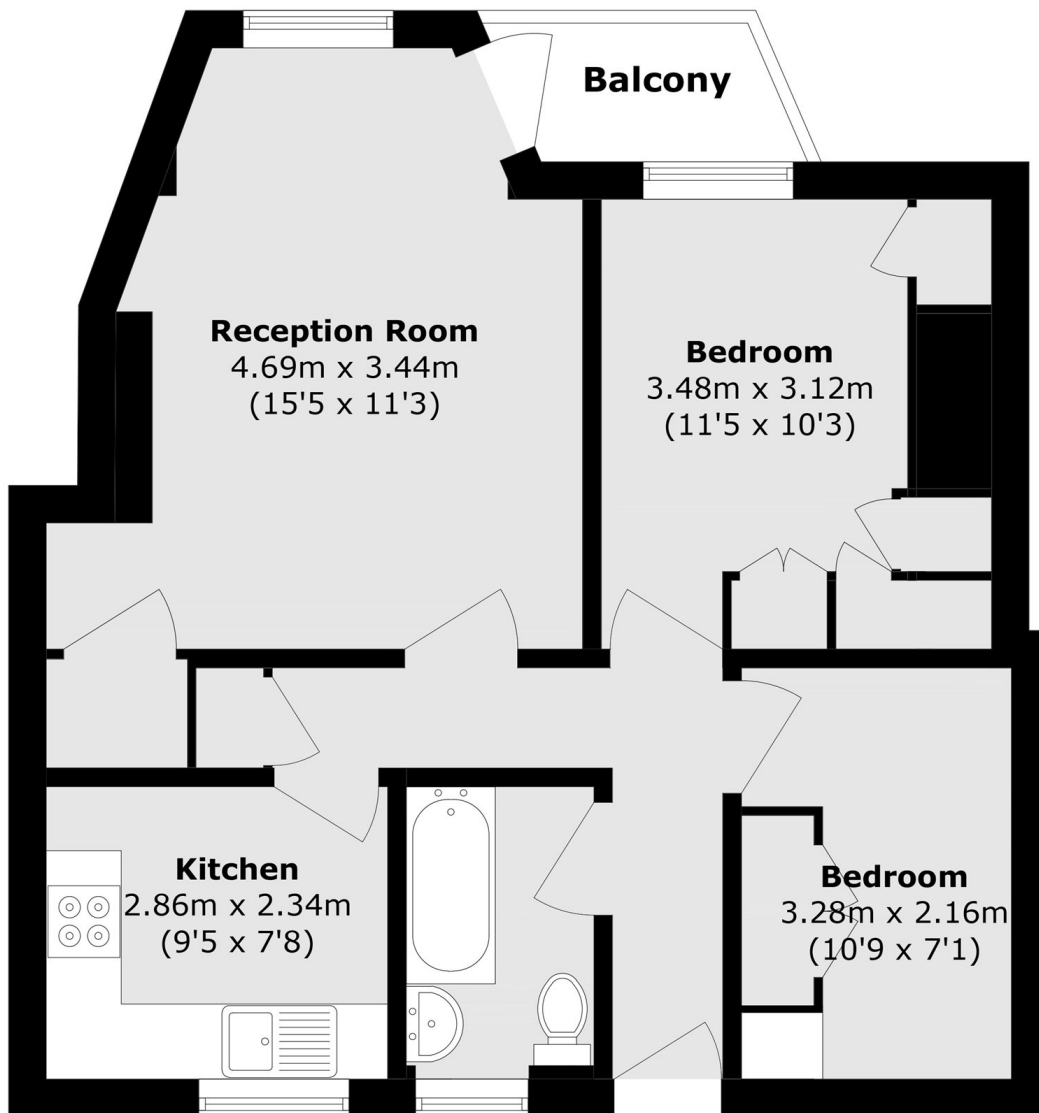
A well-presented third-floor flat offering bright and spacious accommodation throughout, including a generous reception room and a stylish refurbished kitchen. The property further benefits from a private south-facing balcony, two double bedrooms, and a contemporary three-piece family bathroom. Available chain-free and with permit parking. Offers in excess of £400,000.

Tucked away off Bowling Green Place, this apartment enjoys an unbeatable location. You're just a short walk from Borough High Street, the iconic Borough Market, and London Bridge station, offering excellent transport links. A wealth of shops, cafés, and restaurants are on your doorstep, while the vibrant South Bank is just moments away.

Features

- Offers in excess of £400,000
- Very Central Location
- Large Living Room
- Refurbished Modern Kitchen
- Contemporary Bathroom
- Two Double Bedrooms
- Chain Free Sale

Long Lane,
London, SE1



Total area (approx.): 55.0 sq. m (592.0 sq. ft)
Balcony area (approx.): 2.4 sq. m (25.8 sq. ft)