



Guide Price
£300,000

Leasehold

2x  1x  1x 

**Coulsdon Place,
Caterham, Surrey, CR3**

OVER 60?

Secure this property
for up to **59% less!**

cubitt&west
Helping you move forwards



Main features

- Two bedroom first floor maisonette within a quite cul-De-sac
- Double garage and private garden
- Driveway plus further off street parking
- Private loft space for storage
- Located within walking distance of local shops and bus stops

Accommodation

FIRST FLOOR

Entrance Hallway

Lounge: 14'0 x 10'0 (4.27m x 3.05m)

Kitchen: 9'0 x 6'0 (2.75m x 1.83m)

Bedroom 1: 10'0 up to fitted wardrobes x 9'0 (3.05m x 2.75m)

Bedroom 2: 13'0 x 7'10 (3.97m x 2.39m)

Bathroom: 7'0 x 5'0 (2.14m x 1.53m)

OUTSIDE

OUTBUILDING

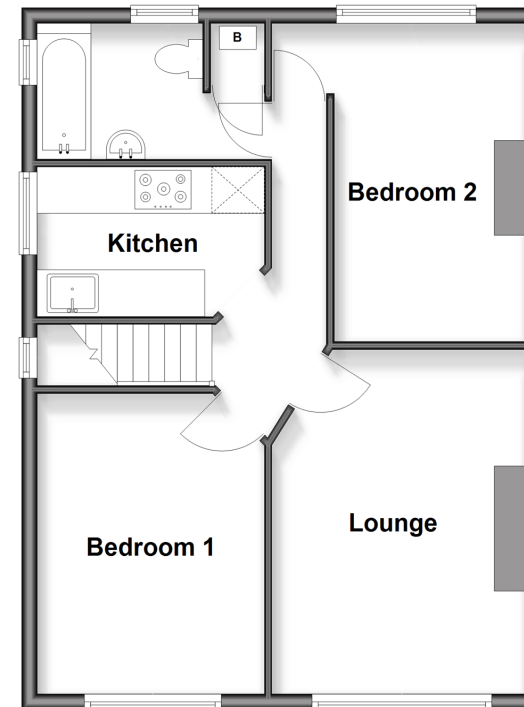
Garage: 26'0 x 10'0 (7.93m x 3.05m)

Driveway

Rear Garden

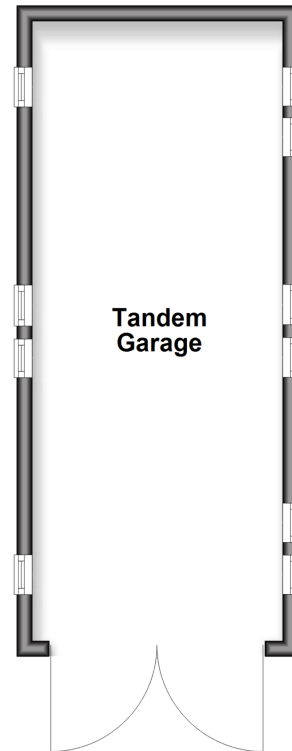
First Floor

Approx. 54.9 sq. metres (590.5 sq. feet)



Outbuilding

Approx. 26.0 sq. metres (279.7 sq. feet)



Call Caterham - 01883 331000 ■ cubittandwest.co.uk

- Legal advice should be taken to verify fixtures/fittings, planning, alterations and/or lease details
- Appliances & services are untested, dimensions are approximate and floor plans are not to scale
- Through a Homewise Home For Life Plan people aged 60+ can secure this property for up to 50% less, by purchasing a Lifetime Lease.



24408102/20251018/JE/LP