



Connells

Warren Field
Ryton On Dunsmore Coventry

Warren Field Ryton On Dunsmore Coventry CV8 3FB

for sale offers over
£400,000



Property Description

Situated in the highly sought after village of Ryton on Dunsmore, this spacious three bedroom semi detached home has been thoughtfully improved by the current owners, offering versatile and well presented accommodation throughout, including a converted loft space and an additional annexe style accommodation.

The ground floor comprises a welcoming entrance hall, a generous lounge, a separate dining room and a well appointed breakfast kitchen, ideal for both everyday living and entertaining.

To the first floor are three well proportioned bedrooms and the family bathroom (updated in 2022). The master bedroom benefits from stairs leading to the converted loft space currently arranged as a walk in wardrobe and study area, providing useful and flexible additional space.

The additional annexe style accommodation offers excellent potential for multi generational living or guest accommodation, featuring its own private entrance, entrance hall, comfortable lounge, a bedroom with fitted wardrobes and a newly fitted ensuite. Offering further potential to add kitchen facilities to create a fully self contained space (subject to planning permissions)

To the rear the property enjoys a generous and private rear garden, ideal for outdoor entertaining or relaxing, while to the front of the property is the driveway providing off road parking for three vehicles.

A fantastic opportunity to acquire a versatile, immaculate home in a desirable village location.

Approach

The property is set back from the road behind the generous driveway providing off road parking for three cars. With a pathway to the front entrance and an additional side entrance to the annexe.

Entrance Hallway

Welcoming entrance hallway with stairs rising

to the first floor, a radiator and doors off to the lounge and dining room.

Lounge

Spacious, light and airy lounge consisting of an electric fire place, a radiator, laminate flooring and a double glazed window to front elevation.

Dining Room

Having an under stairs storage cupboard, a radiator, a double glazed window to front elevation and an archway leading to the breakfast kitchen.

Breakfast Kitchen

Fitted with a range of wall and base units with complementary wood work surfaces over incorporating a sink and drainer unit. There is an integrated Belling electric oven and a five ring gas hob with cooker hood over, whilst providing space for a washing machine, a tumble dryer and a fridge/freezer. Benefiting from a breakfast bar, two radiators, ceiling spotlights, a double glazed window to rear elevation, a door into the annex hallway and French doors leading to the garden.

First Floor Landing

The stairs lead from the hallway. With a double glazed window to rear elevation and doors to all bedrooms and the family bathroom.

Master Bedroom

A good size double bedroom with an under stairs cupboard, a radiator, two double glazed windows to front elevation and stairs rising to

the loft space.

Bedroom Two

Double bedroom having a fitted wardrobe, a radiator and a double glazed window to front elevation,

Bedroom Three

Benefiting from a fitted raised bed with steps, under bed fitted storage with rails, a radiator and a double glazed window to rear elevation.

Bathroom

Updated in 2022 with a modern three piece suite fitted with a wash hand basin, bath with mixer taps and shower over and a low level W/C. Having fully tiled walls, ceiling spotlights, a heated towel rail and a double glazed window to rear elevation.

Second Floor

With stairs from the master bedroom leading to the landing with a skylight to the rear and doors off to the walk in wardrobe space and study area.

Walk In Wardrobe Space

There is fitted rails, fitted storage cupboard, storage into the eaves, and a skylight to rear elevation.

Study Space

Housing the central heating boiler, with a skylight to rear elevation.

Annexe;

Offering its own private entrance to the side of the property into the entrance hallway and offering further potential to add kitchen facilities to create a fully self contained annex.

Hallway

Comprising a radiator, doors into the lounge and kitchen of the main home, a door to the W/C, pantry cupboard, bedroom and French doors to the garden.

W/C

Fitted with a W.C.

Pantry Cupboard

Fitted with wall and base units.

Lounge

Spacious lounge having a radiator, a double glazed window to side elevation and French doors leading to the garden.

Bedroom

Double bedroom benefiting from two built-in wardrobes, two vertical radiators, a double glazed window to side elevation and a door to the lounge.

Bathroom

Newly fitted with a modern, white and grey three piece suite fitted with a wash hand basin with vanity unit, bath with shower over and a low level W/C. Having panelled walls and a fitted towel rail.

Outside

Rear Garden

Beautifully maintained, generous, west-facing garden, being mainly laid to lawn and fence enclosed, with a patio area

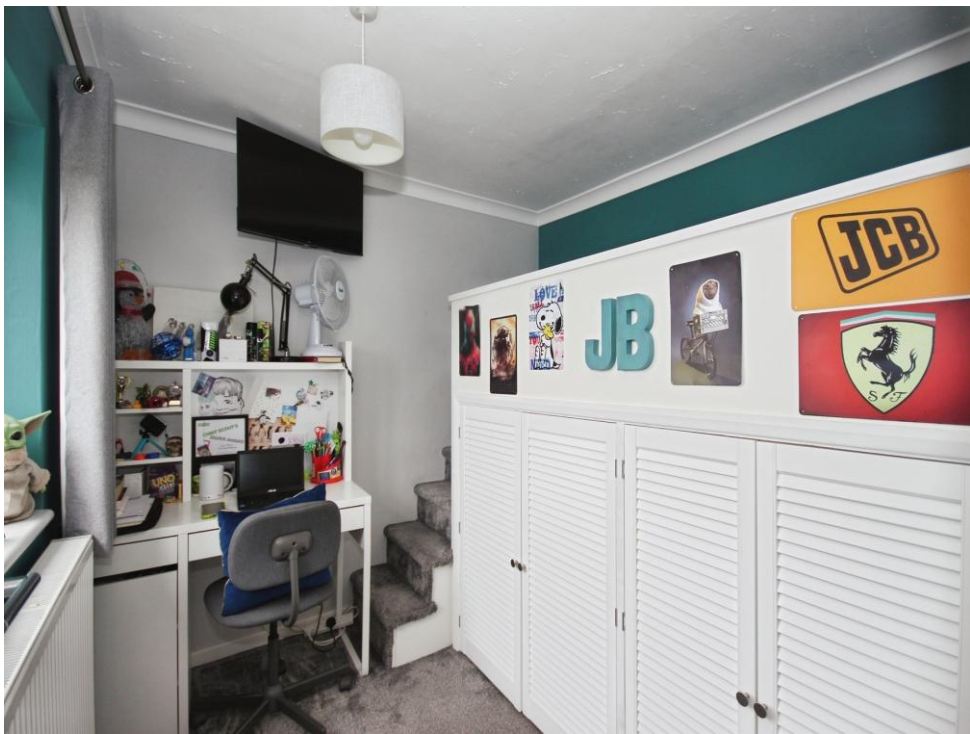
Shed

Having power and light.

Parking

Driveway providing off road parking for three cars.









Total floor area 168.4 m² (1,813 sq.ft.) approx

This floor plan is for illustrative purposes only. It is not drawn to scale. Any measurements, floor areas (including any total floor area), openings and orientation are approximate. No details are guaranteed, they cannot be relied upon for any purpose and they do not form part of any agreement. No liability is taken for any error, omission or misstatement. A party must rely upon its own inspection(s). Powered by www.propertybox.io



To view this property please contact Connells on

T 01926 881 441
E leamingtonspa@connells.co.uk

7-8 Euston Place
 LEAMINGTON SPA CV32 4LL

EPC Rating: C Council Tax Band: B

Tenure: Freehold

view this property online connells.co.uk/Property/SPA315012



1. MONEY LAUNDERING REGULATIONS Intending purchasers will be asked to produce identification documentation at a later stage and we would ask for your co-operation in order that there will be no delay in agreeing the sale. 2. These particulars do not constitute part or all of an offer or contract. 3. The measurements indicated are supplied for guidance only and as such must be considered incorrect. Potential buyers are advised to recheck measurements before committing to any expense. 4. We have not tested any apparatus, equipment, fixtures, fittings or services and it is in the buyers interest to check the working condition of any appliances.

Connells Residential is registered in England and Wales under company number 1489613, Registered Office is Cumbria House, 16-20 Hockliffe Street, Leighton Buzzard, Bedfordshire, LU7 1GN. VAT Registration Number is 500 2481 05.

See all our properties at www.connells.co.uk | www.rightmove.co.uk | www.zoopla.co.uk

Property Ref: SPA315012 - 0008