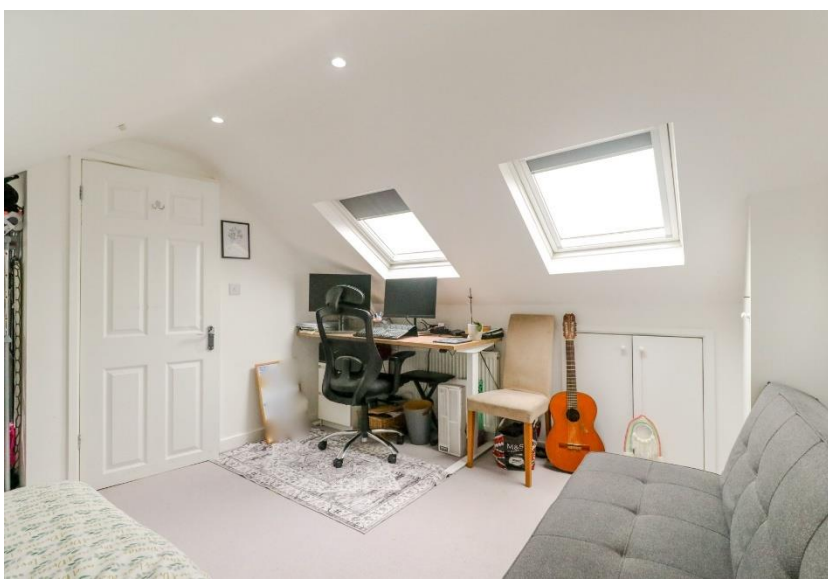




Morley Hill, Enfield



- BEAUTIFULLY PRESENTED VICTORIAN SEMI-DETACHED HOME
- SHORT WALK TO GORDON HILL STATION (MOORGATE LINE)
- SPACIOUS OPEN-PLAN LIVING & DINING ROOM
- MASTER BEDROOM WITH
- LUXURY FAMILY BATHROOM/WET ROOM
- GOOD SIZE LOW-MAINTENANCE REAR GARDEN
- CLOSE TO SHOPS, SCHOOLS & HILLY FIELDS COUNTRY PARK

Morley Hill

Enfield EN2 0BN

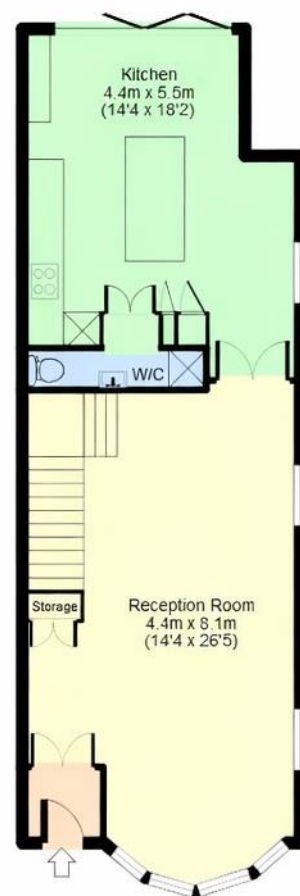
A beautifully presented 4-bedroom Victorian semi-detached home, ideally positioned close to local shops on Lancaster Road, Hilly Fields Country Park, and excellent schools, while being just a short walk from Gordon Hill Station (Moorgate Line). The property offers generous and well-balanced family accommodation throughout, including a welcoming entrance hallway, a spacious open-plan living and dining room, and a stylish kitchen/breakfast room fitted only a few years ago. Bi-folding doors open directly onto the rear garden, while a downstairs WC and utility area add convenience. Upstairs, there are three good-sized bedrooms, including a master bedroom with a contemporary en-suite shower room (installed just last year), plus a luxury family bathroom/wet room. The top floor hosts the fourth bedroom, ideal as a guest room, home office, or teenager's suite. Externally, the property enjoys a good-sized rear garden with low-maintenance artificial lawn and a patio area, perfect for outdoor entertaining.

Morley Hill lies within the sought-after north-London suburb of Gordon Hill / Enfield (EN2). It offers excellent transport links for families and commuters alike. Primary schools like Lavender Primary School are only a short walk away, secondary education such as Chace Community School and Enfield County School for Girls are within easy reach as well.

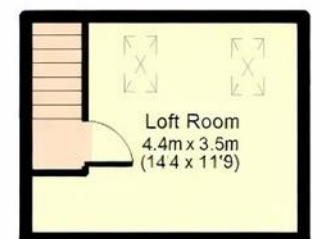


Morley Hill, Enfield, EN2

APPROX GROSS INTERNAL FLOOR AREA: 1268 sq. ft / 118 sq. m



Ground Floor



Second Floor

Score	Energy rating	Current	Potential
92+	A		
81-91	B		
69-80	C		77 C
55-68	D	66 D	
39-54	E		
21-38	F		
1-20	G		

For identification purposes. Measurements are approx