



Cedar Court, Crockford Park Road, Addlestone, KT15 2LQ

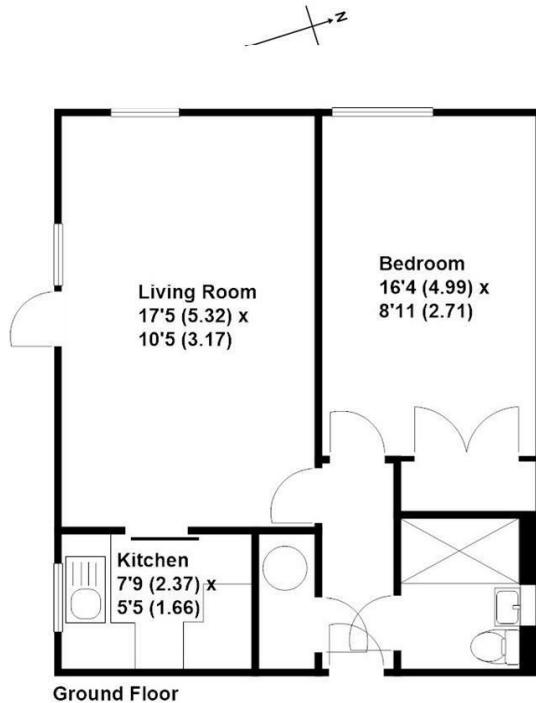




Situated on the ground floor of this popular retirement development is this well presented one bedroom apartment. Located a short level walk from the town centre, doctors and local amenities, the accommodation comprises of a good size shower room, double bedroom with built in wardrobe and a living room which is open to the fitted kitchen. A door from the living room opens out on to the pretty communal gardens, whilst the communal owners lounge and laundry are on the same level. Further benefits to the property include a secure door entry system, 24 hour care line system and on site house manager. Offered to the market with no onward chain.

Leasehold





**Approximate Gross Internal Floor Area - 453 sq/ft - 42 sq/mtr**

Grants Independent has prepared these sales particulars for general guidance purposes only. They do not form or constitute any part of an offer or contract. The services, systems and appliances listed in these details have not been tested by us, and no guarantee is given to their operational ability or efficiency. Lease details, service charges and ground rent are given as a guide and should be checked by your solicitor prior to exchange of contracts. These plans are not drawn to scale and are for representational purposes only. Created by [www.visionwithin.co.uk](http://www.visionwithin.co.uk)



**EPC Rating: 68 D**







Grants Homes 155 Station Road, Addlestone, Surrey, KT15 2AT  
T: 01932 858885 E: [addlestone@grantshomes.co.uk](mailto:addlestone@grantshomes.co.uk)

