



Rosary Gardens, SW7

£750 Per week

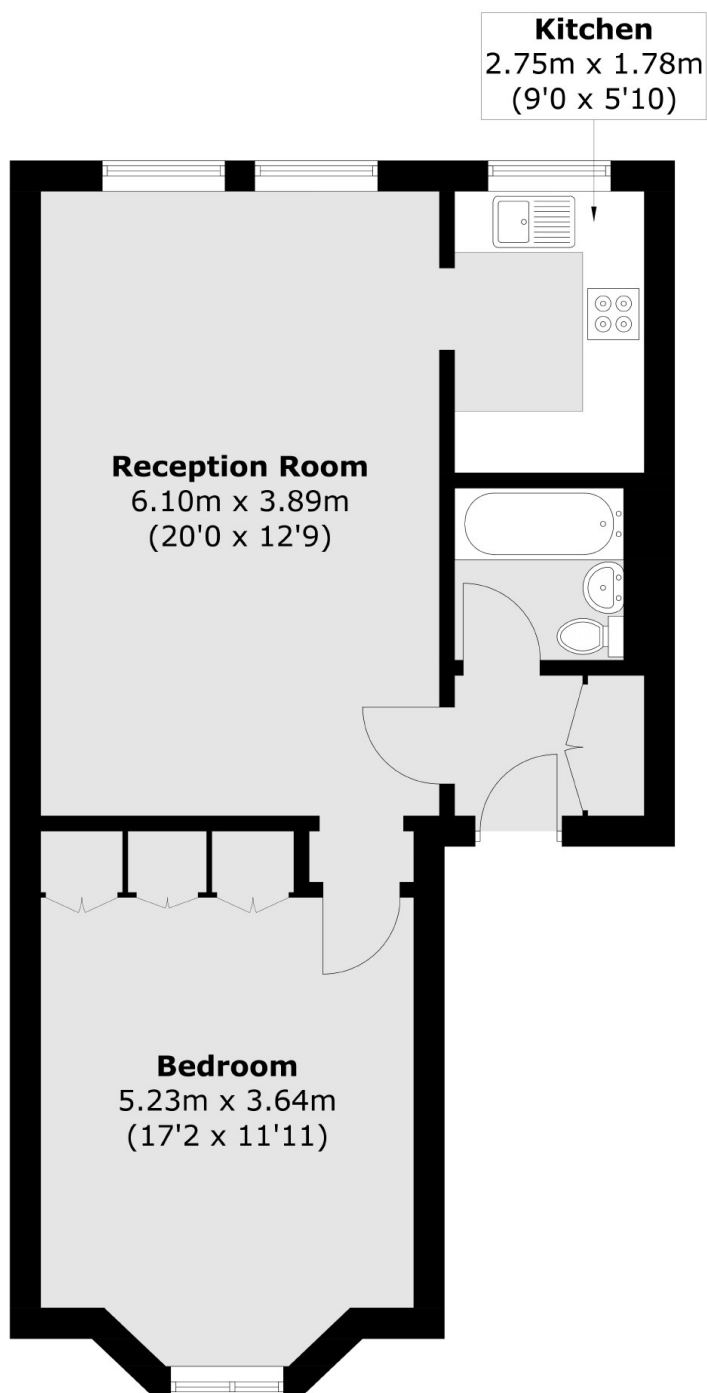
A well-presented one bedroom apartment, ideally suited to a single professional or a couple seeking a central location. The property features a generously sized living room and a separate kitchen.

Rosary Gardens is conveniently located close to the shops and restaurants of Gloucester Road, including Waitrose, Sainsbury's, and Prêt A Manger. The nearest Underground station is Gloucester Road.

Features

- Double Bedroom
- Ample Storage
- Wooden Floors
- Excellent Location
- Large Living Room
- West Facing

Rosary Gardens, London, SW7



Total area (approx.): 54.6 sq. m (587.7 sq. ft)