

ROBERTSON PHILLIPS
Estate Agents, Valuers,
Lettings and Property Management

262a Uxbridge Road, Hatch End,
Pinner, Middlesex HA5 4HS
Tel: 020 8428 7161

Email: pinner@robertsonphillips.co.uk

Harrow: 020 8863 1122
Lettings: 020 8421 4847



**ROBERTSON
PHILLIPS**

Estate Agents



Bellfield Avenue, Harrow Weald

£2,100,000



www.robertsonphillips.co.uk



An exceptional ultra-modern detached residence positioned within the exclusive private setting of Bellfield Avenue, Harrow Weald. This outstanding five-bedroom, five-bathroom family home has been meticulously designed to deliver luxurious contemporary living across expansive and versatile accommodation.

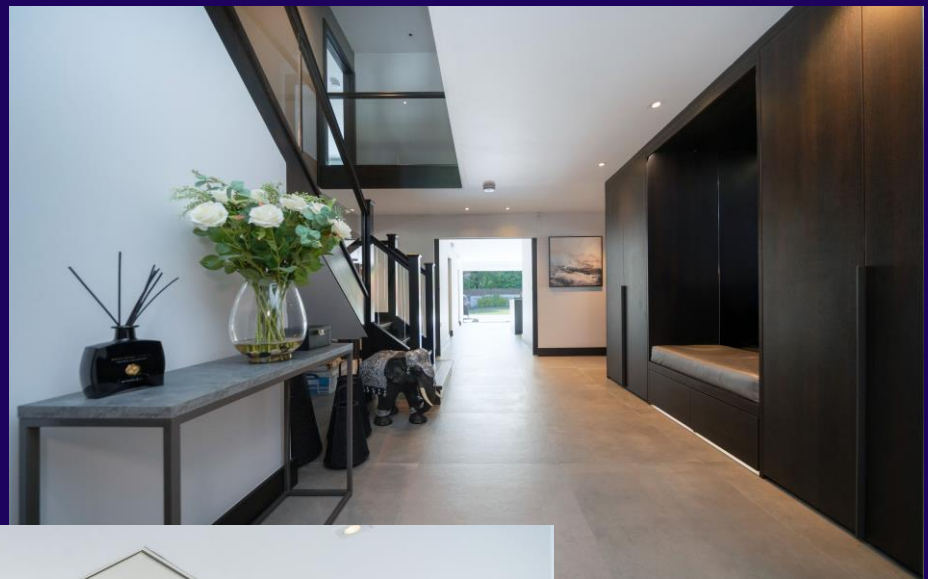
Finished to an uncompromising specification throughout, the property offers three elegant reception rooms, ideal for both formal entertaining and relaxed family living. A stunning open-plan kitchen and dining space forms the heart of the home, featuring sleek bespoke cabinetry, underfloor heating, premium integrated appliances, and expansive glazing that floods the interior with natural light while seamlessly connecting to the landscaped gardens.

The accommodation comprises five generously proportioned bedrooms, all beautifully appointed, with luxurious en-suite bathrooms and fitted wardrobes providing both comfort and practicality. The principal suite offers a sophisticated retreat with a sleek bathroom and dressing area.

Further enhancing the lifestyle appeal of this remarkable residence, there is a fully equipped private gym and a dedicated study ideal for home working.

Externally, the property benefits from a carriage driveway providing ample off-street parking, while the rear garden has been professionally landscaped to create a private and tranquil outdoor environment perfect for entertaining.

This impressive home combines privacy and exclusivity with convenient access to excellent local amenities, highly regarded schools, transport connections, and open green spaces.



Ground Floor

Entrance Hallway

Expansive entrance hallway, seating area, fitted cloak cupboards, shoe storage and seating area.

Ground Floor Guest Bedroom & En suite Shower Room 17' 3" x 11' 6" (5.25m x 3.50m) Well-equipped guest bedroom with fitted wardrobes, underfloor heating, ensuite shower room with double sink, heated towel rail, spacious shower and wc. This bathroom and bedroom have been designed to accommodate disabled access.

Study 13' 0" x 13' 0" (3.96m x 3.96m)

Currently used as a study/tv room with fitted desk and built in storage. This could also be turned into another reception room or cinema room.

Gym 10' 11" x 10' 2" (3.32m x 3.10m)

Versatile space, currently being used as a gym with mirrored wall.

WC

A modern WC combining clean design, comfort, and smart functionality. It typically features sleek lines, minimal decoration, and a streamlined appearance.

Kitchen/Dining Room 22' 10" x 21' 11" (6.95m x 6.68m)

A stunning family entertaining area, fitted with a bespoke Italian kitchen, high end appliances, breakfast cupboard, undermount sink and a multifunction gas/electric hob located on the island/breakfast bar. Floor to ceiling sliding patio doors connect the outside to the indoors and flood the kitchen with natural light, there is also a separate pantry and utility room with side access.

Living Room 22' 10" x 13' 8" (6.95m x 4.16m)

A tranquil living room tastefully designed with led lighting, fitted media unit, porcelain tiles with underfloor heating, hidden pocket doors connecting you to the kitchen/dining area and floor to ceiling sliding patio doors connecting you to the garden.

First Floor

Bedroom 1 18' 7" x 12' 9" (5.66m x 3.88m)

The Principal bedroom is located to the rear of the property and has its own walk-in wardrobe, fitted out by Neatsmith, pendant lighting, engineered wood floor and en-suite bathroom.

Walk in Wardrobe 8' 2" x 7' 7" (2.49m x 2.31m)

Fitted by Neatsmith, this sophisticated well organised walk-in wardrobe has been thoughtfully designed to accommodate plenty of storage.

Principal en-suite bathroom 12' 5" x 5' 4" (3.78m x 1.62m)

Elegantly designed and finished to a high standard with a generous walk-in shower, low level wc and double sink vanity unit, underfloor heating, heated towel rail and vanity mirror.

Bedroom 2 13' 5" x 12' 9" (4.09m x 3.88m)

En suite to bedroom 2 10' 3" x 7' 4" (3.12m x 2.23m)

Bedroom 3 13' 10" x 12' 5" (4.21m x 3.78m)

En suite to bedroom 3 12' 5" x 5' 3" (3.78m x 1.61m)

Bedroom 4 11' 6" x 10' 3" (3.50m x 3.12m)

En suite to bedroom 4 10' 3" x 5' 1" (3.12m x 1.56m)

Garden

Low maintenance west facing garden with a mixture of mature shrubs and established borders, mainly laid to lawn with a spacious porcelain patio which connects the living room and kitchen diner to the garden, a fantastic entertaining space. Shed located to the rear and side access to both sides.

Driveway

Carriage driveway, parking for multiple vehicles, a mixture of elegant shrubs and outdoor lighting really give this property a polished, refined, and sophisticated appearance.

Council Tax Band: G

EPC Rating: C

Tenure: Freehold

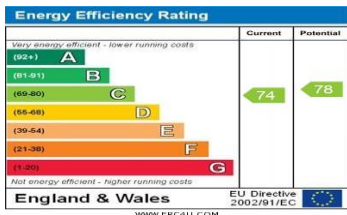
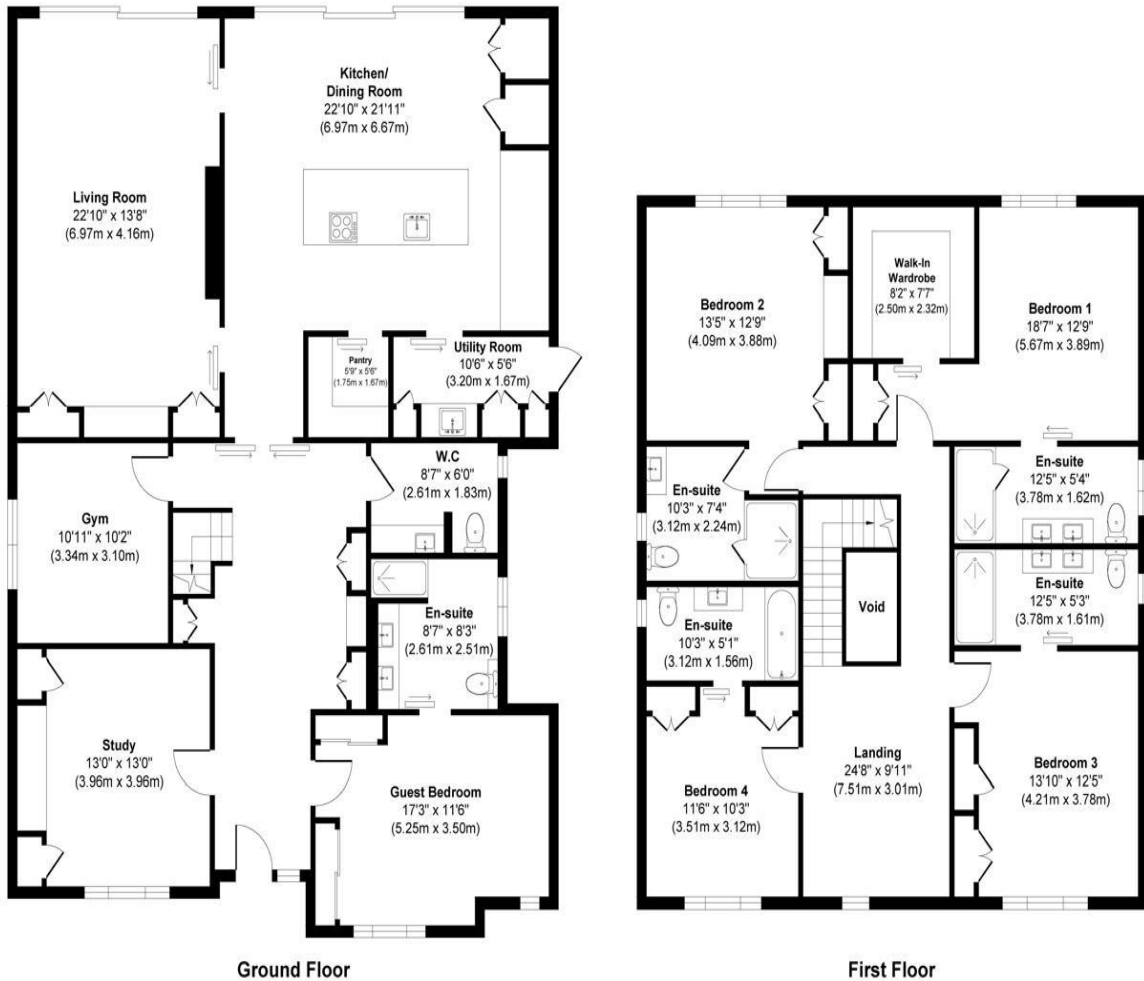
Facing: West



KEY FEATURES:

- Private Road
- Five Bedroom
- Five Bathroom
- Fully Refurbished
- Carriage Driveway
- Downstairs Guest Bedroom & Bathroom
- West Facing Garden
- Built to a High Specification

Approximate Gross Internal Area
Total = 2937 sq. ft - 272.85 sq. m



DISCLAIMER: Robertson Phillips may not have sought to verify the legal title of the property, the existence of planning permissions and/or building regulation approvals and have been unable to check the working condition of any services or appliances.

Property layouts are for general guidance and are not drawn exactly to scale. Measurements are taken at the widest points and bays, alcoves, wardrobes etc. may not be shown.