

Cromwell Road, SW5

£2,700 Per calendar month

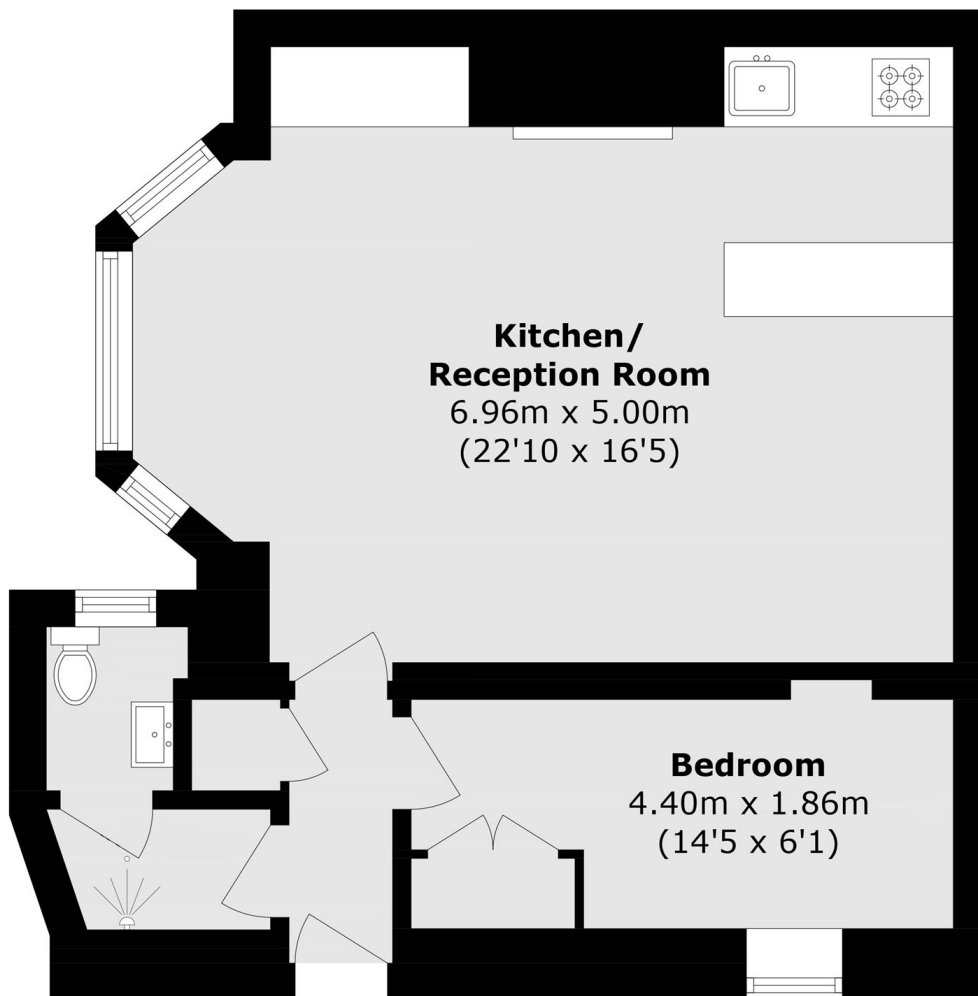
A modern, spacious and well presented one bedroom flat which benefits from its own private entrance. The flat has wooden flooring throughout and a fully integrated open plan kitchen.

Ideally located close to the shops and restaurants on Gloucester Road including Waitrose supermarket, Paul's Bakery and Starbucks coffee shop. The closest underground station is Gloucester Road with Earls Court close by too.

Features

- One Double Bedroom
- Open Plan Kitchen
- Wood Flooring Throughout
- Tiled Bathroom
- Private Entrance
- Coded Security Gate

Cromwell Road, London, SW5



Basement

Total area (approx): 48.0 sq. m (516.6 sq. ft)