



# Kings Terrace

London, NW1

Asking Price £700,000

A well-proportioned and thoughtfully arranged two-bedroom apartment set on the first floor of a modern, purpose built block, situated on a cobbled mews in the heart of Camden.

The property centres around a generous open plan reception room, dining space and kitchen, measuring over 23 feet in length, providing an excellent space for living and entertaining. There are two large double bedrooms, both featuring built in storage, with the principal bedroom benefitting from an en suite bathroom. There is also a spacious family bathroom and large storage cupboard.

Additional features include a private terrace, and a lift in the building.

**CHESTERTONS**



# Kings Terrace

## London, NW1

- Excellent Location
- Lateral Living
- Two Double Bedrooms
- Private Terrace
- Ample Storage Throughout
- Great Condition



Kings Terrace is a quiet cobbled street positioned behind Camden High Street and is an ideal location to take advantage of the local amenities. These include excellent transport links such as Camden Underground Station, Mornington Crescent & Camden Road (Overground) and a superb array of shops/restaurants. The green open spaces of Regent's Park are also a short walk away.

**Tenure:** Leasehold (107 years remaining)

**Service Charge:** £3400 P.A

**Ground Rent:** £350 P.A

**Local Authority:** Camden

**Council Tax Band:** E

Score	Energy rating	Current	Potential
92+	A		
81-91	B	83 B	83 B
69-80	C		
55-68	D		
39-54	E		
21-38	F		
1-20	G		

### *Chestertons Camden & Kentish Town Sales*

99-101 Parkway

Camden

London

NW1 7PP

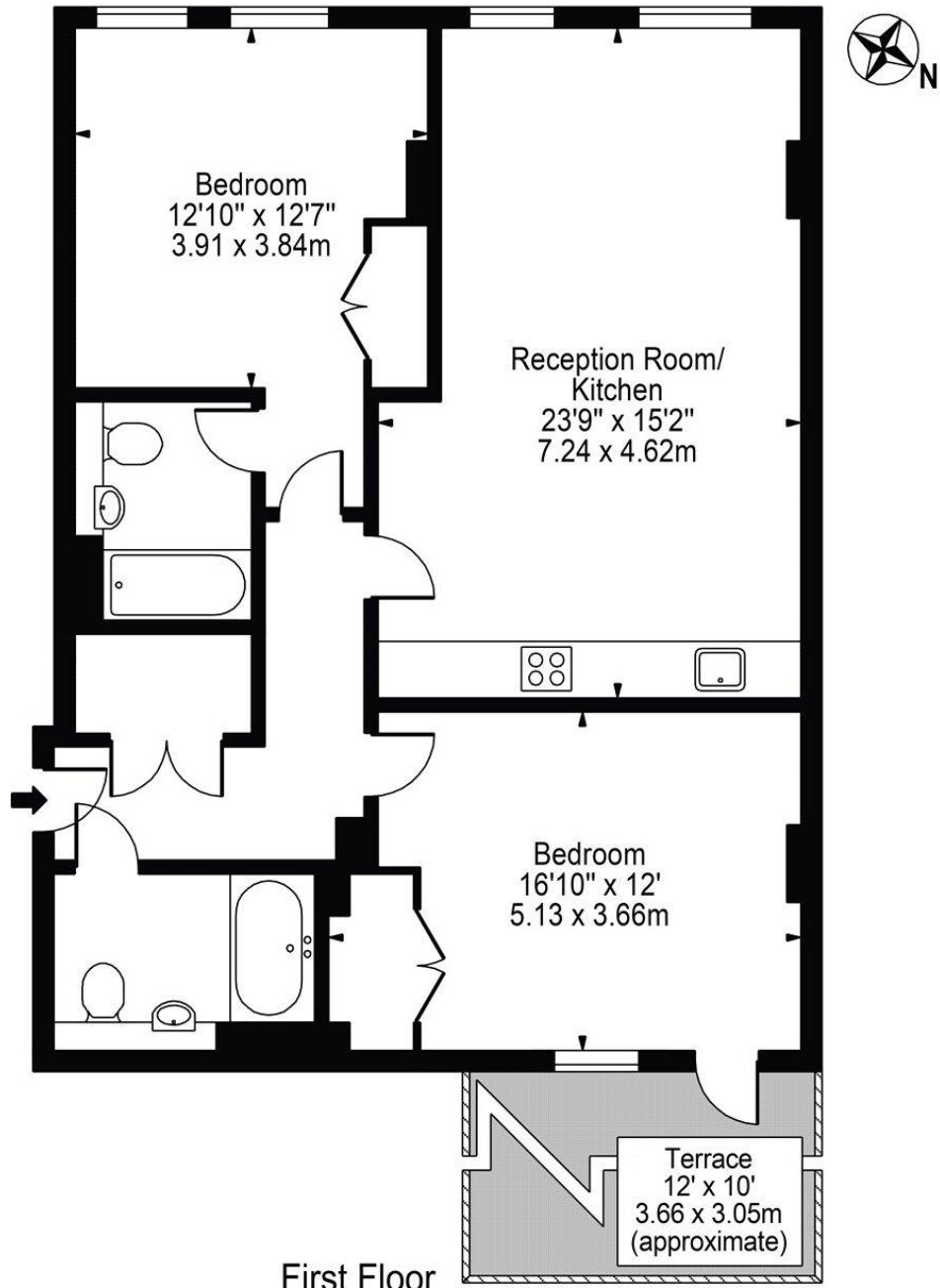
camden@chestertons.co.uk

020 7267 2053

chestertons.co.uk

# Kings Terrace, NW1

Approx. Gross Internal Area 942 Sq Ft - 87.51 Sq M



For Illustration Purposes Only - Not To Scale

This floor plan should be used as a general outline for guidance only and does not constitute in whole or in part an offer or contract. Any intending purchaser or lessee should satisfy themselves by inspection, searches, enquiries and full survey as to the correctness of each statement. Any areas, measurements or distances quoted are approximate and should not be used to value a property or be the basis of any sale or let.