



**OVER 60?**

Secure this property  
for up to **59% less!**

**Price**

**£275,000**

**Freehold**

2x  1x  1x 

**Blackpan Close,  
Sandown, Isle of Wight,  
PO36**

**Pittis**   
Helping you move forwards





## Main features

- **Lovely bungalow in quiet cul de sac location**
- **Very well presented throughout**
- **Conservatory overlooking the rear garden**
- **Easy to maintain level gardens**
- **Level walk to the local shops and bus stop**

## Accommodation

### GROUND FLOOR

Entrance Porch

Lounge: 17'8 x 11'11 (5.39m x 3.63m)

Kitchen: 11'10 x 6'10 (3.61m x 2.08m)

Conservatory: 17'2 x 9'11 (5.24m x 3.02m)

Inner hall

Bedroom 1: 10'10 x 9'9 (3.30m x 2.97m)

Bedroom 2: 9'10 x 6'11 (3.00m x 2.11m)

Bathroom

### OUTSIDE

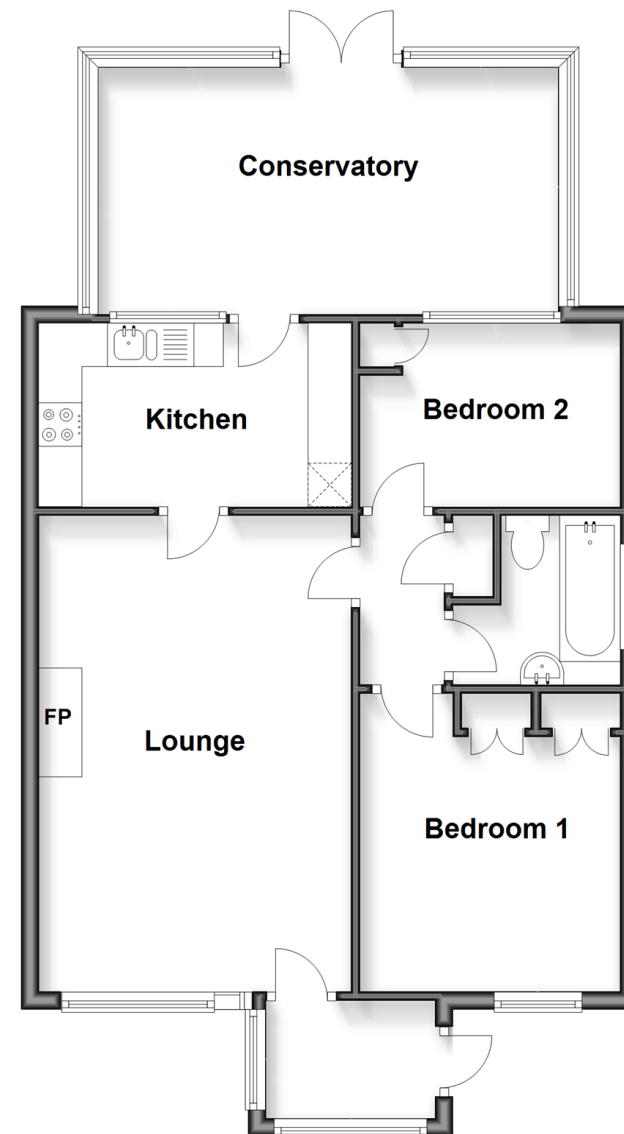
Front Garden

Rear Garden

Garage

## Ground Floor

Approx. 70.1 sq. metres (754.8 sq. feet)



**Call Shanklin - 01983 868777 ■ [pittis.co.uk](http://pittis.co.uk)**

- Legal advice should be taken to verify fixtures/fittings, planning, alterations and/or lease details
- Appliances & services are untested, dimensions are approximate and floor plans are not to scale
- Through a Homewise Home For Life Plan people aged 60+ can secure this property for up to 59% less, by purchasing a Lifetime Lease.



60619594/20250709/CP/CS