



Guide Price
£280,000

Leasehold

2x  1x  2x 

**Wickham Road, Shirley,
Croydon, Surrey, CR0**

OVER 60?

Secure this property
for up to **59% less!**

cubitt & west
Helping you move forwards



Main features

- Recently refurbished throughout
- Situated over two floors great for families and first time buyers
- Moments away from the local high street and transport links
- Bright and Airy throughout
- Ample Storage throughout

Accommodation

FIRST FLOOR

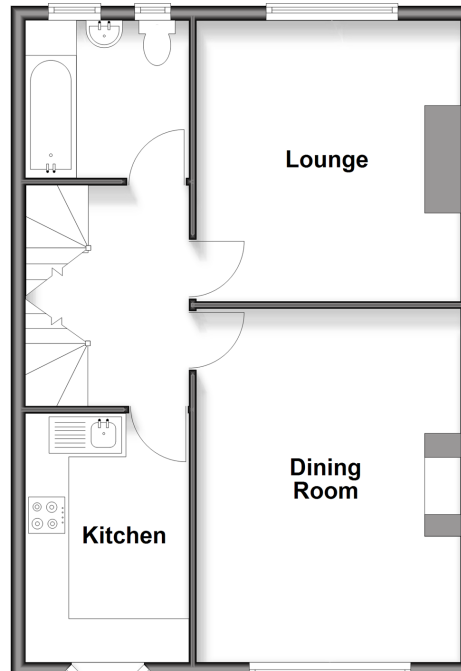
Living Room
Dining Room
Bathroom
Kitchen

SECOND FLOOR

Bedroom 1
Bedroom 2

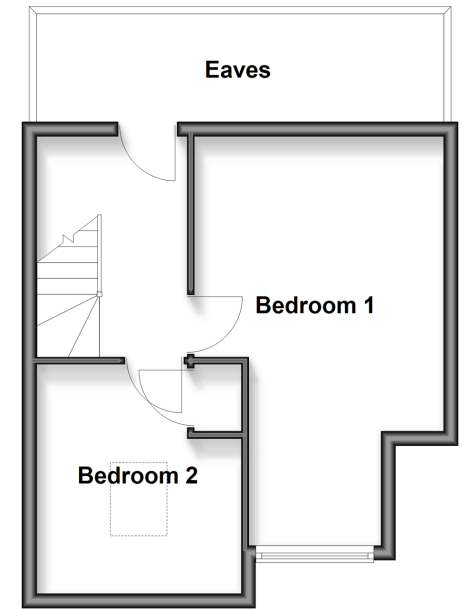
First Floor

Approx. 52.8 sq. metres (568.8 sq. feet)



Second Floor

Approx. 32.0 sq. metres (344.6 sq. feet)



Call Shirley - 020 8654 3037 ■ cubittandwest.co.uk

■ Legal advice should be taken to verify fixtures/fittings, planning, alterations and/or lease details
■ Through a Homewise Home For Life Plan people aged 60+ can secure this property for up to 59% less, by purchasing a Lifetime Lease.

■ Appliances & services are untested, dimensions are approximate and floor plans are not to scale



21711855/20250804/EP/MS