



Bosman Drive, Windlesham

**£760,000**



## Bosman Drive, Windlesham

An extended and modernised detached family home with impressive open plan kitchen/dining/family room.

### FEATURES

- Extended and modernised
- Shaker style Howdens kitchen
- Quartz worktops and breakfast bar
- Covered entrance porch
- Wider than average plot
- Velux windows
- Log burner
- Gas central heating and double glazing

### ACCOMODATION

- Entrance hall
- Downstairs cloakroom
- Kitchen/breakfast room/family room
- Sitting room
- Dining room
- Utility room
- Four bedrooms
- Two bath/shower rooms

### OUTSIDE

- Driveway parking
- Landscaped garden with patio
- Extended double garage with electric doors

### LOCAL AUTHORITY

Surrey Heath – band F

### EPC RATING

C





**Bosman Drive**

Approximate Gross Internal Area = 170.7 sq m / 1837 sq ft

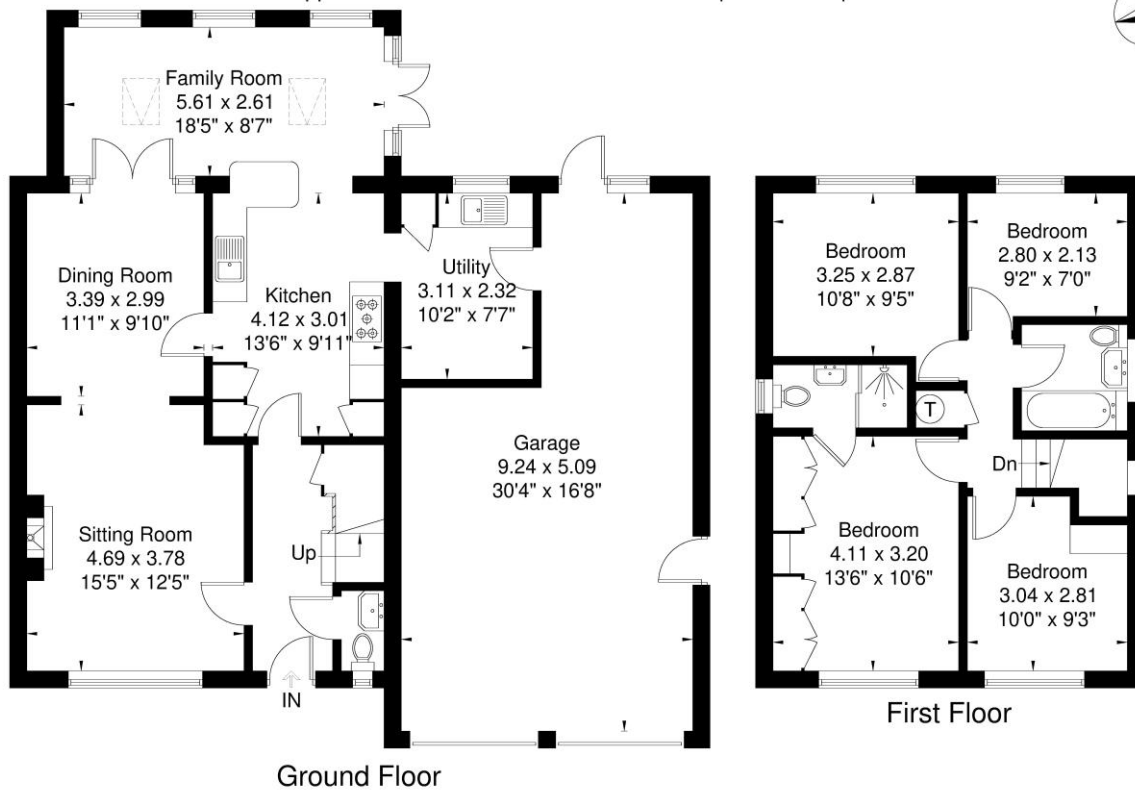


Illustration for identification purposes only, measurements are approximate, not to scale.

**Disclaimer:** We wish to inform prospective purchasers that we have prepared these sales particulars as a general guide. We have not carried out a detailed survey, nor tested the services, appliances and specific fittings. Room sizes are approximate and rounded: they are taken between internal wall surfaces and therefore include cupboards / shelves, etc. Accordingly, they should not be relied upon for carpeting, curtains / blinds and kitchen equipment, whether fitted or not, are deemed removable by the vendor unless specifically itemized within these.

**Postcode for sat nav: GU20 6JW**

