



Wick Lane, London, E3

BUTLER & STAG



**Guide Price - £600,000 to £650,000**

**Positioned on the top floor of Ink Court on Wick Lane, this generous three-bed, two-bath apartment offers nearly 1,150 sq ft of thoughtfully arranged living space, flooded throughout with natural light. Its elevated position, expansive windows, and open layout create a calm, airy atmosphere ideal for both relaxing and entertaining.**



## Leasehold

- Three Double Bedrooms
- Close To 1150 Sq Ft.
- Concierge Service
- Lift Access
- Two Bathrooms
- Top Floor
- Private Underground Parking
- EWS1 Compliant

The main living area is impressively spacious, providing ample room for comfortable lounge seating and a dedicated dining zone. Large windows draw in sunlight throughout the day, enhancing the sense of openness and connection with the surrounding neighbourhood. The adjoining kitchen is neatly integrated, offering practical workspace and good storage while keeping the social flow of the home uninterrupted.

All three bedrooms are well-proportioned, with the principal bedroom benefiting from its own en-suite bathroom. A second full bathroom serves the remaining bedrooms and guests, making the layout especially convenient for families, sharers, or those seeking a dedicated home office.

Further advantages include secure underground parking, a valuable asset in this location, as well as concierge service, providing both convenience and peace of mind.

With its generous footprint, top-floor setting, excellent natural light, and desirable amenities, this apartment presents an appealing opportunity in a well-connected and increasingly sought-after part of Wick Lane.

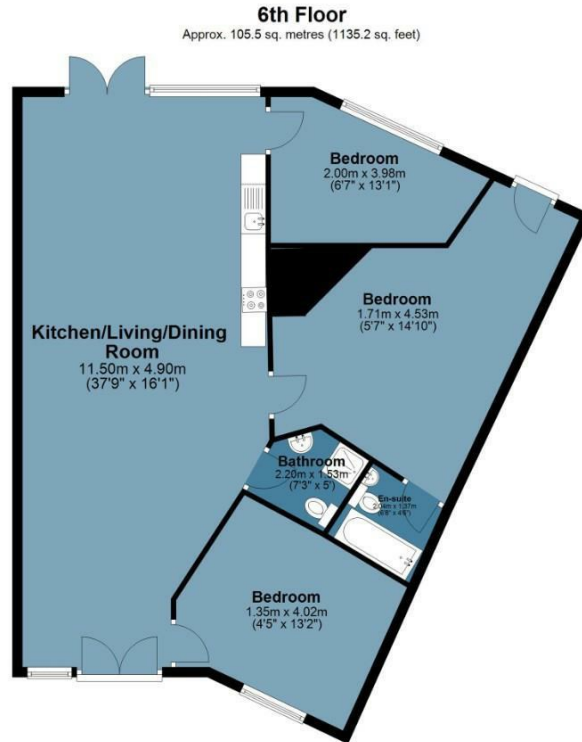




## Ink Court

Approx. Gross Internal Area 105.5 Sq M ( 1135.2 Sq Ft )

BUTLER & STAG



Measurements are approximate and for illustration purposes only. While we do not doubt the accuracy and completeness, we advise you conduct a careful independent assessment of the property to determine monetary value.  
© @modephotouk www.modephoto.co.uk

BUTLER & STAG

☎ 020 8102 1236

🏠 508 Roman Road, Bow, London, E3 5LU

✉ bow@butlerandstag.com

[www.butlerandstag.uk](http://www.butlerandstag.uk)

IMPORTANT NOTICE - These particulars have been prepared in good faith and they are not intended to constitute part of an offer or contract. We have not performed a structural survey on this property and the services, appliances and specific fittings have not been tested. All photographs, measurements, floor plans and distances referred to are given as a guide and should not be relied upon.