



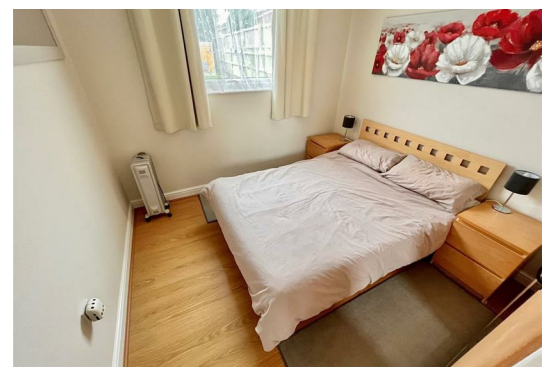
43 Bermuda Newport Road

Hemsby, Great Yarmouth, NR29 4NN

Offers In The Region Of £20,000



Aldreds are pleased to offer this nicely positioned, two bedroom holiday chalet situated in the popular Bermuda Holiday Park. The accommodation comprises of an open plan living room/kitchen, two double bedrooms and bathroom. Outside the chalet faces a westerly direction in a quiet corner of the site. The chalet also benefits from double glazed windows and is being sold equipped with contents.



Open Plan Living Area/Kitchen

Lounge Area 12'0" x 11'3" (3.66 x 3.45)

Double glazed pvc entrance door, front facing full height double glazed window, power points, tv point, wood effect laminate flooring, timber fireplace surround with electric coal effect fire, doors leading off, sofa bed, table and chairs, open plan access to:-

Kitchen Area 7'5" x 5'8" (2.28 x 1.75)

Double glazed window to front aspect, range of fitted cream kitchen units with wall and matching base units with roll top work surfaces over and tiled splashbacks, double bowl stainless steel sink and drainer with mixer tap over, power points, recess with electric cooker and extractor.

Bedroom 1 10'3" x 9'2" (3.13 x 2.80)

Including built in wardrobe cupboard, double glazed window to rear aspect, power points, double bed.

Bedroom 2 10'3" x 8'5" (3.13 x 2.58)

Including a built in wardrobe cupboard housing the electric meter, double glazed window to rear aspect, two single beds.

Bathroom

Two frosted double glazed windows to side aspect, electric shaver point with light, white suite comprising panel bath with tiled surround and electric shower over, pedestal hand wash basin with tiled splash back, low level WC.

Outside

The property sits in the corner of the site with a westerly facing aspect with well maintained communal lawned grounds, communal parking and use of on site facilities.

Tenure

Leasehold. Approximately 52 years remaining on the current lease.

Ground Rent and Site fees - 2022/2023 approximately £1314.88

Council Tax

Great Yarmouth Borough Council - Band 'A'

Location

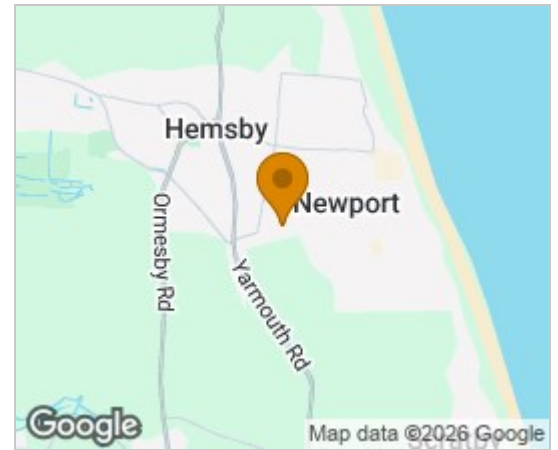
Hemsby is a coastal village approximately 7 miles north of Great Yarmouth. The tourist-based part of the village lies along Beach Road and is commonly known as Hemsby Beach. At the beach end of the road are a number of cafes, shops and amusement arcades, ten-pin bowling, bingo, a play area and many different machines. A variety of seaside-style cafes and restaurants are available, offering sit-down meals, take-away fish and chips and Chinese food. Fun fairs, crazy golf courses and children's rides also feature on a number of sites along the street.

Directions

On arriving in the village of Hemsby from Great Yarmouth, turn right into Newport Road, turn left into Bermuda Holiday Site, follow the access road as it bears round to the left, continue to the end of the road where parking is available and the chalet can be found towards the far left hand corner.

Ref: Y11826/08/23/CF

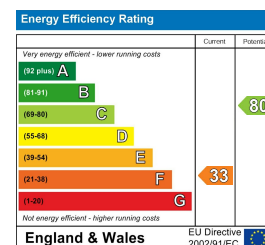
Area Map



Floor Plans



Energy Efficiency Graph



Disclaimer

These particulars are issued on an understanding that all negotiations shall be conducted through Messrs. Aldreds. Please note: Messrs. Aldreds for themselves and for the vendors or lessors of this property whose agents they are given notice that: 1. Particulars are set out as a general outline only for guidance of intending purchasers or lessees, and do not constitute nor constitute part of, an offer or contract. 2. All descriptions, dimensions, references to condition and necessary permissions for use and occupation, and other details are given without responsibility and any intending purchasers or tenants should not rely on them as statements or representations of fact but must satisfy themselves by inspection or otherwise as to the correctness of each of them. 3. No person in the employment of Messrs. Aldreds has any authority to make or give any representation or warranty whatever in relation to this property. 4. If you are proposing to visit the property and are travelling some distance please check with Aldreds on the issue of availability prior to travelling. 5. Aldreds Property Consultants and associated services may offer additional services to the prospective purchaser for which they will be entitled to receive a commission.

Aldreds are pleased to be working with Mortgage Advice Bureau. They're an award-winning mortgage broker with over 1,400 advisers across the UK, and have access to over 12,000 mortgage products from over 90 lenders. Aldreds Estate Agents Ltd receive a commission of £200 on each completed case. Your home may be repossessed if you do not keep up repayments on your mortgage. There may be a fee for mortgage advice. The actual amount you pay will depend upon your circumstances. The fee is up to 1%, but a typical fee is 0.3% of the amount borrowed. Mortgage Advice Bureau is a trading name of Mortgage Seeker Limited which is an appointed representative of Mortgage Advice Bureau Limited and Mortgage Advice Bureau (Derby) Limited which are authorised and regulated by the Financial Conduct Authority. Mortgage Seeker Limited Registered Office: Lovewell Blake, Sixty Six North Quay, Great Yarmouth, Norfolk, NR30 1HE. Registered in England Number: 03721415. 6. Potential purchasers should check with their providers that the broadband and mobile phone coverage they would require is available.

17 Hall Quay, Great Yarmouth, Norfolk, NR30 1HJ
Tel: 01493 844891 Email: yarmouth@aldreds.co.uk <https://www.aldreds.co.uk/>

Registered in England Reg. No. 08945751 Registered Office: 17 Hall Quay, Great Yarmouth, Norfolk NR30 1HJ Directors: Mark Duffield B.S.c. FRICS. Dan Crawley MNAEA Paul Lambert MNAEA