



GINGER COW
ESTATE AGENTS

01234 860215

Wheatfield Road, Wixams

£315,000

2 3

This beautifully presented two-bedroom mid-terrace home offers stylish, move-in-ready accommodation, ideal for first-time buyers, downsizers or investors. The ground floor comprises an entrance hall, cloakroom, modern fitted kitchen and a bright lounge/dining room to the rear with French doors opening onto the garden. Upstairs, there are two well-proportioned bedrooms, including a principal bedroom with ensuite shower room, alongside a contemporary family bathroom. Outside, the enclosed rear garden features a patio seating area, lawn and a useful garden shed, providing an excellent space to relax or entertain. To the front, the property benefits from two allocated parking spaces. Combining modern interiors, practical living space and a popular location, this is a fantastic home ready to be enjoyed from day one.

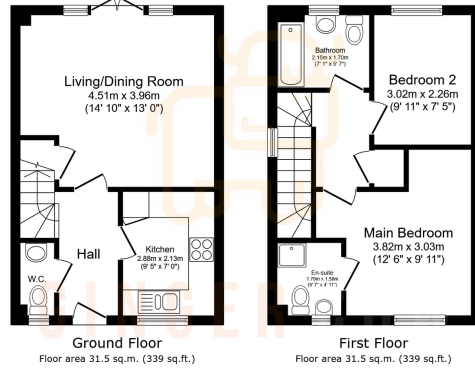


Floor Area: sq. ft.

Tenure: Freehold

Service Charge: £0 per annum

Ground Rent: £0 per annum



Total floor area: 63.0 sq.m. (678 sq.ft.)
This floor plan is for illustrative purposes only. It is not drawn to scale. Any measurements, floor areas (including any total floor area), openings and orientations are approximate. No details are guaranteed. They cannot be relied upon for any purpose and do not form any part of any agreement. No liability is taken for any error, omission or misstatement. A party must rely upon its own inspection(s). Powered by www.propertybox.co.uk

