



Mill Park Gardens, Mildenhall, Suffolk, IP28 7FE

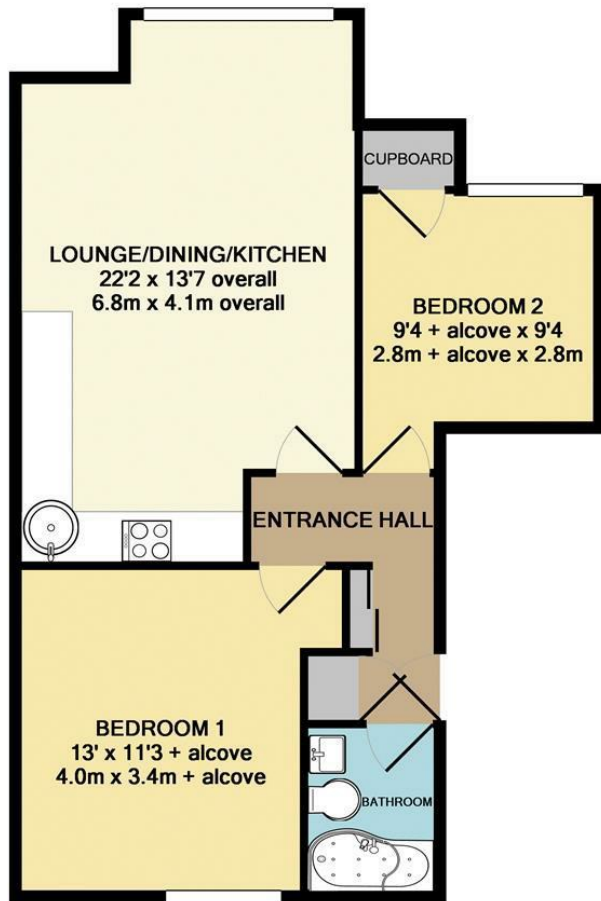
Rent - £1,215 PCM Deposit - £1,401

This immaculate two bedroom ground floor flat is located in a popular development close to RAF Mildenhall & Lakenheath. The property benefits from stylish accommodation throughout to include two double bedrooms, kitchen with built in dishwasher, modern bathroom & allocated parking.

- MODERN APARTMENT
- 2 DOUBLE BEDROOMS
- CLOSE TO RAF BASES
- MODERN FAMILY BATHROOM
- COMMUNAL GARDENS & ALLOCATED PARKING
- CLOSE TO THE TOWN CENTRE
- GAS HEATING & ENERGY RATING- C
- APPROXIMATE SIZE - 610 SQ FT
- COUNCIL TAX BAND - A
- AVAILABLE EARLY MAY



Council Tax Band: A - EPC Rating: C 71



TOTAL APPROX. FLOOR AREA 610 SQ.FT. (56.6 SQ.M.)

Whilst every attempt has been made to ensure the accuracy of the floor plan contained here, measurements of doors, windows, rooms and any other items are approximate and no responsibility is taken for any error, omission, or mis-statement. This plan is for illustrative purposes only and should be used as such by any prospective purchaser. The services, systems and appliances shown have not been tested and no guarantee as to their operability or efficiency can be given
Made with Metropix ©2017

