



Bath Terrace, SE1

£450,000

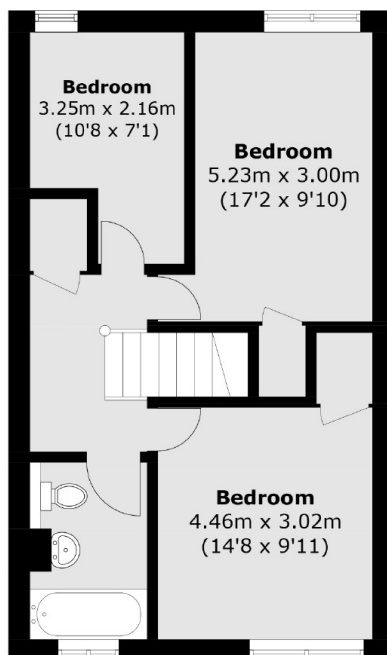
Situated on a quiet leafy street, this bright and airy split level three bedroom flat boasts a large living space, separate kitchen, private balcony, family bathroom, guest WC, ample storage and permit parking.

Bath Terrace is 0.2 miles to Elephant & Castle Station and 0.3 miles from Borough Station offering excellent transport links to anywhere in London. A wide range of shops, cafés, delis and restaurants are moment away.

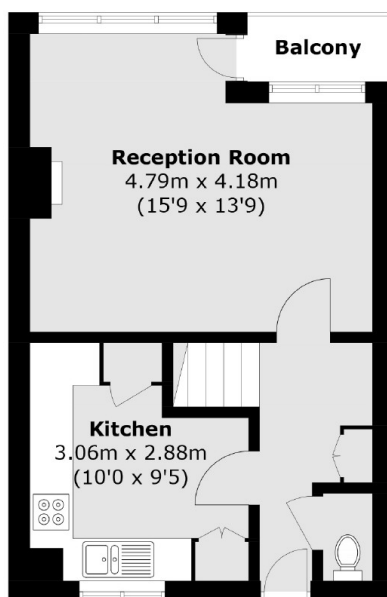
Features

- Three Bedrooms
- Split Level Flat
- Fantastic Location
- Private Balcony
- Long Lease
- Downstairs Guest WC
- Permit Parking

Bath Terrace, London, SE1



Second Floor



First Floor

Total area (approx.): 75.7 sq. m (814.9 sq. ft)
Balcony: 1.8 sq. m (19.4 sq. ft)