



105 Marsham Street, SW1P | £2,500 Per Month



**TUCKERMAN**  
ESTATE AGENTS  
PROPERTY PROFESSIONALS

# Marsham Street, Westminster

Nestled in the heart of London, Neville House offers a modern and inviting living space that is perfect for individuals or couples seeking comfort and convenience. This spacious one-bedroom flat spans an impressive 437 square feet, providing ample room for relaxation and everyday living.

The property features a well-appointed reception room that serves as a welcoming area for both entertaining guests and unwinding after a long day. The bedroom is designed to be a tranquil retreat, ensuring a peaceful night's sleep. The bathroom is modern and functional, catering to all your daily needs.

One of the standout features of this flat is its prime location on Marsham Street, which places you within easy reach of a variety of local amenities, including shops, restaurants, and public transport links. Whether you are commuting to work or exploring the vibrant city, you will find that everything you need is just a stone's throw away.





# Marsham Street, Westminster

Available

Per Month: £2,500 Per Month

Furnishing: Furnished

Available From: 3rd July 2026

Local Authority: Westminster City Council

Council Tax Band: D

Approximate Gross Internal Area:  
437.00 sq ft

Energy Efficiency Rating		
	Current	Potential
<i>Very energy efficient - lower running costs</i>		
(92 plus) <b>A</b>		
(81-91) <b>B</b>	<b>83</b>	<b>87</b>
(69-80) <b>C</b>		
(55-68) <b>D</b>		
(39-54) <b>E</b>		
(21-38) <b>F</b>		
(1-20) <b>G</b>		
<i>Not energy efficient - higher running costs</i>		
<b>England &amp; Wales</b>	EU Directive 2002/91/EC	

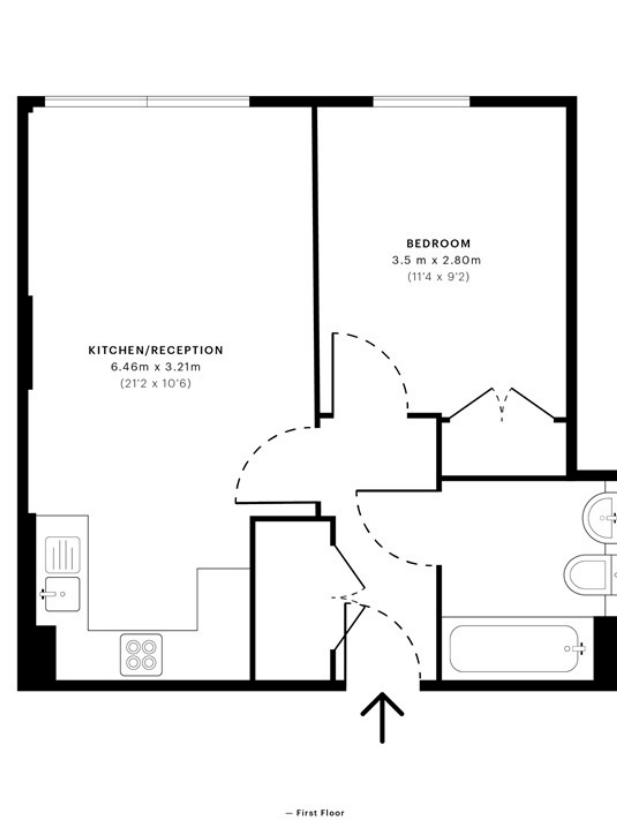
TUCKERMAN  
ESTATE AGENTS

Marsham Street, SW1P

CAPTURE DATE 18/08/2022 LASER SCAN POINTS 37,823,181

GROSS INTERNAL AREA

40.09 sqm / 431.53 sqft



— First Floor

GROSS INTERNAL AREA (GIA)  
The footprint of the property  
40.09 sqm / 431.53 sqft

NET INTERNAL AREA (NIA)  
Excludes walls and external features  
Includes washrooms, restricted head height  
38.57 sqm / 415.16 sqft

EXTERNAL STRUCTURAL FEATURES  
Balconies, terraces, verandas etc.  
0.00 sqm / 0.00 sqft

RESTRICTED HEAD HEIGHT  
Limited use area under 1.8m  
0.00 sqm / 0.00 sqft



Spec Verified floor plans are produced in accordance with Royal Institution of Chartered Surveyors' Property Measurement Standards. Plots and gardens are illustrative only and excluded from all area calculations. Due to rounding, numbers may not add up precisely. All measurements shown for the individual room lengths and widths are the maximum points of measurements captured in the scan.

IPWS 2B RESIDENTIAL 40.09 sqm / 431.53 sqft  
IPWS 3C RESIDENTIAL 38.94 sqm / 419.15 sqft

spec id: 621e20caa5eb310e370a95a0

Agents Note: Whilst every care has been taken to prepare these sales particulars, they are for guidance purposes only. All measurements are approximate are for general guidance purposes only and whilst every care has been taken to ensure their accuracy, they should not be relied upon and potential buyers are advised to recheck the measurements

**TUCKERMAN**  
ESTATE AGENTS  
PROPERTY PROFESSIONALS

020 7222 5510

info@tuckermanresidential.co.uk  
52 Moreton Street, London, SW1V 2PB  
www.tuckermanresidential.co.uk