



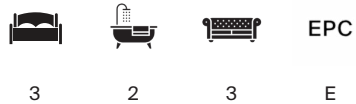
THE THATCHED COTTAGE

Chilcomb, Nr Winchester



THE THATCHED COTTAGE CHILCOMB

A Grade II listed house complemented by beautifully landscaped grounds creating a classic English country setting close to Winchester.



Local Authority: Winchester City Council

Council Tax band: F

Tenure: Freehold

Guide Price: £995,000



THE THATCHED COTTAGE, CHILCOMB

The Thatched Cottage is a spacious home with charming period features and views over the garden, paddock and surrounding countryside. The principal double reception room has a central brick built fireplace and forms the heart of the ground floor accommodation. To the eastern end is a more modern sitting room with a Jetmaster fireplace and French doors to the terrace. To the western side of the house is a bespoke fitted kitchen/breakfast room and stairs down to a lower ground study. Upstairs, the spacious main bedroom has a large bath/shower room and adjacent dressing area. There are two further double bedrooms and a family bathroom. The gardens and grounds extend to the west and south of the house with abundant shrub and flower borders creating year-round interest. The gravel drive leads to a double garage with an adjoining workshop and there is a separate paddock to the west of 1.86 acres.







The Thatched Cottage

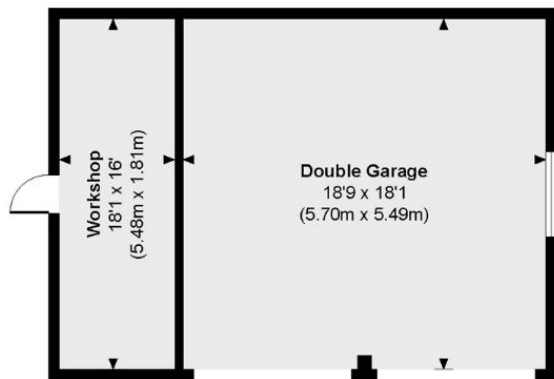
Approximate Gross Internal Area

Main House = 2292 Sq Ft / 212.89 Sq M

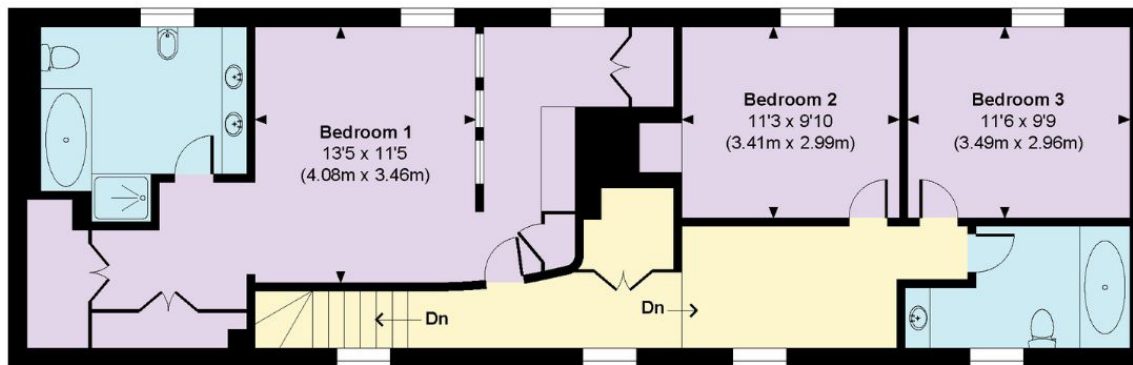
Double Garage / Workshop = 451 Sq Ft / 41.94 Sq M

Total = 2743 Sq Ft / 254.83 Sq M

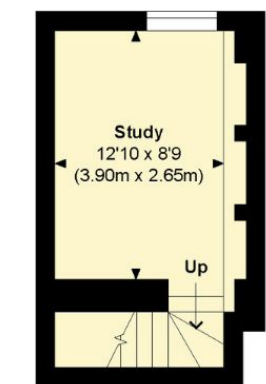
Outbuildings are not shown in correct orientation or location.



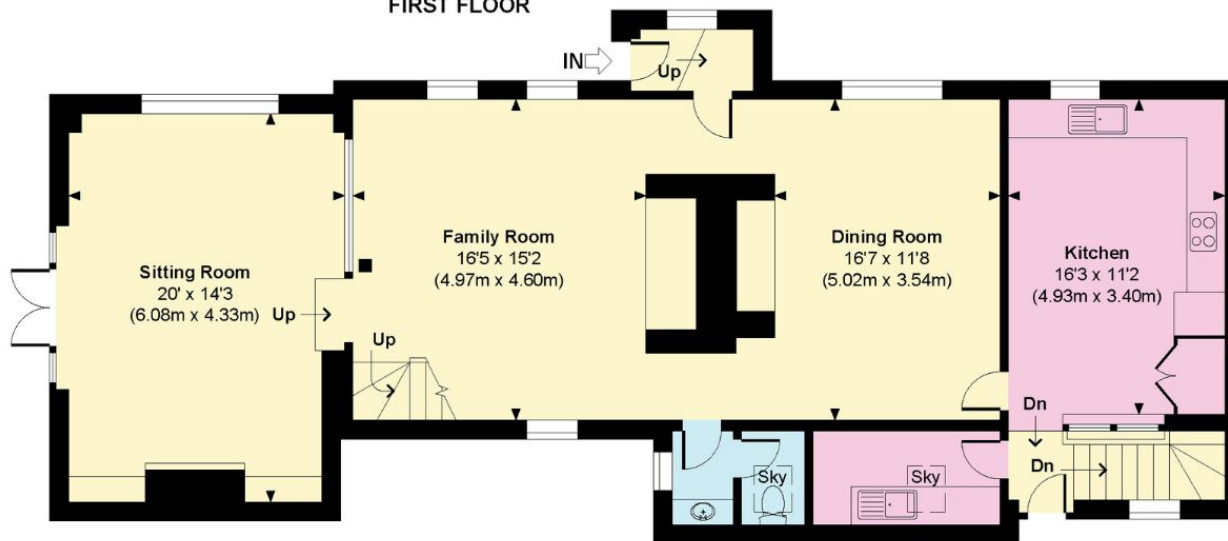
DOUBLE GARAGE / WORKSHOP



FIRST FLOOR



LOWER GROUND FLOOR



GROUND FLOOR

This plan is for layout guidance only. Not drawn to scale unless stated. Windows and door openings are approximate. Whilst every care is taken in the preparation of this plan, please check all dimensions, shapes and compass bearings before making any decisions reliant upon them. (ID767266)

We would be delighted
to tell you more.

Lottie Lambert
01962 677246
lottie.lambert@knightfrank.com

Knight Frank Winchester
14 Jewry Street
Winchester SO23 8RZ

[knightfrank.co.uk](https://www.knightfrank.co.uk)

Your partners in property

1. Particulars: These particulars are not an offer or contract, nor part of one. You should not rely on statements given by Knight Frank in the particulars, by word of mouth or in writing ("information") as being factually accurate about the property, its condition or its value. Neither Knight Frank nor any joint agent has any authority to make any representations about the property, and accordingly any information given is entirely without responsibility on the part of Knight Frank. 2. Material Information: Please note that the material information is provided to Knight Frank by third parties and is provided here as a guide only. While Knight Frank has taken steps to verify this information, we advise you to confirm the details of any such material information prior to any offer being submitted. If we are informed of changes to this information by the seller or another third party, we will use reasonable endeavours to update this as soon as practical. 3. Photos, Videos etc: The photographs, property videos and virtual viewings etc. show only certain parts of the property as they appeared at the time they were taken. Areas, measurements and distances given are approximate only. 4. Regulations etc: Any reference to alterations to, or use of, any part of the property does not mean that any necessary planning, building regulations or other consent has been obtained. A buyer must find out by inspection or in other ways that these matters have been properly dealt with and that all information is correct. 5. Fixtures and fittings: A list of the fitted carpets, curtains, light fittings and other items fixed to the property which are included in the sale (or may be available by separate negotiation) will be provided by the Seller's Solicitors. 6. VAT: The VAT position relating to the property may change without notice. 7. To find out how we process Personal Data, please refer to our Group Privacy Statement and other notices at <https://www.knightfrank.com/legals/privacy-statement>.

Particulars dated April 2026. Photographs and videos dated May 2024. All information is correct at the time of going to print. Knight Frank is the trading name of Knight Frank LLP. Knight Frank LLP is a limited liability partnership registered in England and Wales with registered number OC305934. Our registered office is at 55 Baker Street, London W1U 8AN. We use the term 'partner' to refer to a member of Knight Frank LLP, or an employee or consultant. A list of members names of Knight Frank LLP may be inspected at our registered office. If you do not want us to contact you further about our services then please contact us by either calling 020 3544 0692, email to marketing.help@knightfrank.com or post to our UK Residential Marketing Manager at our registered office (above) providing your name and address.