



**Guide Price**  
**£300,000**

**Freehold**

3x  1x  1x 

**West Park Road,  
Maidstone, Kent ME15**

**OVER 60?**

Secure this property  
for up to **59% less!**

*Wards*  
Helping you move forwards



## Main features

- Chain free house
- Completely refurbished throughout
- Driveway to the front
- Landscaped rear garden, perfect for entertaining
- Set within walking distance to local schools, shops and amenities

## Accommodation

### GROUND FLOOR

Entrance Porch  
 Lobby  
 Lounge: 16'0 x 12'9 (4.88m x 3.89m)  
 Kitchen/Diner: 16'2 x 10'1 (4.93m x 3.08m)  
 Utility Room: 6'8 x 4'0 (2.03m x 1.22m)

### FIRST FLOOR

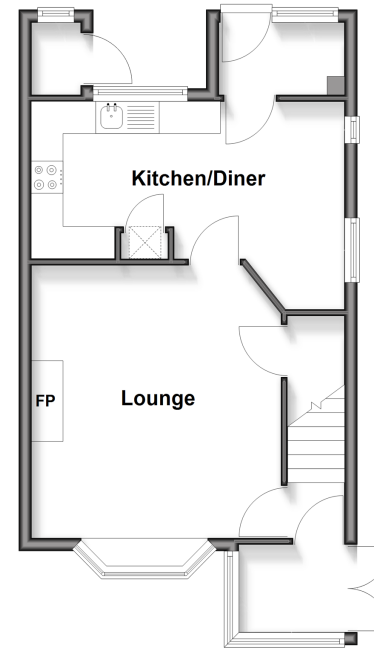
Landing  
 Bedroom 1: 10'7 x 9'7 (3.23m x 2.92m)  
 Bedroom 2: 12'0 x 8'5 (3.66m x 2.57m)  
 Bedroom 3: 8'5 x 7'6 (2.57m x 2.29m)  
 Bathroom

### OUTSIDE

Rear Garden  
 Front Garden  
 Driveway

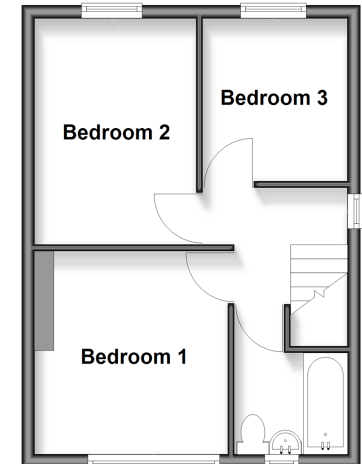
### Ground Floor

Approx. 39.5 sq. metres (425.7 sq. feet)



### First Floor

Approx. 33.5 sq. metres (360.4 sq. feet)



Call Maidstone - 01622 683737 ■ [wardsofkent.co.uk](http://wardsofkent.co.uk)

■ Legal advice should be taken to verify fixtures/fittings, planning, alterations and/or lease details  
 ■ Through a Homewise Home For Life Plan people aged 60+ can secure this property for up to 50% less, by purchasing a Lifetime Lease.

■ Appliances & services are untested, dimensions are approximate and floor plans are not to scale



13159100/20251117/SS1/TB