



Lodges & Caravans

FOR SALE



59 Willow Juliotts Well, Camelford, Valley Truckle, North Cornwall, PL32

ODE
Price £25,000

- Victory Stonewood lodge
- 1 en suite bathroom
- Double glazing throughout
- Decking with storage box
- Built in 2024
- 2 bedrooms, 2 bathrooms
- Excellent condition
- Gas boiler heating
- Located in North Cornwall
- Viewing recommended

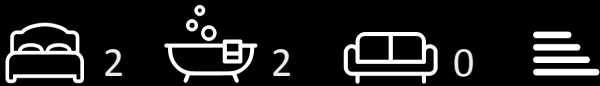
59 Willow Juliotts Well, Camelford, Valley Truckle, North Cornwall PL32 9RF

Nestled in the picturesque setting of Juliotts Well, Camelford, this charming lodge offers a delightful retreat in the heart of North Cornwall. Built in 2024, the Victory Stonewood lodge boasts a modern design and is in excellent condition, making it an ideal choice for those seeking a comfortable and stylish home.

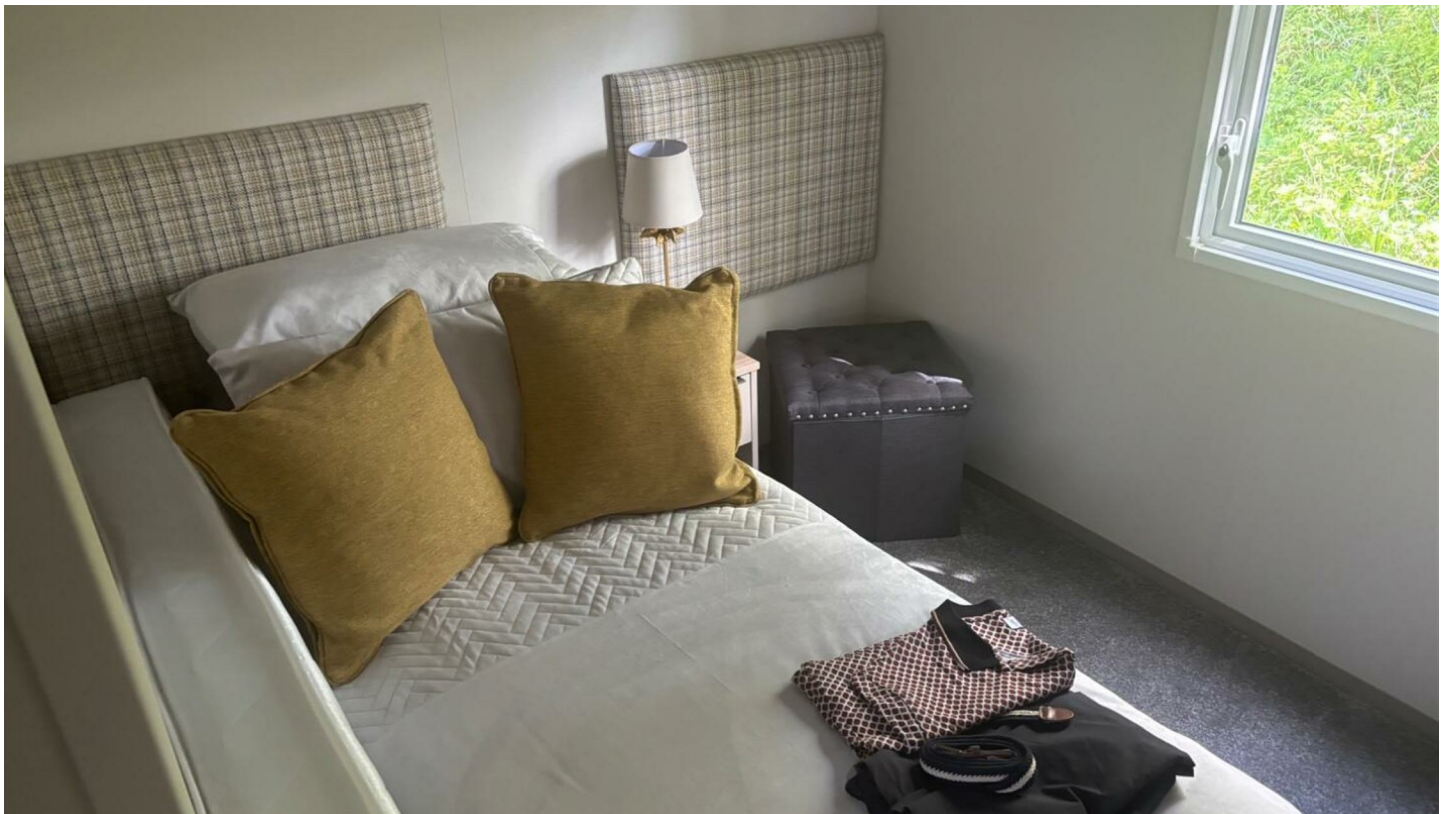
With two well-appointed bedrooms, including a master suite with an en suite bathroom, this property provides ample space for relaxation and privacy. The additional bathroom ensures convenience for both residents and guests alike. Spanning 384 square feet, the lodge is thoughtfully designed to maximise space and functionality.

The property features double glazing, ensuring warmth and energy efficiency throughout the year, complemented by a reliable gas boiler heating system. Outside, you will find a lovely decking area, perfect for enjoying the fresh Cornish air, as well as a storage box for your outdoor essentials.

This lodge is not just a home; it is a lifestyle choice, offering a serene escape while being close to the stunning landscapes and attractions that North Cornwall has to offer. Whether you are looking for a permanent residence or a holiday retreat, this property is sure to impress. Don't miss the opportunity to make this beautiful lodge your own.



Council Tax Band: Exempt







Directions

Viewings

Viewings by arrangement only. Call 07500 874938 to make an appointment.

EPC Rating:

Energy Efficiency Rating		
	Current	Potential
<i>Very energy efficient - lower running costs</i>		
(92 plus) A		
(81-91) B		
(69-80) C		
(55-68) D		
(39-54) E		
(21-38) F		
(1-20) G		
<i>Not energy efficient - higher running costs</i>		
England & Wales	EU Directive 2002/91/EC	