



Kent Road, Windlesham

£725,000



Kent Road, Windlesham, Surrey GU20 6JF

Offered for sale with no onward chain, this spacious three bedroom detached bungalow in Windlesham in need of some modernisation.

FEATURES

- No onward chain
- 1546 sq. ft
- Single storey bungalow
- Short walk to Windlesham Field of Remembrance
- Scope to improve/add value
- Fitted wardrobes

ACCOMMODATION

- Entrance hall
- Sitting room
- Dining room
- Family room
- Kitchen
- Three bedrooms
- Two bath/shower rooms

OUTSIDE

- Driveway
- South easterly facing rear garden with patio
- Garage

EPC RATING

C

LOCAL AUTHORITY/COUNCIL TAX

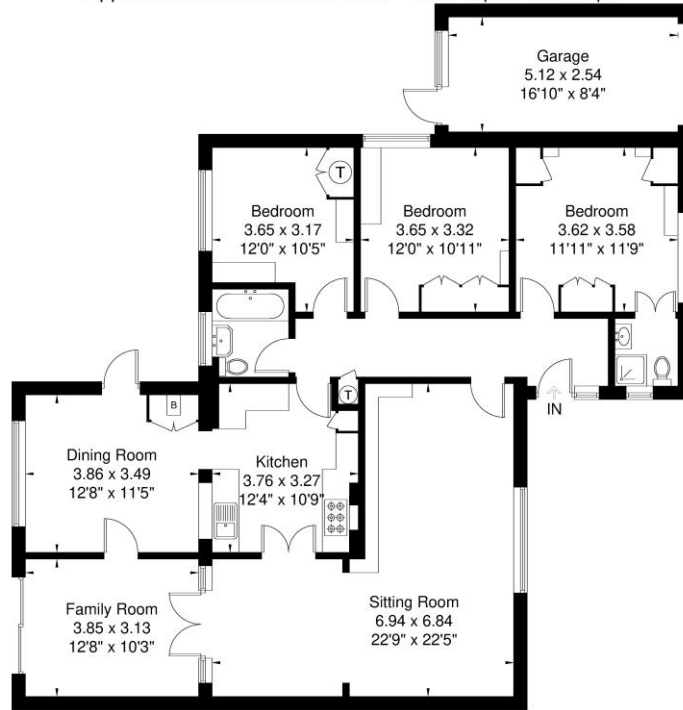
Surrey Heath – Band F





Kent Road

Approximate Gross Internal Area = 143.7 sq m / 1546 sq ft



Ground Floor

Illustration for identification purposes only,
measurements are approximate, not to scale.

Disclaimer: We wish to inform prospective purchasers that we have prepared these sales particulars as a general guide. We have not carried out a detailed survey, nor tested the services, appliances and specific fittings. Room sizes are approximate and rounded: they are taken between internal wall surfaces and therefore include cupboards / shelves, etc. Accordingly, they should not be relied upon for carpeting, curtains / blinds and kitchen equipment, whether fitted or not, are deemed removable by the vendor unless specifically itemized within these.



The Old Dairy, 7 Updown Hill, Windlesham, Surrey GU20 6AF
enquiries@newtonrowe.co.uk | 01276 986900