



**Etive, Plot 370**  
**Fairview Heights,**  
**Inverness, IV2**  
**6JW**

Fixed Asking Price  
£358,000

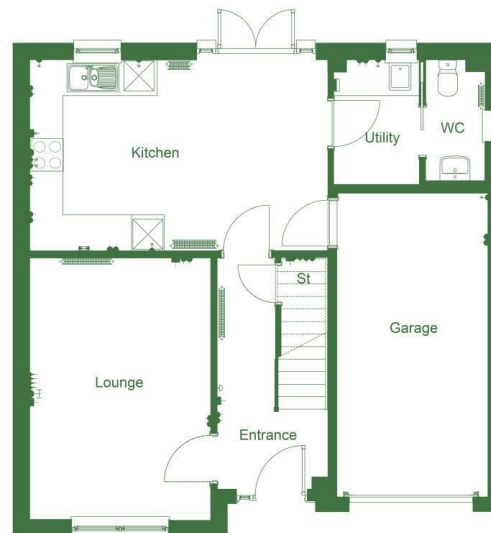


The Etive is an exceptional home ideal for family living comprising 4 bedrooms and integral garage.

The open plan Ashley Ann kitchen/ dining room features a selection of Bosch appliances with French doors leading to the turfed rear garden. On the ground floor, you will also find a cloakroom, front aspect lounge and utility room.

Upstairs, Bedroom 1 benefits from en suite shower room along with fitted wardrobe facilities. The family bathroom can also be found on this level, which features a shower over the bath and fitted vanity units to create a sleek and modern finish.

- Open plan kitchen/dining room
- Luxury kitchen by Ashley Ann
- Front aspect lounge
- En suite shower room to bedroom 1
- Energy efficient air source heating
- French doors leading to garden patio
- Selection of Bosch appliances
- Integral garage
- Fitted wardrobes to bedrooms 1 & 2
- 10 year NHBC warranty



Extras: Add text here

Services: Add text here

Council Tax: New Build

Floor Area: 1270.00 sq ft

Date of Entry: Add text here

Viewing: Don't delay – get in touch with Tailormade Moves today to arrange a viewing

The Greenhouse Beechwood  
Business Park  
Inverness  
Highland  
IV2 3BL

E:  
[info@tailormademoves.co.uk](mailto:info@tailormademoves.co.uk)  
T: 01463 233218

