



St. James Court, Voltaire Avenue

Salford



Offers Over £130,000

St. James' Court

Salford

Are you looking for a SPACIOUS one bedroom apartment within walking distance of Salford Royal Hospital? Well look no further! Located in a purpose built block off flats just off Lancaster road, and benefitting from a modern three-piece bathroom, this first floor apartment is sure to be popular!

Council Tax band: A

Tenure: Leasehold

- Spacious One Bedroom Apartment Just a Short Walk from Salford Royal Hospital
- Located on a Popular Development
- Large 15FT Lounge Diner and a New Modern Fitted Kitchen
- Modern Three-Piece Bathroom
- Double Bedroom with Views Over the Communal Area
- Boasts Plenty of Storage Throughout
- Within Walking Distance of Well-Kept Local Parks and Excellent Transport Links to Salford Quays/Media City and the City Centre
- Perfect First Time Home or Investment
- Early Viewing is a Must!



HILLS

Entrance Hallway

Lounge/Diner

15' 5" x 12' 2" (4.70m x 3.70m)

Kitchen

9' 2" x 7' 3" (2.80m x 2.20m)

Bathroom

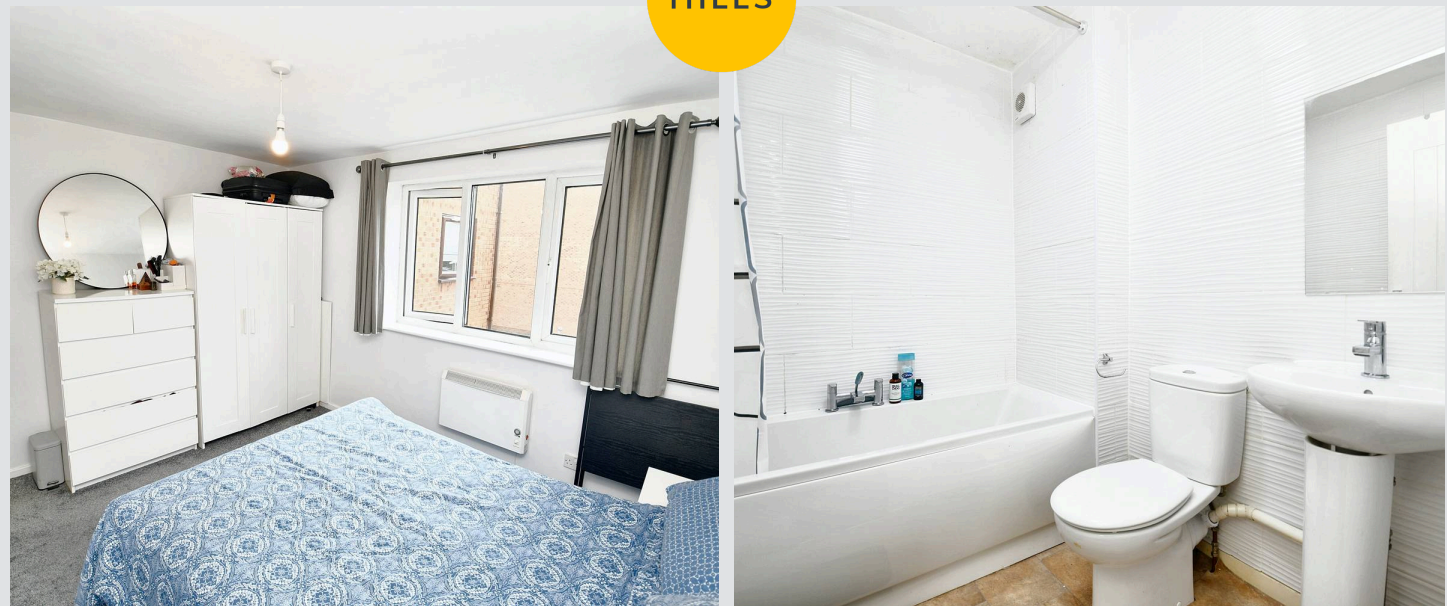
6' 7" x 5' 11" (2.00m x 1.80m)

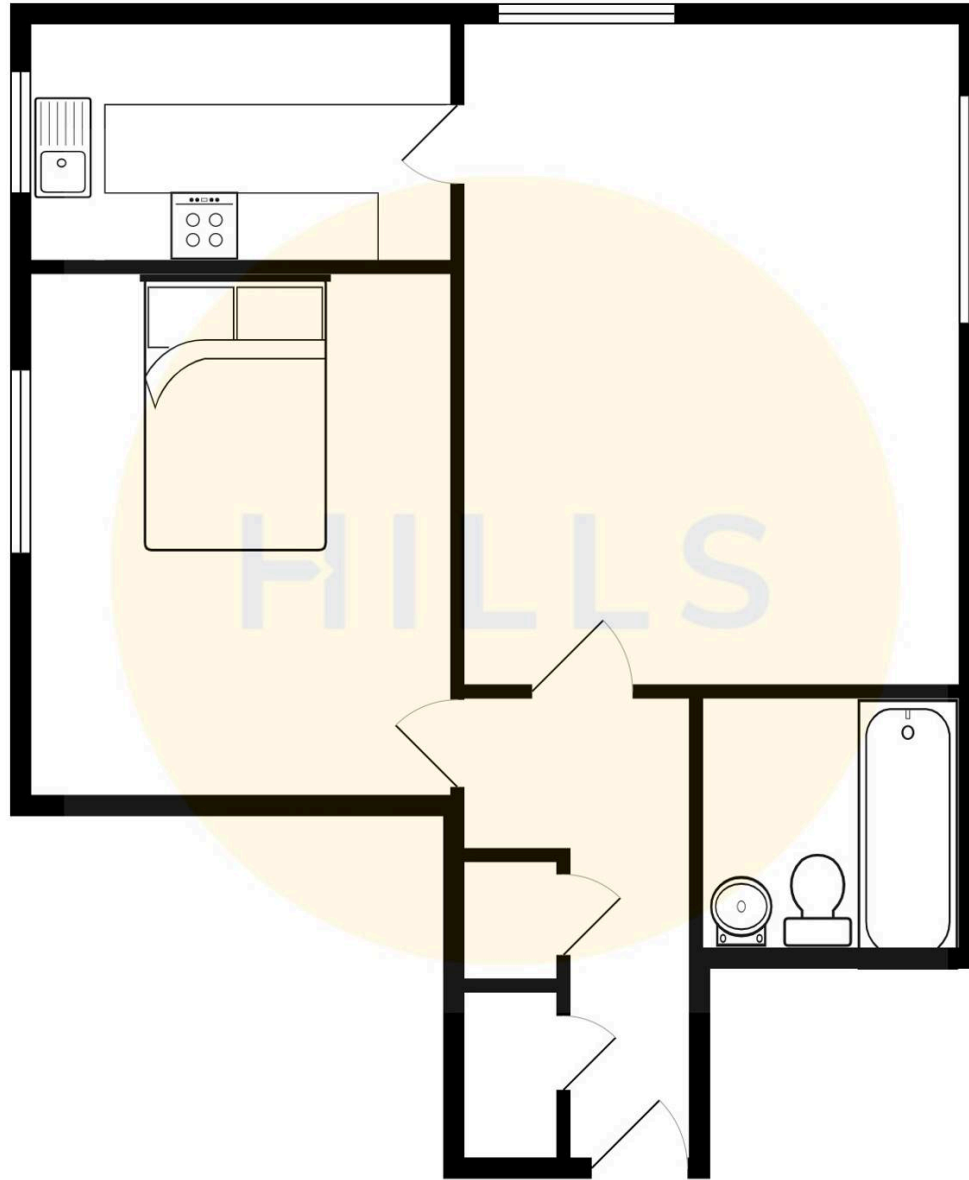
Bedroom

11' 10" x 9' 2" (3.60m x 2.80m)



HILLS







Hills | Salfords Estate Agent

Hills Residential, Sentinel House Albert Street - M30 0SS

0161 707 4900

sales@hills.agency

www.hills.agency/



By law, we are required to conduct anti-money laundering checks on all potential buyers and sellers. In line with HMRC guidelines, our trusted partner, Coadjute, will securely manage these checks on our behalf. A non-refundable fee of £45 + VAT per person will apply, and Coadjute will handle the payment. Once an offer is accepted, Coadjute will send a secure link for you to complete the biometric checks. These checks must be completed before we can send the memorandum of sale to all parties. PLEASE NOTE: The Agent has not tested any equipment, fixtures, fittings or services so cannot verify that they are in working order or fit for the purpose. References to the properties tenure are based on information supplied by the seller. You are advised to check the availability of this property before travelling any distance to view. Every effort has been made to ensure these particulars are correct and not misleading but their accuracy is not guaranteed nor do they form part of any contract.