

Cubitt Building , Gatliff Road , Grosvenor Waterside, Sloane Square SW1W 8QL

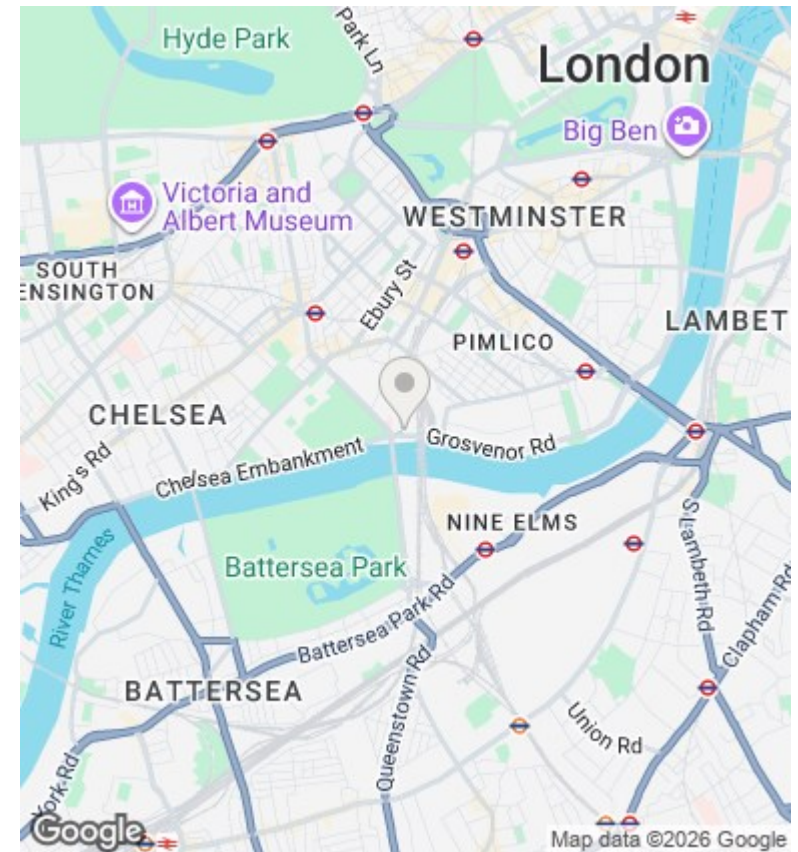
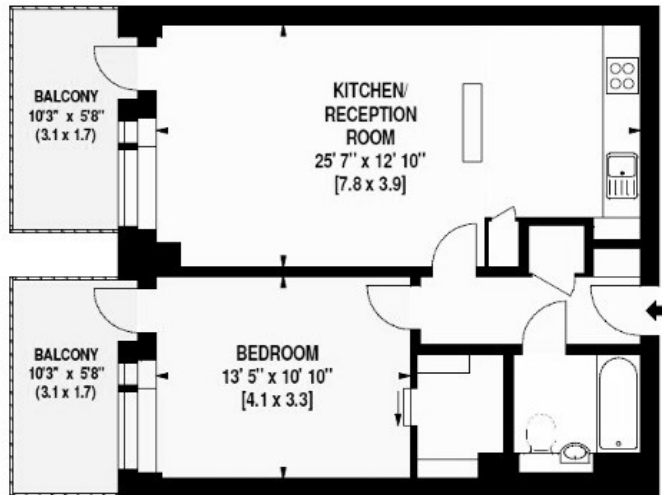
£675,000

- 24H CONCIERGE
- UNDER FLOOR HEATING
- RECENTLY REFURBISHED

- VIDEO VIEWING AVAILABLE
- SOUTH EAST FACING
- WALKING DISTANCE TO SLOANE SQUARE , KINGS ROAD AND VICTORIA

- 1 BEDROOM 1 BATHROOM 1 LIVING ROOM WITH OPEN PLAN KITCHEN
- 2 PRIVATE BALCONIES
- MOMENTS AWAY FROM BATTERSEA PARK

Gross Internal Area: 57 Sq. metres
614 Sq. feet



Viewings

Viewings by arrangement only.
Call 02077225022 to make an appointment.

Council Tax Band

E

EPC Rating:

Energy Efficiency Rating		
	Current	Potential
<i>Very energy efficient - lower running costs</i>		
(92 plus) A		
(81-91) B		
(69-80) C		
(55-68) D		
(39-54) E		
(21-38) F		
(1-20) G		
<i>Not energy efficient - higher running costs</i>		
England & Wales	EU Directive 2002/91/EC	