

# 36 Weald Hall Lane

Thornwood, Epping

Guide price £750,000 - £775,000 on this superb 'forever' family home with five bedrooms plus a beautiful private garden - welcome to Weald Hall Lane. Nestled within Thornwood Common, just a short drive to Epping, this move-in ready home has fantastic potential to add your own stamp. Council Tax band: E

Tenure: Freehold

- Five bedroom family home
- Driveway
- Private spacious garden
- Jack and Jill ensuite
- Short drive to Epping & the M11
- Opportunity to extend (STP)



**Hallway**

**Lounge**

11' 11" x 13' 6" (3.62m x 4.12m)

**Kitchen / Sitting Room**

17' 7" x 23' 0" (5.36m x 7.00m)

**Dining Room**

11' 11" x 11' 8" (3.62m x 3.56m)

**Study**

9' 5" x 7' 5" (2.86m x 2.25m)

**Conservatory**

17' 1" x 7' 2" (5.20m x 2.18m)

**WC**

**Bedroom**

9' 11" x 11' 11" (3.02m x 3.62m)

**Bedroom**

11' 11" x 11' 7" (3.63m x 3.53m)

**Bedroom**

8' 8" x 11' 3" (2.63m x 3.44m)

**Jack and Jill ensuite shower room**

**Bedroom**

8' 8" x 14' 2" (2.63m x 4.32m)

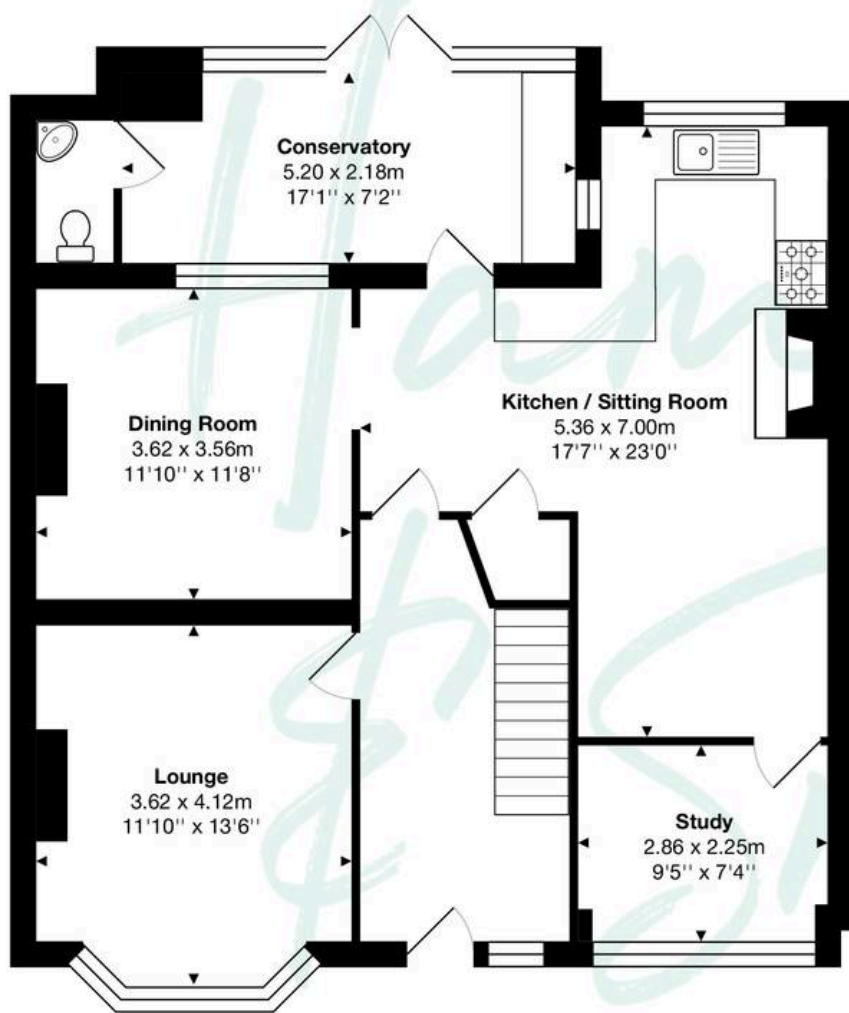
**Bedroom**

8' 5" x 7' 8" (2.57m x 2.34m)

**Bathroom**







Ground Floor



First Floor

Total Area: approx. 158.7 m<sup>2</sup> ... 1708 ft<sup>2</sup>

THE FLOORPLAN IS FOR ILLUSTRATIVE PURPOSES ONLY AND IS NOT TO SCALE.  
 Measurements and features are approximate and may differ from the actual property. Verify all details independently; no liability is accepted for errors or omissions.

Property marketing provided by [www.fotomarketing.co.uk](http://www.fotomarketing.co.uk)