



Connells

Newton Road
Bletchley Milton Keynes



Property Description

Offered to the market with no onward chain and located on the highly desired 'Newton Road' is this spacious well-presented two bedroom ground floor apartment. This property is an ideal first time purchase or investment buy, with its location offering easy access to local amenities and transport links such as Bletchley main line train station and the A5 and M1 road links. This property also benefits from an allocated parking space.

Accommodation comprises entrance hall, good sized lounge/diner, kitchen, master bedroom with ensuite shower room, second bedroom and a family bathroom. Outside there is a well-maintained communal hallway and an allocated parking space.

Entrance Hall

Lounge/Diner

16' 8" x 14' 3" (5.08m x 4.34m)

Kitchen

10' 11" x 6' 11" (3.33m x 2.11m)

Bedroom One

19' 8" x 11' 1" (5.99m x 3.38m)

En-Suite

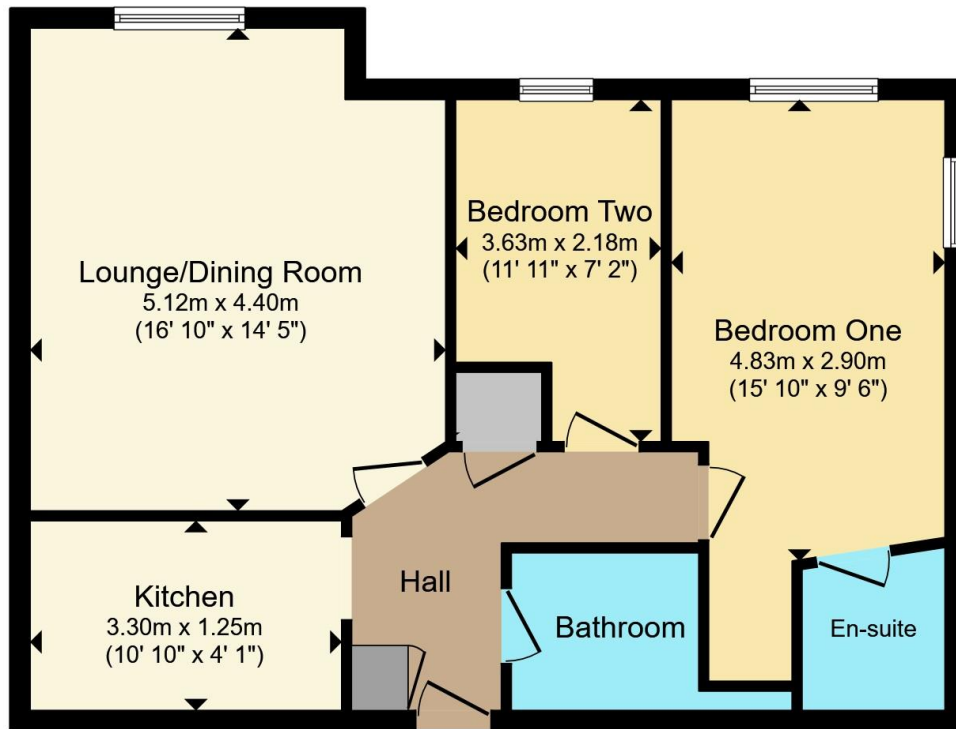
Bedroom Two

9' x 8' (2.74m x 2.44m)

Bathroom







Total floor area 65.2 m² (702 sq.ft.) approx

This floor plan is for illustrative purposes only. It is not drawn to scale. Any measurements, floor areas (including any total floor area), openings and orientation are approximate. No details are guaranteed, they cannot be relied upon for any purpose and they do not form part of any agreement. No liability is taken for any error, omission or misstatement. A party must rely upon its own inspection(s). Powered by www.propertybox.io



To view this property please contact Connells on

T 01908 375 241
E bletchley@connells.co.uk

188 Queensway Bletchley
 MILTON KEYNES MK2 2SW

EPC Rating: C Council Tax Band: B

Service Charge: 1039.00

Ground Rent: 150.00

Tenure: Leasehold

view this property online connells.co.uk/Property/BLE311680

This is a Leasehold property with details as follows; Term of Lease 125 years from 01 Jan 2007. Should you require further information please contact the branch. Please Note additional fees could be incurred for items such as Leasehold packs.



1. MONEY LAUNDERING REGULATIONS Intending purchasers will be asked to produce identification documentation at a later stage and we would ask for your co-operation in order that there will be no delay in agreeing the sale. 2. These particulars do not constitute part or all of an offer or contract. 3. The measurements indicated are supplied for guidance only and as such must be considered incorrect. Potential buyers are advised to recheck measurements before committing to any expense. 4. We have not tested any apparatus, equipment, fixtures, fittings or services and it is in the buyers interest to check the working condition of any appliances.

Connells Residential is registered in England and Wales under company number 1489613, Registered Office is Cumbria House, 16-20 Hockliffe Street, Leighton Buzzard, Bedfordshire, LU7 1GN. VAT Registration Number is 500 2481 05.

See all our properties at www.connells.co.uk | www.rightmove.co.uk | www.zoopla.co.uk

Property Ref: BLE311680 - 0010