

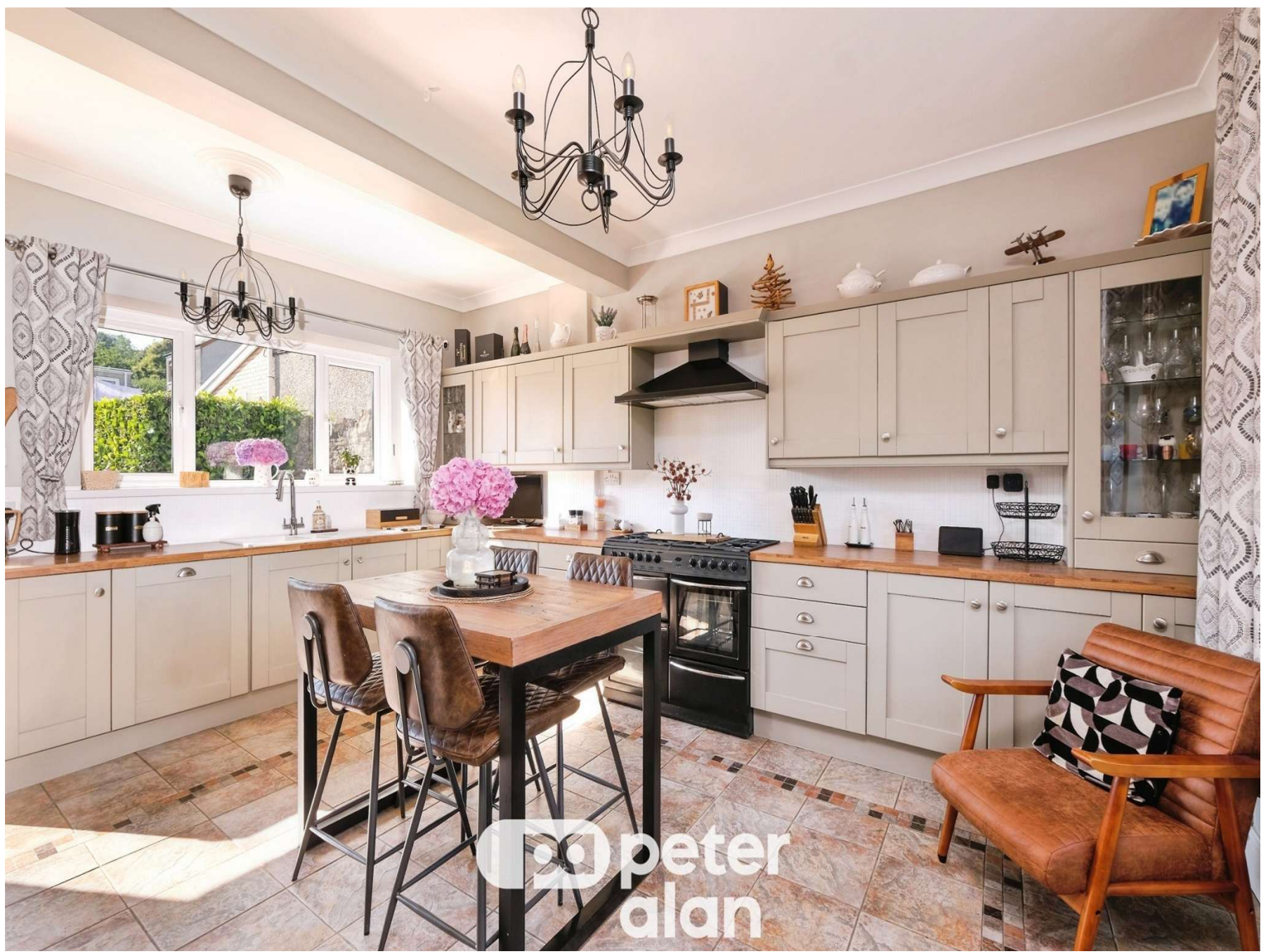


South Parade offers in the region of £475,000

- Close to public transport
- Private driveway
- Versatile bedrooms
- Gym / Bar
- EPC Rating: D



 5  1  2



About the property

A stunning executive family home set on a generous plot offering four bedrooms and separate dressing room, spacious reception room a beautifully kitchen and a luxurious bathroom with a roll top

Accommodation

Entrance

Kitchen

17' 6" x 17' 4" (5.33m x 5.28m)

Dining Room/ Snug

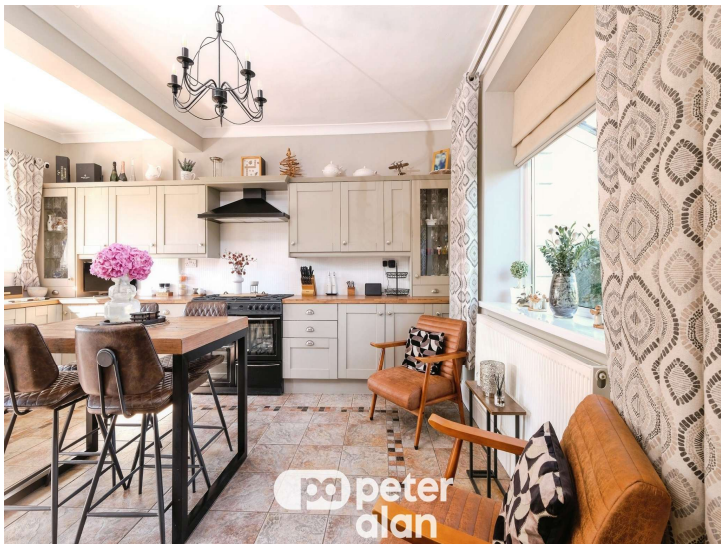
17' 4" x 10' 2" (5.28m x 3.10m)

Living Room

21' 10" x 14' 11" (6.65m x 4.55m)

Bedroom One

16' x 10' 2" (4.88m x 3.10m)



12' 7" x 7' 3" (3.84m x 2.21m)

Bedroom Five /Dressing Room

9' 9" x 9' 7" (2.97m x 2.92m)

Bathroom

12' 6" x 8' 10" (3.81m x 2.69m)

Bedroom Two

15' 11" x 10' 10" (4.85m x 3.30m)

Bedroom Three

12' 6" x 10' 4" (3.81m x 3.15m)

Bedroom Four

Floorplan



Total floor area 180.7 m² (1,945 sq.ft.) approx

This floor plan is for illustrative purposes only. It is not drawn to scale. Any measurements, floor areas (including any total floor area), openings and orientation are approximate. No details are guaranteed, they cannot be relied upon for any purpose and they do not form part of any agreement. No liability is taken for any error, omission or misstatement. A party must rely upon its own inspection(s). Powered by www.propertybox.io

Important Information

Note while we endeavour to make our sales details accurate and reliable, if there is any point which is of particular interest to you, please contact the office and we will be pleased to confirm the position for you. We have not personally tested any apparatus, equipment, fixtures, fittings or services and cannot verify they are in working order or fit for their purposes. Nothing in these particulars is intended to indicate that carpets or curtains, furnishings or fittings, electrical goods (whether wired or not). Gas fires or light fittings or any other fixtures not expressly included form part of the property offered for sale. This computer generated Floorplan, if applicable, is intended as a general guide to the layout and design of the property. It is not to scale and should not be relied upon for dimensions. Tenure: We cannot confirm the tenure of the property as we have not had access to the legal documents. The buyer is advised to obtain verification from their solicitor or surveyor.