



FOSTER  
& CO.



# Goldstone Crescent

Hove, BN3 6LR

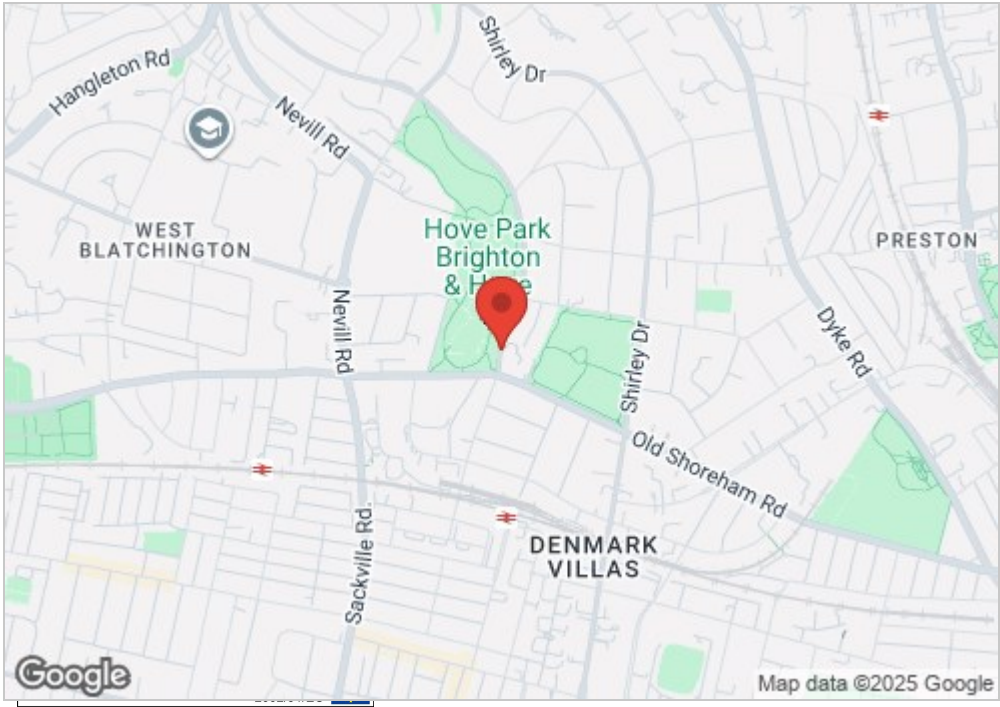
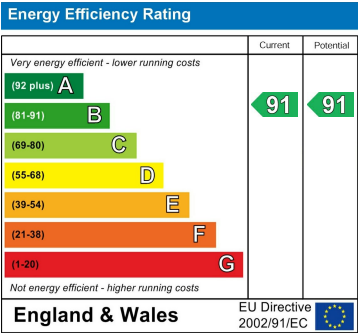
£3,000 Per month

This stunning three-bedroom apartment is a true gem, featuring a spacious and inviting entrance hall that opens into a large living/dining area and kitchen. The highlight of the room is a magnificent skylight with retractable blinds and built-in LED lights, creating a bright and airy atmosphere. The stylish media wall, complete with an electric fireplace, adds a cozy touch, while full-height double doors lead out to a generous balcony offering breathtaking views of the park and sea.

Unfurnished, available now, long term.

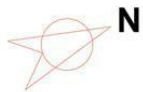
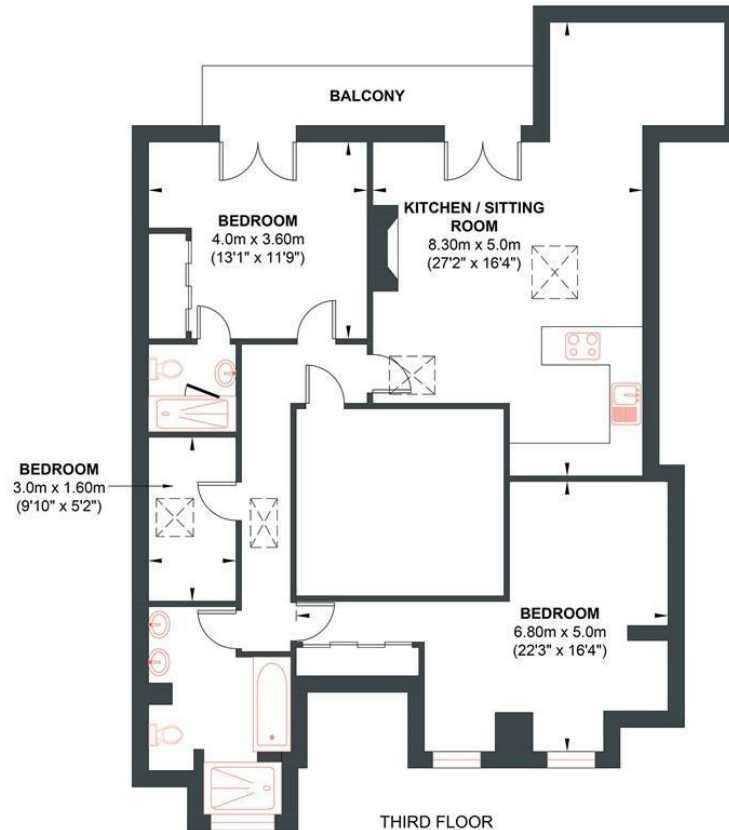


- Allocated off road parking
- Balcony
- Top Floor
- 3 Bedrooms
- 2 Bathrooms
- Views over Hove Park
- Lift
- Available now
- EPC = B



# GOLDSTONE CRESCENT

Approx. Gross Internal Floor Area 94.34 sq m / 1015.46 sq ft  
Illustration for identification purposed only, measurements are approximate, not to scale.



**THIRD FLOOR**  
**Approximate Floor Area**  
1015.46 sq ft  
(94.34 sq m)

Foster & Co and their clients give notice that:

These sales particulars do not constitute any part of an offer of contract and are for guidance for prospective purchases only and should be not relied upon as a statement of fact.

We are not to be held responsible for material information that has not been given to us by our client at the time of marketing.

All measurements are approximate





