



273 Old Shoreham Road, Portslade
£525,000

**MANSELL
McTAGGART**
Trusted since 1947

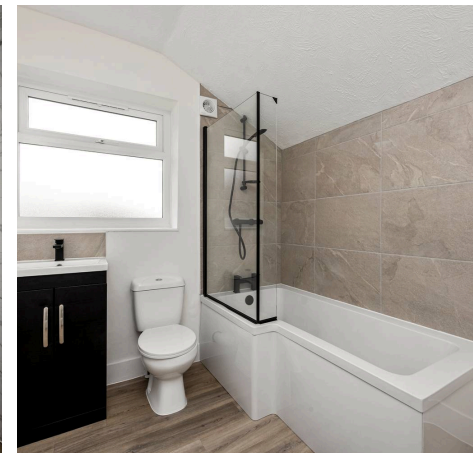
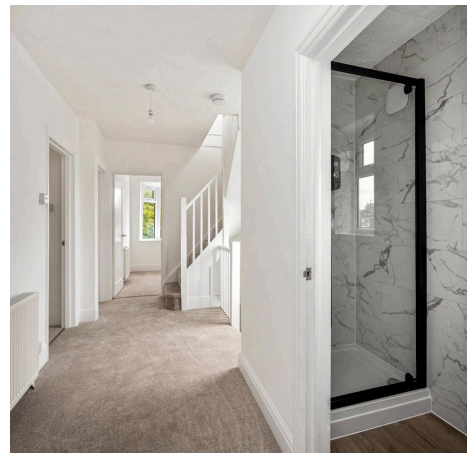
273 Old Shoreham Road

Portslade, Brighton

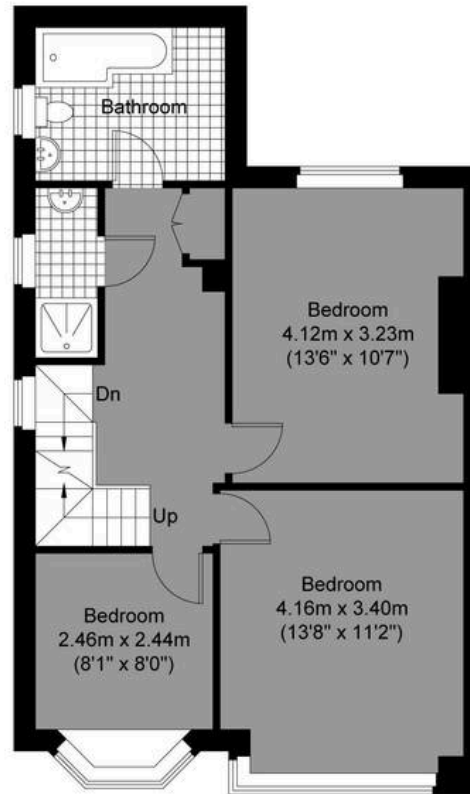
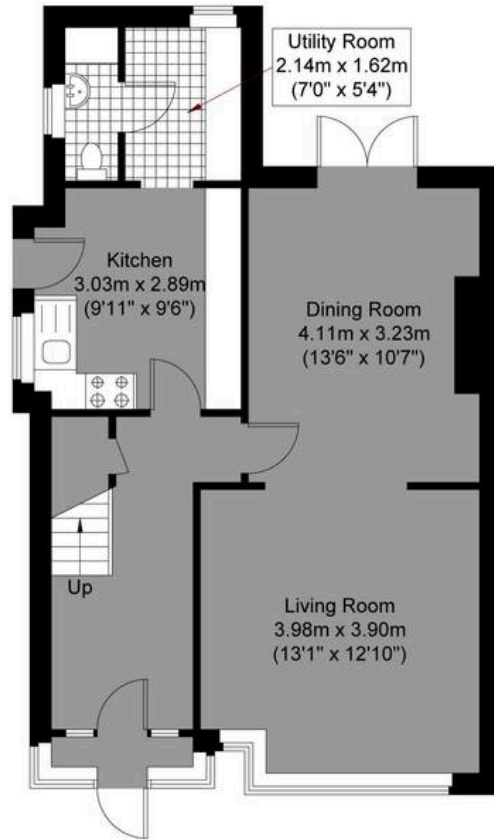
Council Tax band: B

Tenure: Freehold

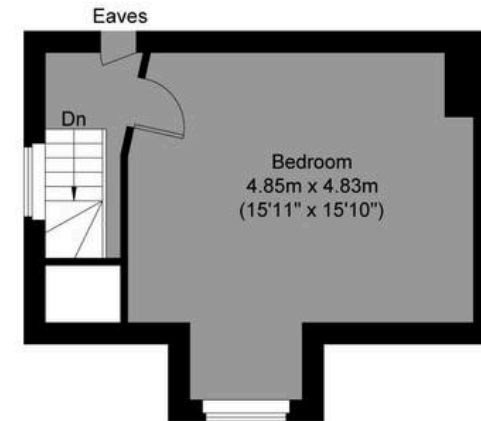
- Four Bedroom Semi-Detached Family Home
- Recently Refurbished And Ready To Move Into
- Sold With No Onwards Chain
- Off Road Parking For Multiple Cars
- Brand New Kitchen & Bathroom Suites
- Through Lounge Diner With Double Doors Out To Garden
- Accommodation Over Three Stories
- South Facing Garden With Raised Decking Area
- Walking Distance To Seafront, Portslade Train Station & Hove Seafront



Approximate Gross Internal Area= 131.91 sq m / 1419.86 sq ft



**MANSELL
McTAGGART**
— Trusted since 1947 —



Old Shoreham Road

Ground Floor
Approximate Floor Area
581.36 sq ft (54.01 sq m)

First Floor
Approximate Floor Area
577.59 sq ft (53.66 sq m)

Second Floor
Approximate Floor Area
260.91 sq ft (24.24 sq m)



Illustration for identification purposes only, measurements are approximate, not to scale.

© Mansell McTaggart



Mansell McTaggart Hove

170 Church Road, Hove - BN3 2DJ

01273 044929

hove@mansellmctaggart.co.uk

www.mansellmctaggart.co.uk/branch/hove/

