

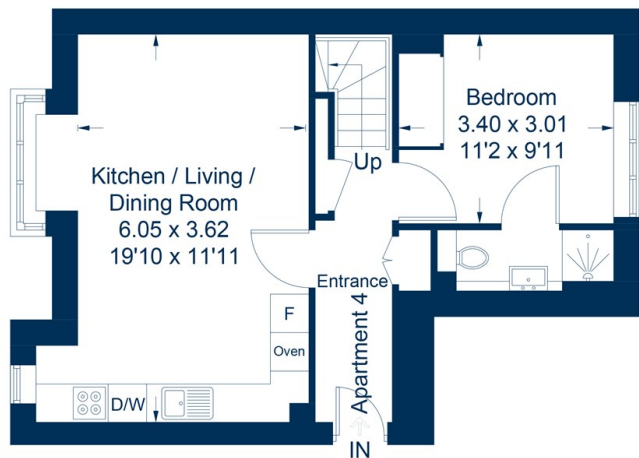


4 Scholars Corner, 26 Arnolds Way, Oxford, OX2 9JB

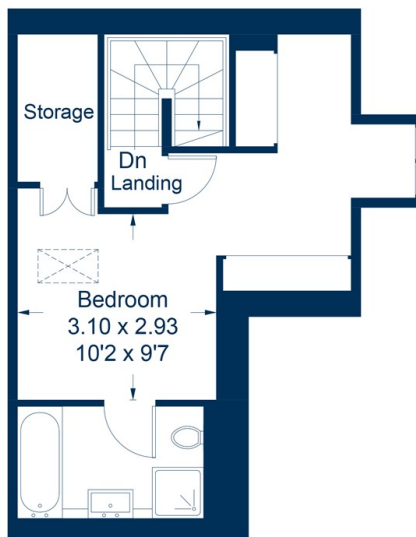
£1,900 PCM - 8th July 2026.

- Duplex apartment
- Two double bedrooms
- Parking for 1 car
- Mains gas electricity and water
- Unfurnished
- Two ensuite bathrooms
- EPC rating B
- Integrated appliances
- Gas CH
- Council Tax banding C

Approximate Gross Internal Area
 First Floor = 45.4 sq m / 489 sq ft
 Second Floor = 32.9 sq m / 354 sq ft
 Total = 78.3 sq m / 843 sq ft



First Floor



Second Floor

This plan is for layout guidance only. Not drawn to scale unless stated. Windows and door openings are approximate. Whilst every care is taken in the preparation of this plan, please check all dimensions, shapes and compass bearings before making any decisions reliant upon them.
 © CJ Property Marketing Ltd



Directions

Viewings

Viewings by arrangement only. Call 01865 515900 to make an appointment.

Council Tax Band

C

EPC Rating:

B

Energy Efficiency Rating		Current	Potential
<i>Very energy efficient - lower running costs</i>			
(92 plus)	A		
(81-91)	B	84	84
(69-80)	C		
(55-68)	D		
(39-54)	E		
(21-38)	F		
(1-20)	G		
<i>Not energy efficient - higher running costs</i>			
England & Wales		EU Directive 2002/91/EC	