



Tower Road, TW1

£6,000 Per calendar month

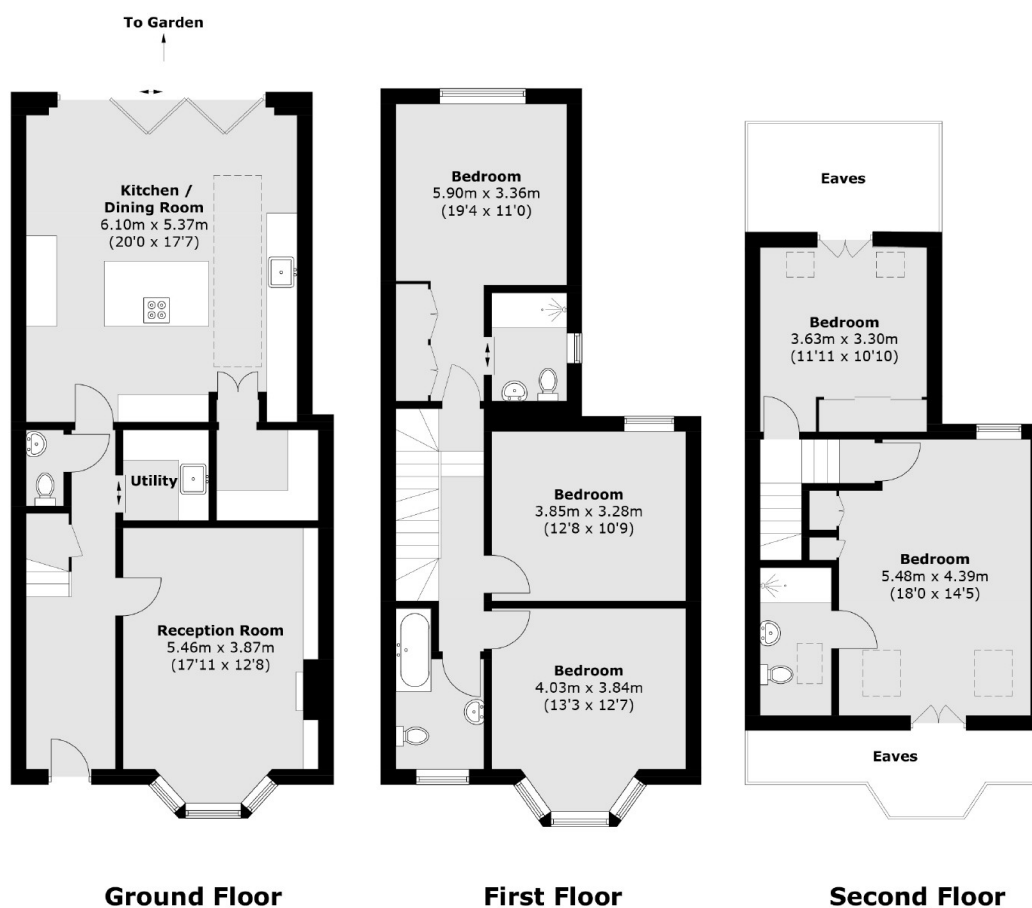
This immaculately presented property has been painstakingly renovated throughout. The large open plan kitchen boasts a walk in pantry and fitted appliances, with bifolds door opening onto the landscape garden. To the front of the property is a separate reception room with underfloor heating, downstairs WC and utility room.

Tower Road is ideally positioned just yards from the picturesque Radnor Gardens and River Thames as well as having Strawberry Hill mainline station with links to London Waterloo close at hand.

Features

Immaculately Presented
Renovated Throughout
Five Double Bedrooms
Open Plan Kitchen Reception
Close To Strawberry Hill
Available Immediately

Tower Road, Strawberry Hill, TW1



Total area (approx.): 179.7 sq. m (1,934.2 sq. ft)
(Excluding Eaves)