



**POOLE  
TOWNSEND**

# Ash Court, Birkrigg Park, Ulverston

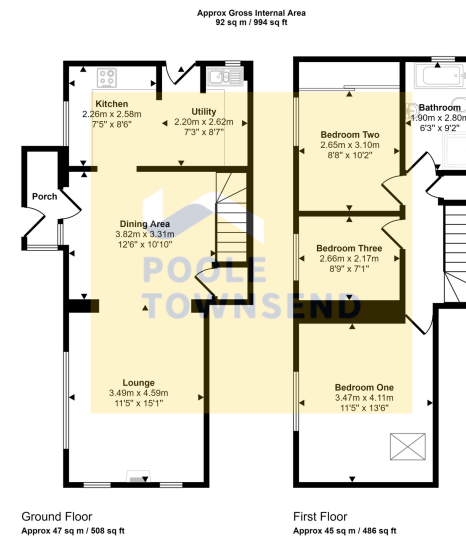
£232,000

3 2 1



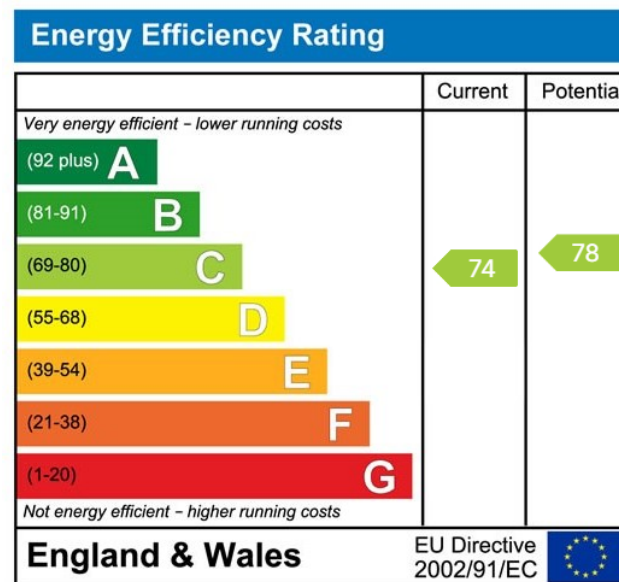
- Fabulous End Terrace Family Home
- Sought After Rural Location
- Lounge And Separate Dining Room
- Front And Rear Gardens
- Useful Utility Room
- Views across Open Countryside
- Freehold
- Council Tax Band B





This floorplan is only for illustrative purposes and is not to scale. Measurements of rooms, doors, windows, and any items are approximate and no responsibility is taken for any error, omission or mis-statement. Icons of items such as bathroom suites are representations only and may not look like the real items. Made with Made Snappy 360.

Occupying a peaceful position within a modern residential development, this fabulous end-terraced home is available at ?? % of market value under the low-cost affordable ownership scheme, presenting an excellent opportunity for eligible buyers to step onto the property ladder. Thoughtfully designed for modern living, the accommodation is bright, spacious, and stylish throughout. The ground floor features a welcoming living room with a wood-burning stove, flowing seamlessly into the dining room and a separate kitchen with utility area. Upstairs, there are three generous bedrooms and a contemporary family bathroom. Adding to its appeal, the property benefits from off-road parking for up to three cars and an enclosed garden with lawn, patio, and decking, perfect for outdoor dining, entertaining, or simply relaxing in the sunshine.



Visit us at  
[www.pooletownsend.co.uk](http://www.pooletownsend.co.uk)  
[enquiries@pooletownsend.co.uk](mailto:enquiries@pooletownsend.co.uk)

We are open  
 Monday – Friday 9.00 – 5.00  
 Saturday 9.00 – 1.00

Barrow 01229 811811  
 Ulverston 01229 588111  
 Grange 015395 33316  
 Kendal 01539 734455  
 Milnthorpe 015395 62044