



Hallfield Estate, W2

£350,000

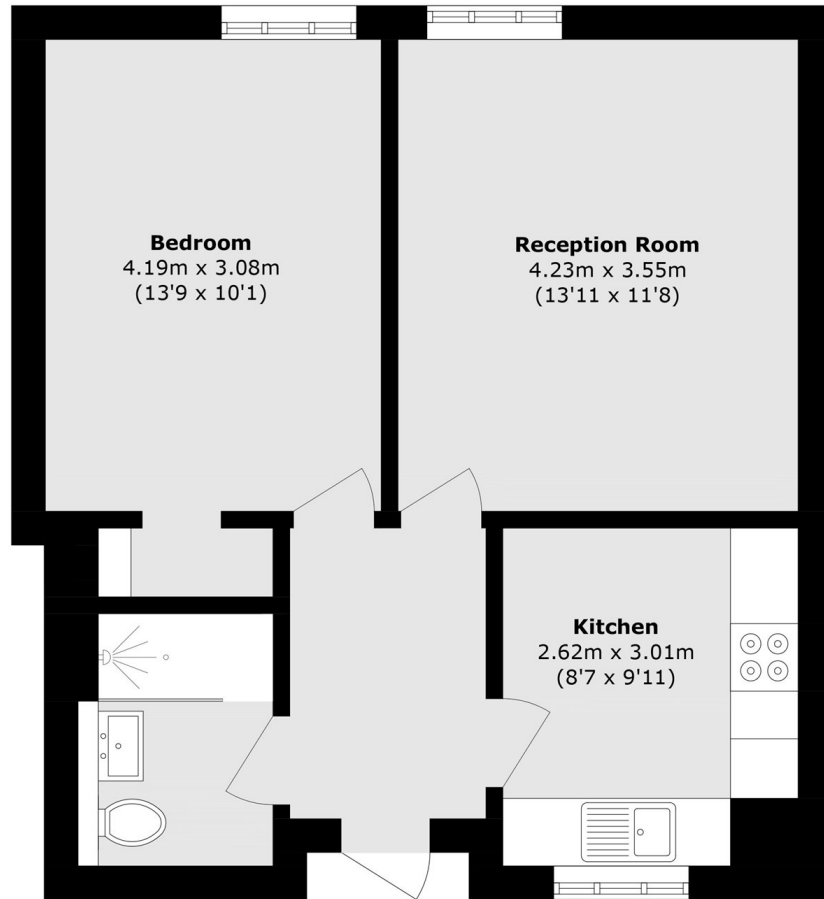
A well-presented first floor apartment (with lift) in a purpose built apartment. With a separate kitchen, spacious reception room with dining space and built-in storage in the bedroom, this is an ideal first time purchase or long term investment.

The Hallfield Estate is a short walk away from Paddington station giving convenient access across London and to Heathrow, and the green spaces of Hyde Park are a short walk away. The Whiteley's development is close by, with the local area benefitting from the large scale regeneration project.

Features

- One Double Bedroom
- Separate Kitchen
- Good Condition
- Communal Gardens
- Close To Paddington
- Near Hyde Park

Hallfield Estate, London, W2



Total area (approx.): 46.7 sq. m (502.7 sq. ft)