



## Leinster Gardens, W2

£600,000

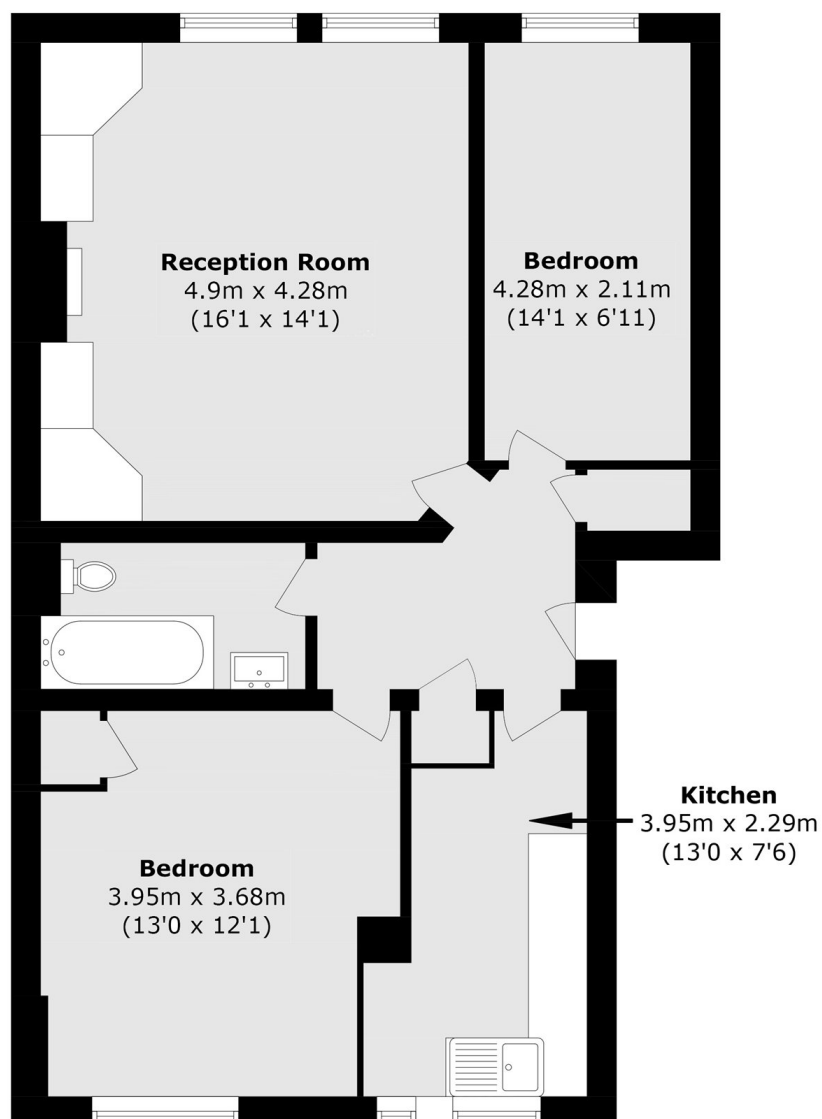
An unmodernised apartment, which will be an ideal project for anyone looking to create their own home or hold as a long term investment. On the first floor (with lift) of a purpose built building, with two bedrooms, a separate kitchen, reception room and storage unit in the basement.

Leinster Gardens is ideally located close to Paddington Station, giving access across London and to Heathrow as well as Bayswater, currently undergoing large scale regeneration. There's plenty of local shops and restaurants to choose from and Hyde Park is close by.

### Features

- Two Bedrooms
- Separate Kitchen
- Unmodernised
- Storage Room
- Lift
- Long Lease

# Leinster Gardens, London, W2



Total area (approx.): 65.6 sq. m (706.1 sq. ft)