



Keith
Ashton

Selwood Road,
Brentwood



17 SELWOOD ROAD

Brentwood, CM14 4PX

Guide Price £900,000 - £950,000

****Guide Price £900,000 - £925,000**** We are pleased to present this attractive detached family home, ideally located on the sought-after west side of Brentwood. Well-presented throughout, the property offers spacious and flexible accommodation, featuring four bedrooms and three contemporary bathrooms.

Situated within the catchment area of the well-regarded St Peter's Church of England Primary School and just a short distance from Brentwood Station, the home is perfectly positioned for families and commuters alike. Excellent transport links provide easy access to London and surrounding areas, while nearby country parks and leisure facilities offer a wealth of outdoor and recreational opportunities.

- IMPRESSIVE DETACHED FAMILY HOME
- WITHIN ST PETERS C of E CATCHMENT

- WELL PRESENTED THROUGHOUT
- COUNTRY PARKS NEARBY

- FOUR BEDROOMS
- EASY REACH OF BRENTWOOD STATION

- THREE BATHROOMS
- AMPLE OFF-STREET PARKING



Description

The internal accommodation begins with an enclosed porch opening into a welcoming entrance hall. To the rear of the property is a spacious kitchen/diner, fitted with contemporary wall and base units complemented by contrasting worktops and a breakfast bar. The dining area is filled with natural light from a large window overlooking the garden, with French doors providing direct access to the outside. A useful utility room adjoins the kitchen.

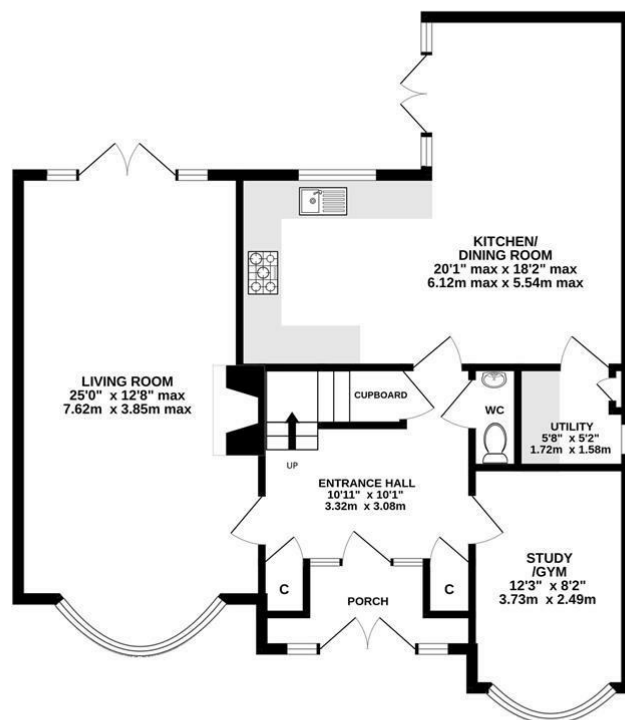
A comfortable and generously sized living room extends from the front to the rear of the house, featuring a large bay window to the front and French doors opening onto the garden. An additional reception room offers versatile space, ideal for use as a study or home gym, while a ground-floor cloakroom completes this level.

To the first floor, the landing provides access to all rooms. There are four well-proportioned bedrooms, two of which benefit from en-suite shower rooms, along with a modern family bathroom.

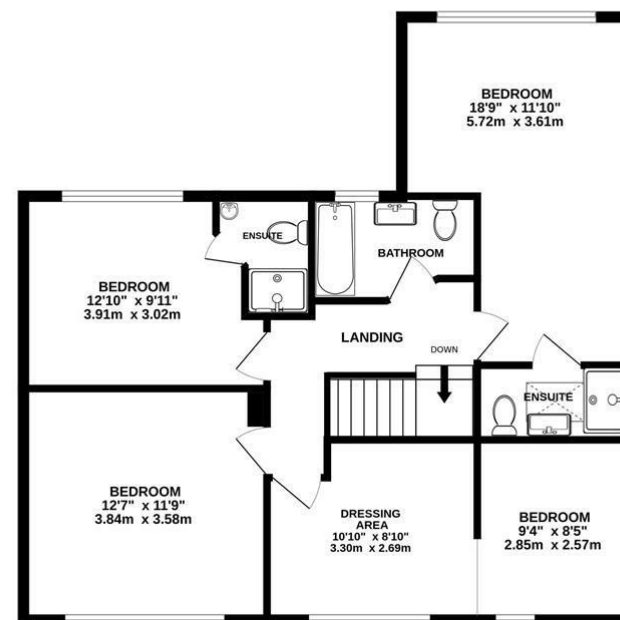
Externally, the rear garden is predominantly laid to lawn, while to the front, a block-paved driveway provides ample off-street parking.



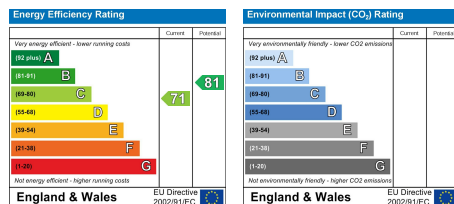
GROUND FLOOR
853 sq.ft. (79.3 sq.m.) approx.



1ST FLOOR
800 sq.ft. (74.3 sq.m.) approx.



TOTAL FLOOR AREA : 1653 sq.ft. (153.6 sq.m.) approx.
Measurements are approximate. Not to scale. Illustrative purposes only
Made with Metropix ©2025



SERVICES:

Local Authority: Brentwood
Council tax band: F
Post code: CM14 4PX

VIEWING:

Strictly by prior arrangement with Keith Ashton Estate Agents

OPENING HOURS:

Monday to Friday: 8.45AM - 6.30PM | Saturdays: 9AM - 5.30PM | Sundays: 10AM - 2PM

MORTGAGE INFORMATION: We offer the additional facility of an in-house Independent Financial Adviser who will access all mortgage lenders with the purpose of providing you with the benefit of choice. For quotations or comparables please call 01277 260858 or visit our interactive website at www.mortgagebusiness.net



We the Agent have not tested any apparatus, fittings or services for this property. The plot size is intended merely as a guide and has not been officially measured or verified by the Agent. Photographs are for illustration only and may depict items which are not for sale or included in the sale of the property. As part of the service we offer we may recommend ancillary services to you which we believe may help you with your property transaction. We wish to make you aware, that should you decide to use these services we will receive a referral fee. For full and detailed information please visit 'terms and conditions' on our website www.keithashton.co.uk

Brentwood
Tel. 01277 260858

Village Office
Tel. 01277 375757

Lettings Office
Tel. 01277 202200

Explore more @ www.keithashton.co.uk

