

Temple Fortune Lane, NW11

£2,275 Per calendar month

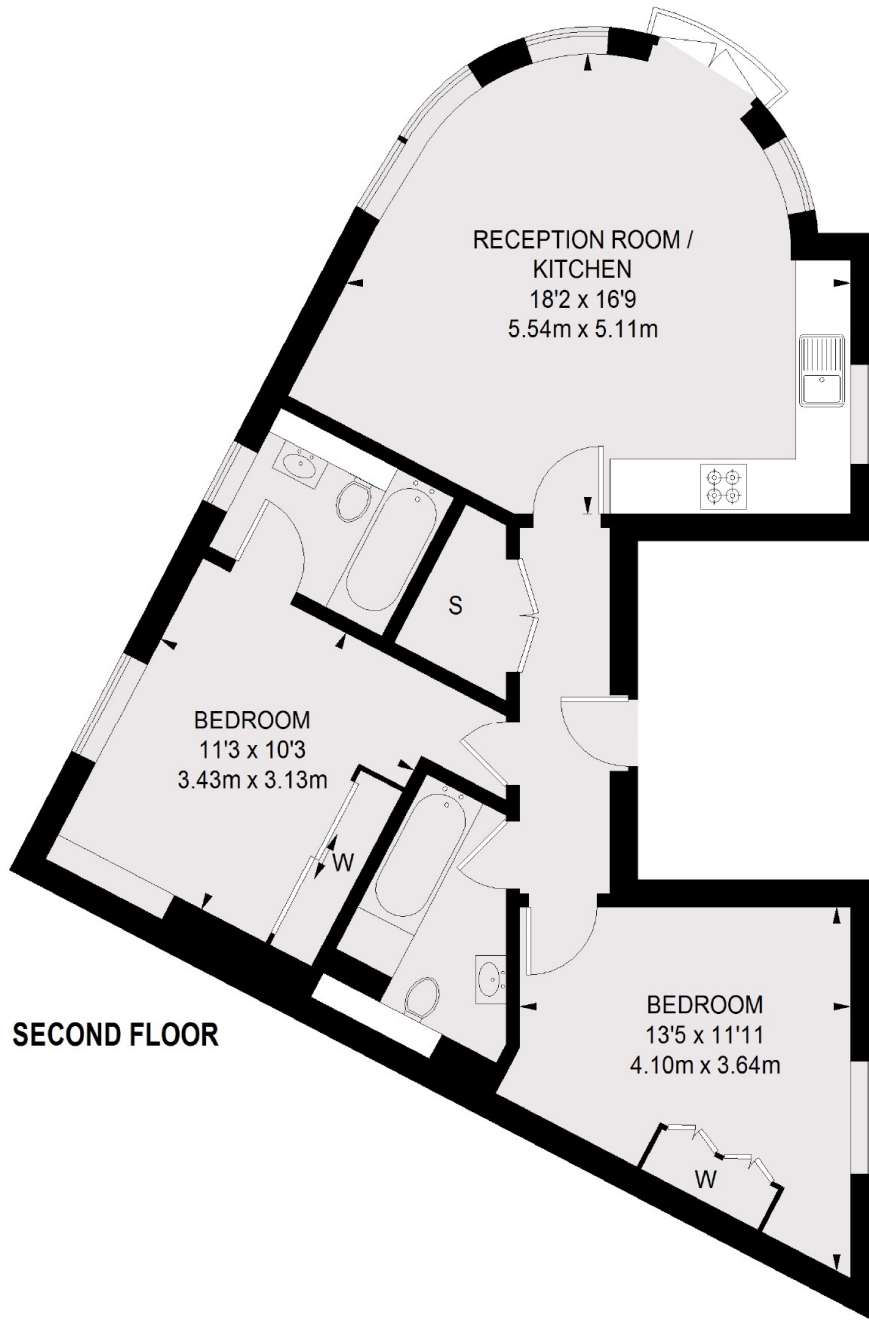
A modern two double bedroom apartment with two bathrooms on the second floor of this period conversion. The property has a large open plan reception room, fitted storage in both bedrooms, master with en-suite and wooden flooring throughout.

Set amongst the shops and restaurants of Temple Fortune and under half a mile to Golders Green tube. Marks & Spencers is conveniently located across the road.

Features

- Two Bedrooms
- Bright Reception
- Open Plan Kitchen
- Newly Built
- Second Floor
- Great Location

Temple Fortune Lane,
London, NW11



TOTAL APPROX. FLOOR AREA
698 SQ. FT. (64.81 SQ. M.)