



## Stamford Street, SE1

£675,000

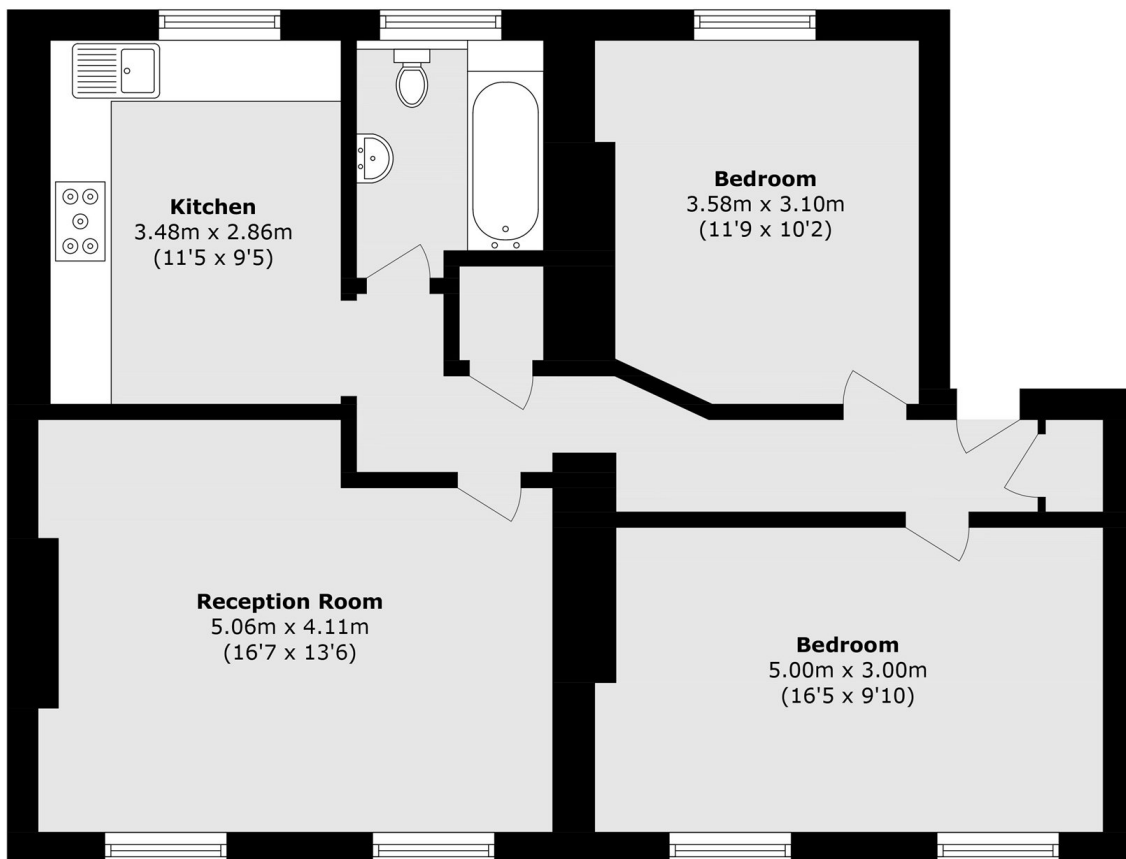
A rarely available Georgian conversion offering a spacious living room, a modern kitchen-diner, two double bedrooms and a three-piece family bathroom. Featuring sash windows, attractive views on both sides, access to a mature communal garden and a Share of the Freehold.

Ideally located opposite Bernie Spain Gardens and moments from the River Thames, the property is within easy reach of the Tate Modern, National Theatre, Shakespeare's Globe and Borough Market. The City and West End are easily accessible, with excellent transport links via Waterloo Station, Blackfriars Station and Southwark Station.

### Features

Georgian Conversion  
Modern Kitchen-Diner  
Large Living Room  
Two Double Bedrooms  
Attractive Views  
Chain Free Sale

Stamford Street,  
London, SE1



Total area (approx.): 74.8 sq. m (805.1 sq. ft)