

9 Khartoum Street, Old Trafford, Trafford, M16 9WE



JP&Brimelow
ESTATE AGENTS



4 1 2

VIDEO TOUR AVAILABLE An extended and stylishly presented, FOUR BEDROOM, mid terrace property. This delightful period home is located on a highly desirable residential road here in Old Trafford, off Darnley Street.

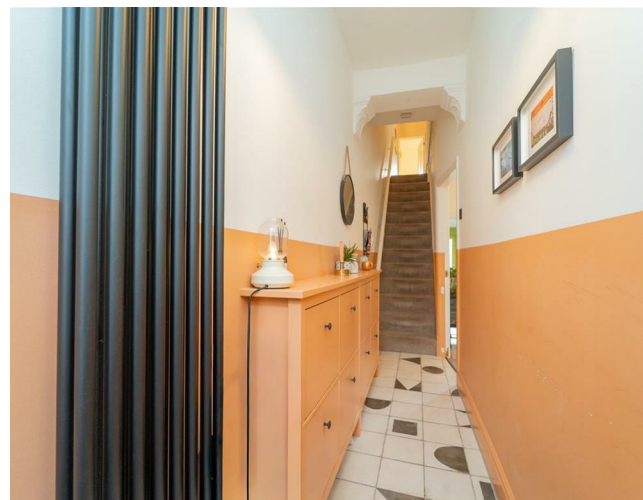
Within easy walking distance of all local amenities, parks, Seymour Park Primary School, and transport links into the city centre/Media City with the Metrolink station on Seymour Grove.

In brief this charming property consists of; a welcoming entrance hall, a beautifully presented lounge to the front aspect benefitting from a box bay window, and a period feature fireplace, leading through to a dining room which has view and access out into the rear enclosed SOUTH facing garden.

A modern fully fitted kitchen completed this floor. To the first floor there a two well proportioned double bedrooms, an additional bedroom, and a white three-piece bathroom suite. Stairs leading to the second floor reveal the principal bedroom which benefits from useful eaves storage completing this fabulous home.


The property benefits from gas fired central heating, high ceilings, period features, and a rear enclosed garden.

£350,000





EPC Chart

Energy Efficiency Rating		
	Current	Potential
Very energy efficient - lower running costs		
(92 plus) A		
(81-91) B		
(69-80) C		
(55-68) D		
(39-54) E		
(21-38) F		
(1-20) G		
Not energy efficient - higher running costs		
England & Wales	EU Directive 2002/91/EC 	



Tenure: Leasehold Council Tax Band: A

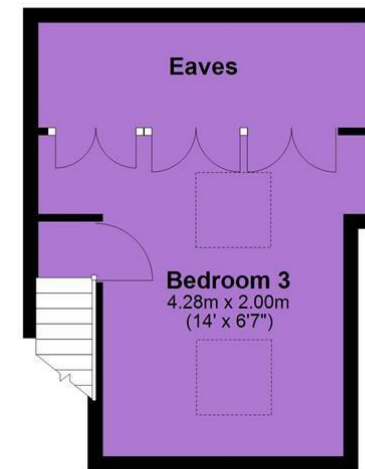
Ground Floor



First Floor



Second Floor



JP & Brimelow Estate Agents Ltd
430 Barlow Moor Road, Manchester, M21 8AD
Tel: 0161 8822233

E: sales@jpbrimelow.co.uk www.jpandbrimelow.co.uk



JP & Brimelow
ESTATE AGENTS

NOTICE: JP & Brimelow Estate Agents Ltd for themselves and for the vendors or lessors of this property whose agents they are give notice that:

- (i) the particulars are set out as a general outline only for the guidance of intending purchasers or lessees, and do not constitute, nor constitute part of, an offer or contract;
- (ii) all descriptions, dimensions, references to the condition and necessary permissions for use and occupation, and other details are given in good faith and are believed to be correct but any intending purchasers or tenants should not rely on them as statements or representations of fact but must satisfy themselves by inspection or otherwise as to the correctness of each of them;
- (iii) no person in the employment of JP & Brimelow Estate Agents Ltd has any authority to make or give any representation or warranty whatever in relation to this property.

jpandbrimelowstateagents

@jpandbrimelow

