



PCM

£2,950 PCM

Folgate Street

London, E1 6UP

An unmissable 2 double bedroom Spitalfields apartment.

This amazing 2 double bedroom apartment is perfect for anyone that needs to be close to work but also close to the fun stuff too! With Spitalfields market calling to you from the window to sample some of its culinary delights or to explore the boutiques and or market stalls!

This semi open plan living room is spacious and light, the kitchen is modern and has ample room to create, the master has an en-suite shower room and the second double bedroom has use of the family bathroom. There is plenty of build in storage, there are wood floors throughout and it comes fully furnished.

It offers 24 hr concierge, gym and business amenities. Aldgate is a 5 minutes walk as is the City and Liverpool Street, Shoreditch with all its nightlife is a short walk up the road but everything you could possibly need is on your doorstep in Spitalfields Market.

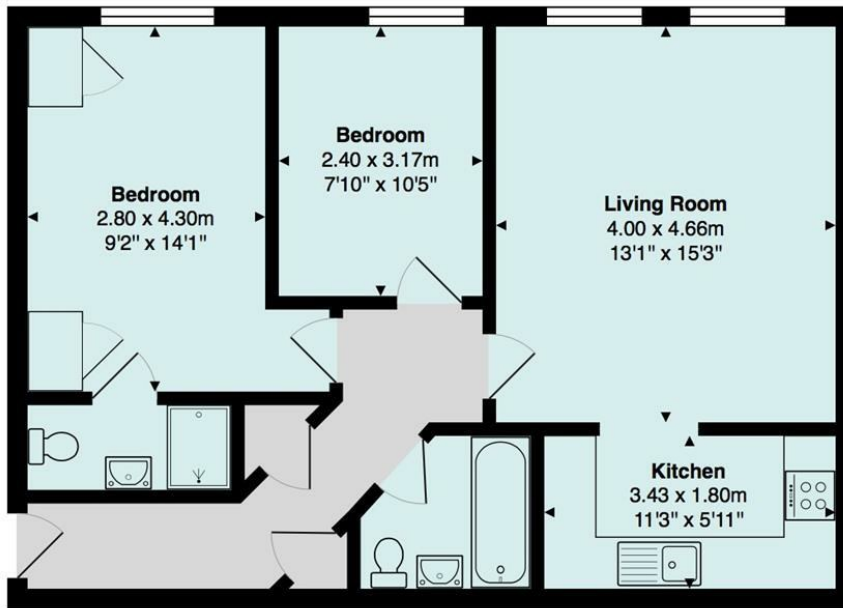
Available beginning of July and comes furnished, don't delay and book your viewing before it get snapped up!

5 weeks deposit: £3403

Council tax:Band F

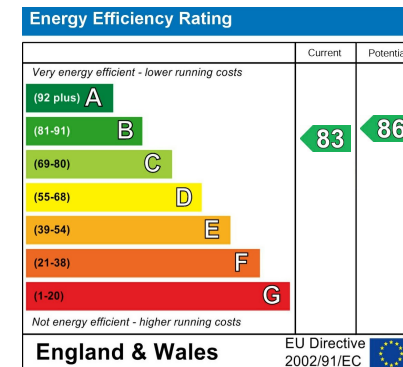






Total Area: 63.0 m² ... 678 ft²

All measurements are approximate and for display purposes only



Agents Note: Whilst every care has been taken to prepare these particulars, they are for guidance purposes only. All measurements are approximate and are for general guidance purposes only and whilst every care has been taken to ensure their accuracy, they should not be relied upon and potential buyers/tenants are advised to recheck the measurements

OFFICE ADDRESS
88 Cheshire Street
London
E2 6EH

OFFICE DETAILS
0207 739 6969
info@peachproperties.com
www.peachproperties.com