

CHISWICK HIGH ROAD, W4

£595,000

Leasehold



1



1



0



PROPERTY FEATURES

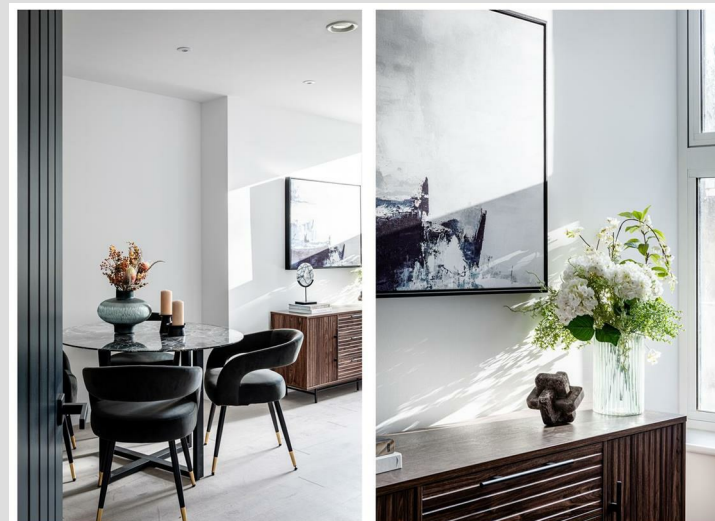
- Central Location
- Modern Building & Specifications
- Chain Free New Build
- Stamp Duty Incentives Available
- EPC Rating - B
- Great Transport Connections

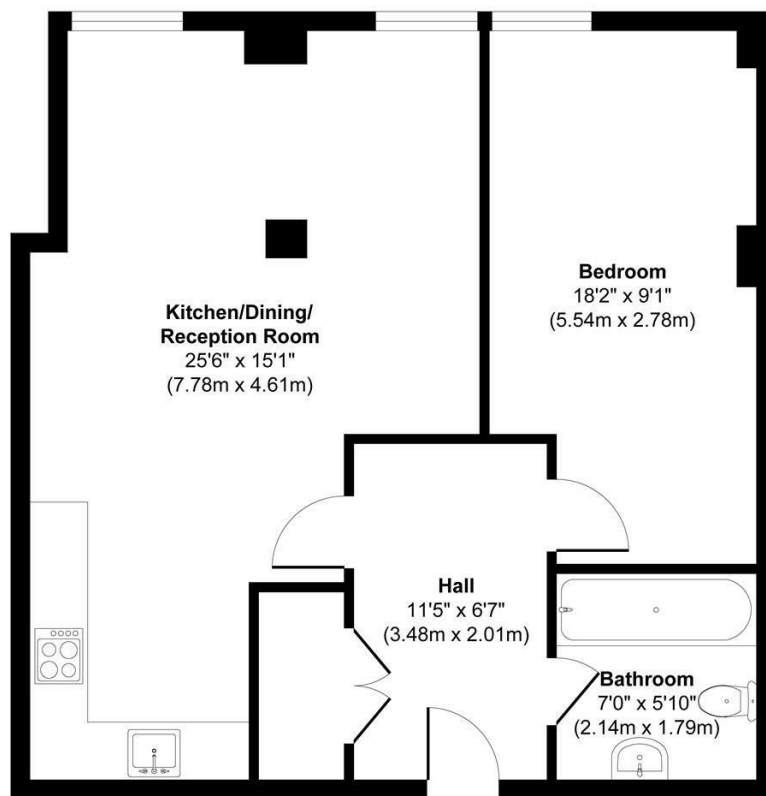


PROPERTY FEATURES

An exciting prospect to modern living, this New York style apartment enjoys modern specifications throughout within an attractive modern building. The property is located very conveniently where amenities, transport, green spaces and entertainment are all on your doorstep.

ALEXANDER STEER
Estate Agents



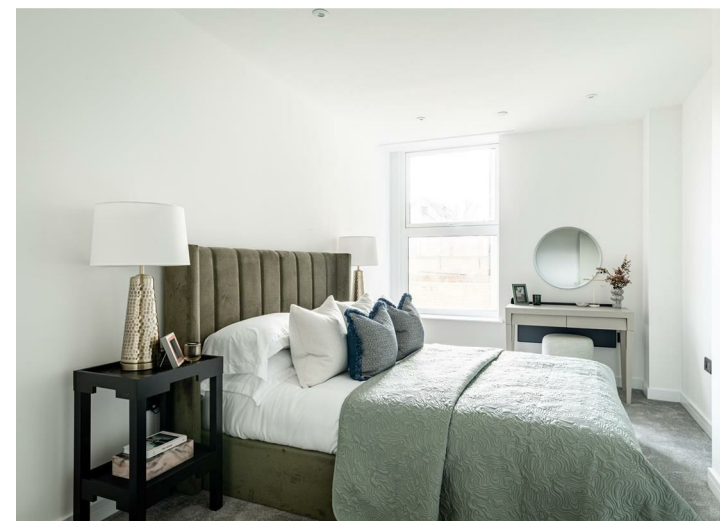


Ground Floor

Approx. Gross Internal Floor Area 623 sq. ft / 57.92 sq. m

Illustration for identification purposes only, measurements are approximate, not to scale.

Produced by Elements Property



@ALEXANDERSTEERPROPERTY

ALEXANDER
STEER

0203 822 0111

hello@alexandersteer.co.uk

158a Shepherds Bush Road, Hammersmith, London,
W6 7PB

All sizes are approximate. The Agent has not tested any apparatus, equipment, fixtures and fittings, or services and so cannot verify that they are in working order or fit for the purpose. A buyer is advised to obtain verification from their Solicitors or Surveyor. Photographs are for illustration purposes only and may depict items, which are not for sale or included in the sale price. References to tenure of a property are based upon Information supplied by the vendor. The agent has not had sight of the title documents, a buyer is advised to obtain verification from their solicitor.

Money Laundering Regulations 2003: Intending purchasers will be asked to produce identification, documentation at a later stage and we would ask for your co-operation in order that there will be no delay in agreeing the sale. These particulars are intended to give a fair description of the property only and are in no way guaranteed, nor do of any contract. They are issued on the express condition that all negotiations are conducted through Alexander Steer Estate Agents. All subject to contract and to being unsold.